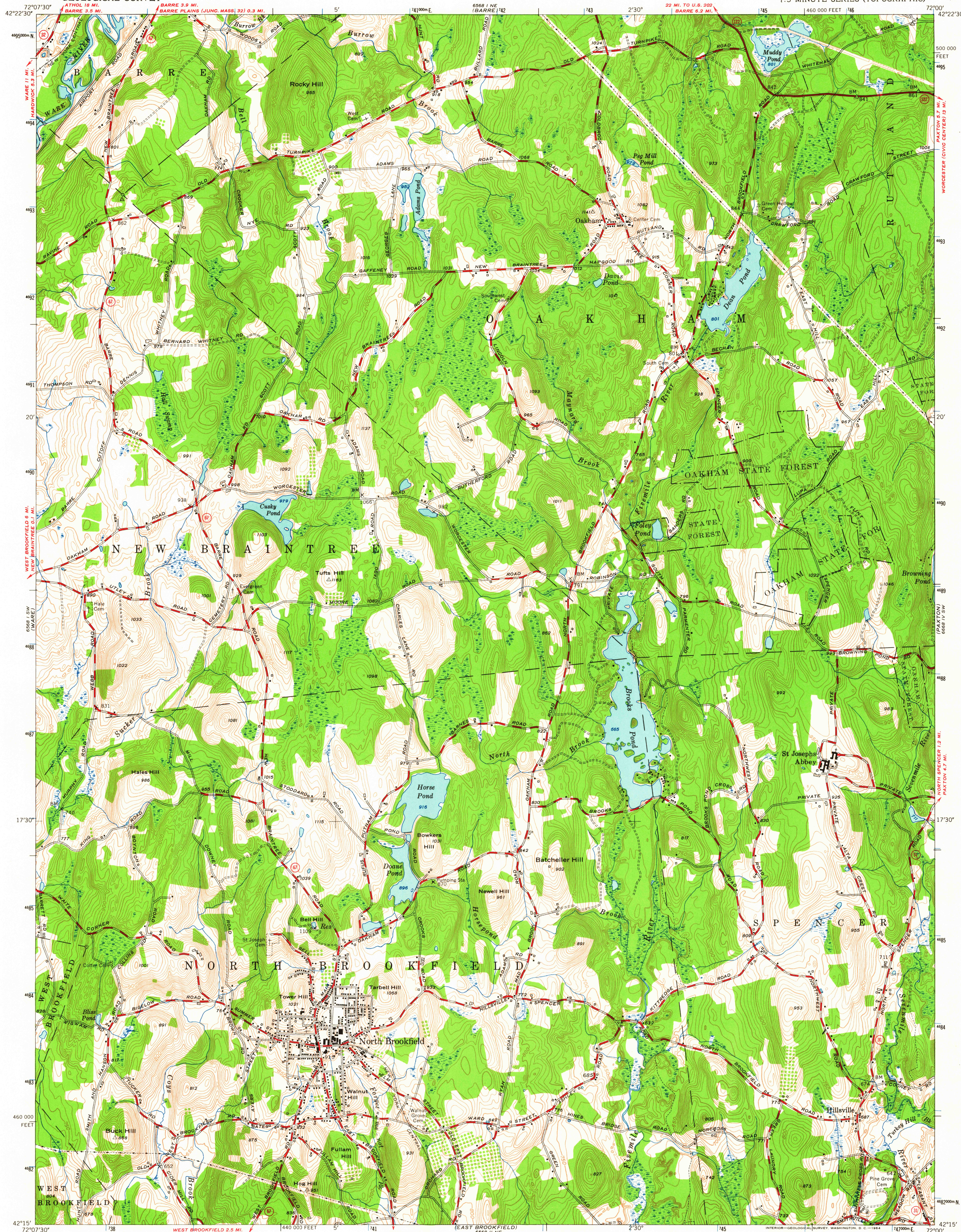
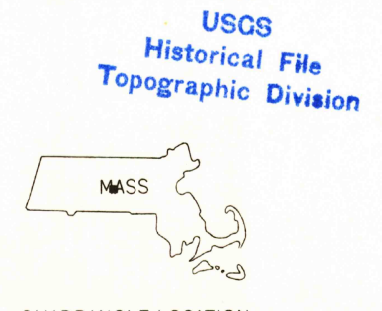
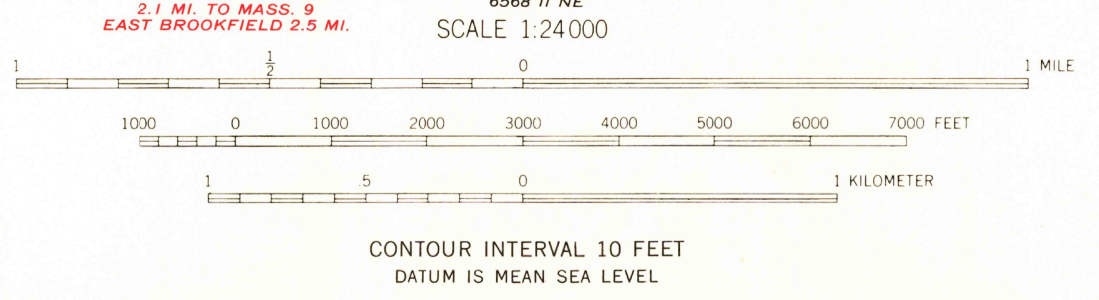
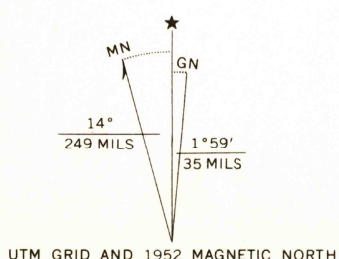


UNITED STATES
DEPARTMENT OF THE INTERIOR
GEOLOGICAL SURVEY

NORTH BROOKFIELD QUADRANGLE
MASSACHUSETTS—WORCESTER CO.
7.5 MINUTE SERIES (TOPOGRAPHIC)



Mapped, edited, and published by the Geological Survey
Control by USGS, USC&GS, and Mass. Geodetic Survey
Culture and drainage in part compiled from aerial photographs
Topography by plane-table surveys 1943. Revised 1952
Polyconic projection, 1927 North American datum
10,000-foot grid based on Massachusetts (Mainland)
coordinate system
1000-meter Universal Transverse Mercator grid ticks,
zone 18 shown in blue



ROAD CLASSIFICATION

Heavy-duty	Light-duty
Medium-duty	Unimproved dirt
State Route	

NORTH BROOKFIELD, MASS.
N4215-W7200/7.5
1952
AMS 6568 I SE—SERIES V814

THIS MAP COMPLIES WITH NATIONAL MAP ACCURACY STANDARDS
FOR SALE BY U. S. GEOLOGICAL SURVEY, WASHINGTON 25, D. C.
A FOLDER DESCRIBING TOPOGRAPHIC MAPS AND SYMBOLS IS AVAILABLE ON REQUEST

JAN 28 1964