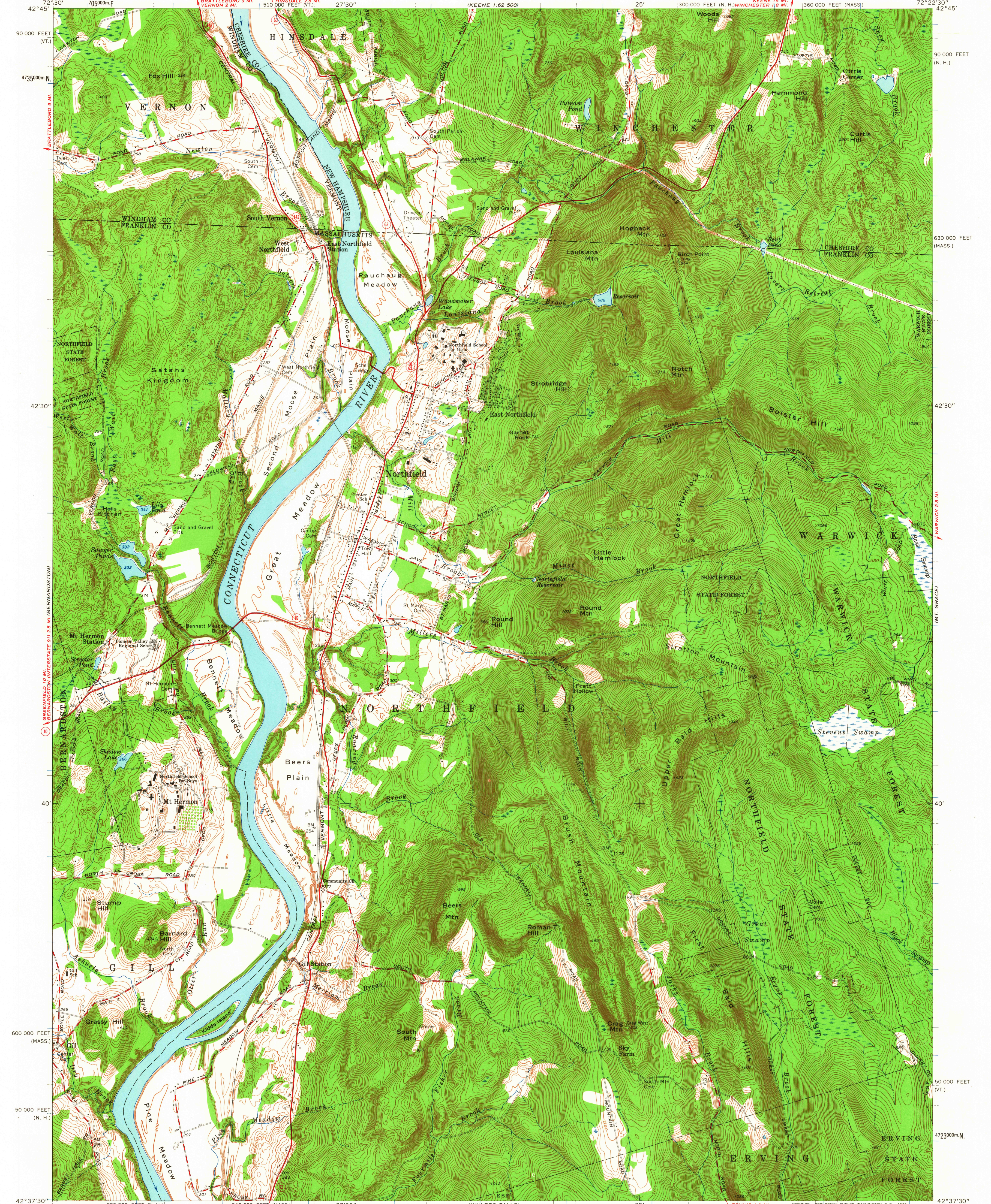


BRATTLEBORO 9 MI.
VERNON 2 MI.

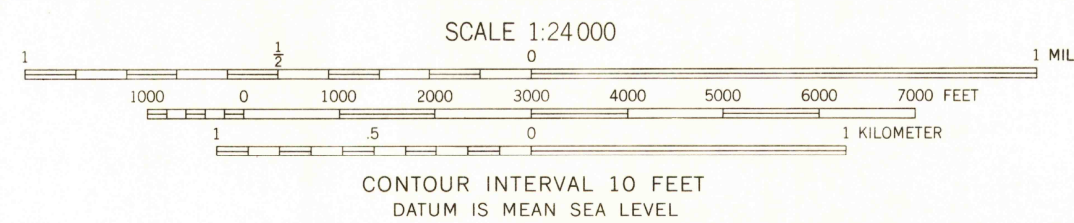
HINSDALE 2.8 MI.
WINCHESTER 1.8 MI.

KEENE 15 MI.
WINCHESTER 1.8 MI.

KEENE 1.62 500



Mapped, edited, and published by the Geological Survey
Control by USGS, USC&GS, and Massachusetts Geodetic Survey
Topography by plane-table surveys 1936 and 1944. Revised 1961
Polyconic projection. 1927 North American datum
10,000-foot grids based on Massachusetts, mainland zone,
New Hampshire, and Vermont coordinate systems
1000-meter Universal Transverse Mercator grid ticks,
zone 18, shown in blue

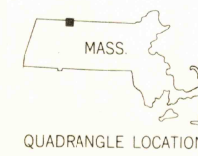


CONTOUR INTERVAL 10 FEET
DATUM IS MEAN SEA LEVEL

USGS
Historical File
Topographic Division

ROAD CLASSIFICATION

- Heavy-duty ——— Light-duty ———
- Medium-duty - - - - - Unimproved dirt - - - - -
- State Route



NORTHFIELD, MASS.—N. H.—VT.
N4237.5—W7222.5/7.5

1961

THIS MAP COMPLIES WITH NATIONAL MAP ACCURACY STANDARDS
FOR SALE BY U. S. GEOLOGICAL SURVEY, WASHINGTON 25, D. C.
A FOLDER DESCRIBING TOPOGRAPHIC MAPS AND SYMBOLS IS AVAILABLE ON REQUEST

SEP - 6 1963

4460
U.S.G.S.
COPY
TOPOGRAPHIC DIVISION