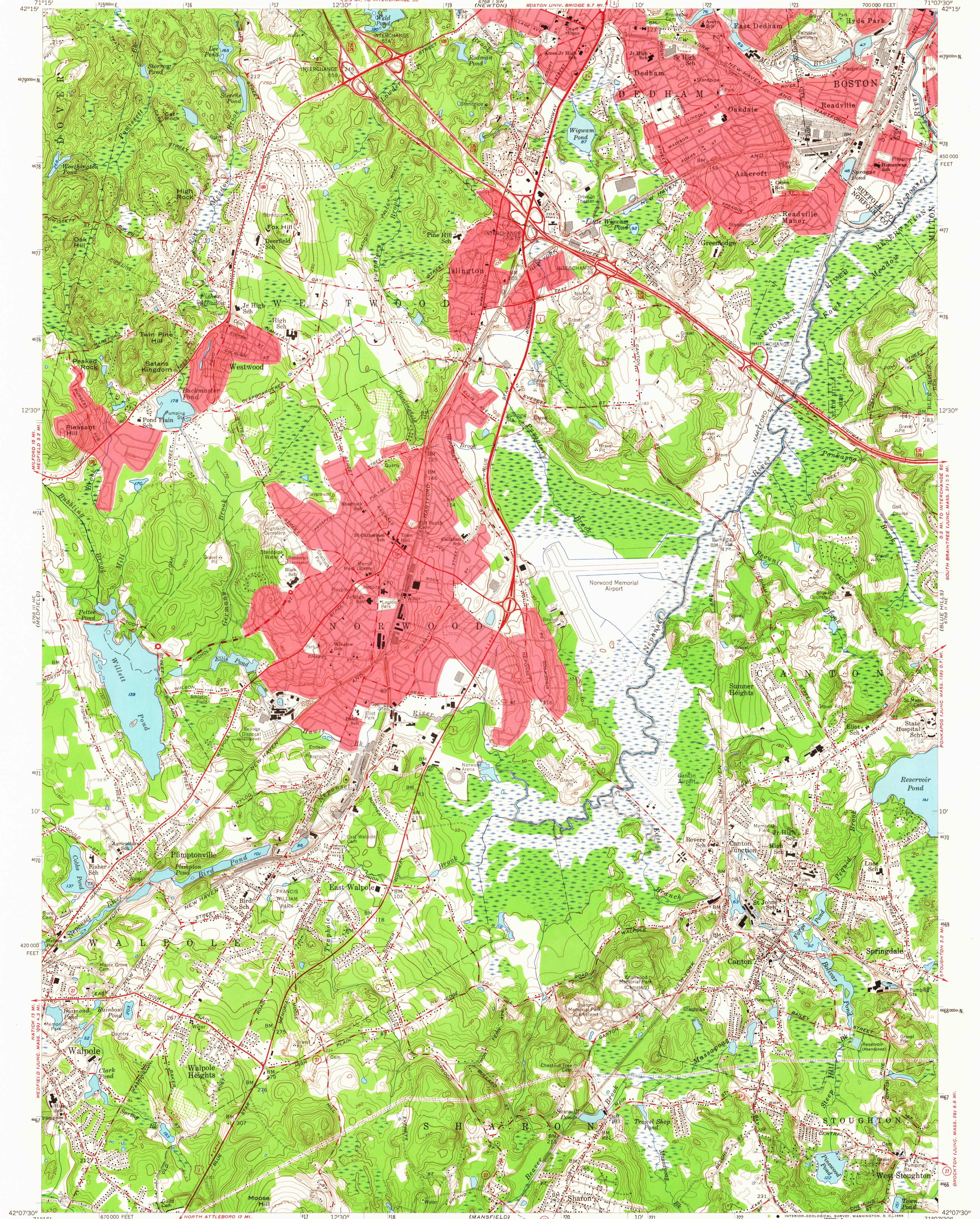


688 SE
BOSTON SOUTH

688 SE
BOSTON SOUTH

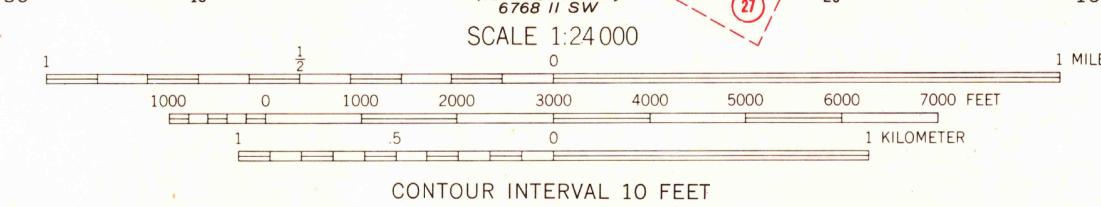
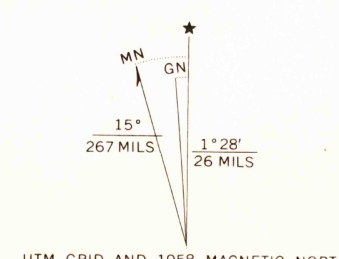


Mapped, edited, and published by the Geological Survey

Control by USGS, USCGS, Massachusetts Harbor and Land Commission, and Massachusetts Geodetic Survey

Topography by planetable surveys 1936. Culture revised by photogrammetric methods from aerial photographs taken 1957. Field check 1958.

Polyconic projection. 1927 North American datum. 10,000-foot grid based on Massachusetts coordinate system, mainland zone. 1000-meter Universal Transverse Mercator grid ticks, zone 19, shown in blue. Red tint indicates areas in which only landmark buildings are shown.



USGS
Historical File
Topographic Division

ROAD CLASSIFICATION
Heavy-duty ——— Light-duty ———
Medium-duty ——— Unimproved dirt ———
U.S. Route ——— State Route ———



U.S.G.S.
FILE COPY
TOPOGRAPHIC DIVISION

NORWOOD, MASS.
N4207.5-W7107.5/7.5

1958

AMS 6767 II NW-SERIES V814

THIS MAP COMPLIES WITH NATIONAL MAP ACCURACY STANDARDS
FOR SALE BY U.S. GEOLOGICAL SURVEY, WASHINGTON, D.C. 20242
A FOLDER DESCRIBING TOPOGRAPHIC MAPS AND SYMBOLS IS AVAILABLE ON REQUEST

6805
DEC 1-1965