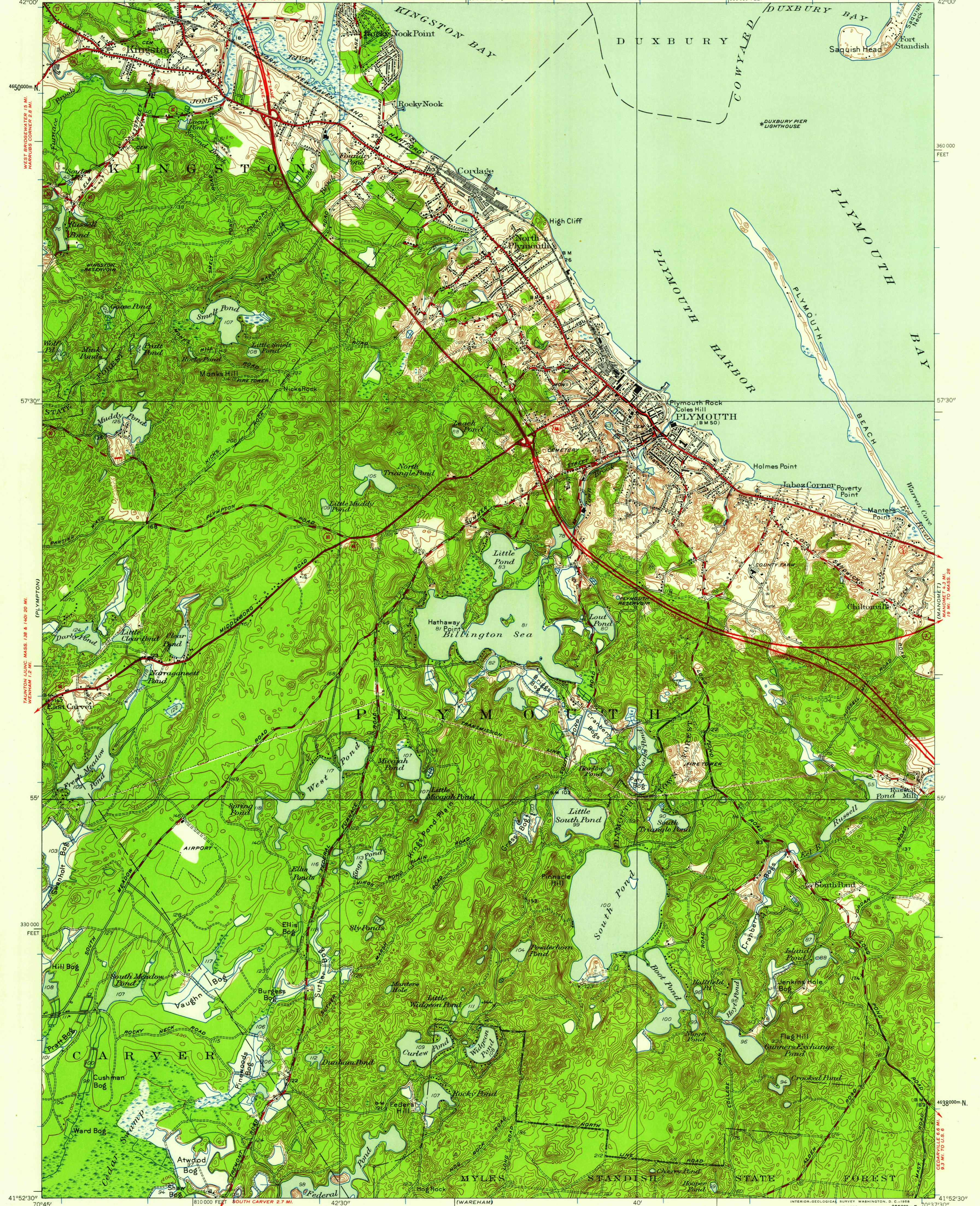


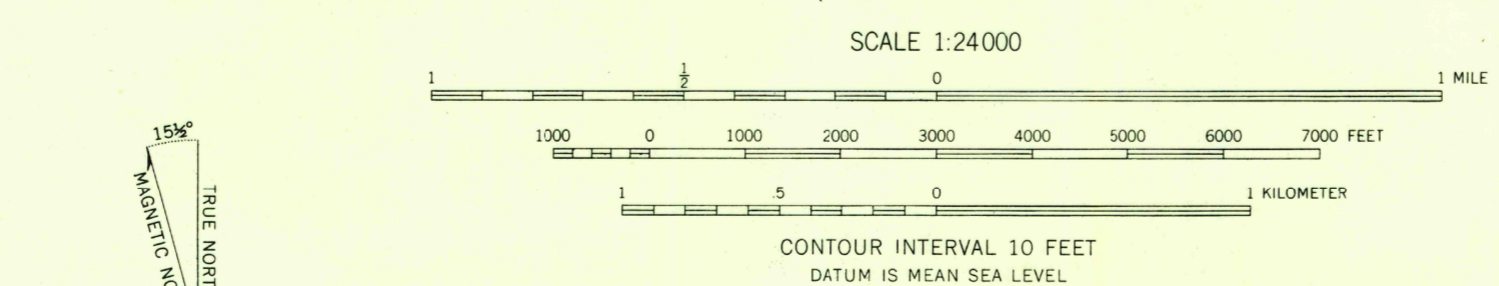
WHITMAN 13 MI.
BRYANTVILLE 6.2 MI.
MARSHFIELD LUJAC, MASS. 1391 7.8 MI.
BAILEYS CORNER 2.7 MI.
UNITED STATES
DEPARTMENT OF THE INTERIOR
GEOLOGICAL SURVEY

STATE OF MASSACHUSETTS
DEPARTMENT OF PUBLIC WORKS

PLYMOUTH QUADRANGLE
MASSACHUSETTS—PLYMOUTH CO.
7.5 MINUTE SERIES (TOPOGRAPHIC)



Maped, edited, and published by the Geological Survey
Control by USGS, USC&GS, and Massachusetts Geodetic Survey
Topography by planetable surveys 1934. Revised 1950
Polyconic projection. 1927 North American datum
10,000-foot grid based on Massachusetts (Mainland)
coordinate system
1000-meter Universal Transverse Mercator grid ticks,
zone 19, shown in blue



USGS
Historical File
Topographic Division

ROAD CLASSIFICATION
Heavy-duty ——— Light-duty ———
Medium-duty ——— Unimproved dirt - - - - -
U. S. Route (red square) State Route (red circle)

U.S.G.S.
FILE COPY
TOPOGRAPHIC DIVISION

PLYMOUTH, MASS.
N4152.5-W7037.5/7.5
1950

THIS MAP COMPLIES WITH NATIONAL MAP ACCURACY STANDARDS
FOR SALE BY U. S. GEOLOGICAL SURVEY, WASHINGTON 25, D. C.
A FOLDER DESCRIBING TOPOGRAPHIC MAPS AND SYMBOLS IS AVAILABLE ON REQUEST

JUN 10 1958
JUN 10 1958
2-335