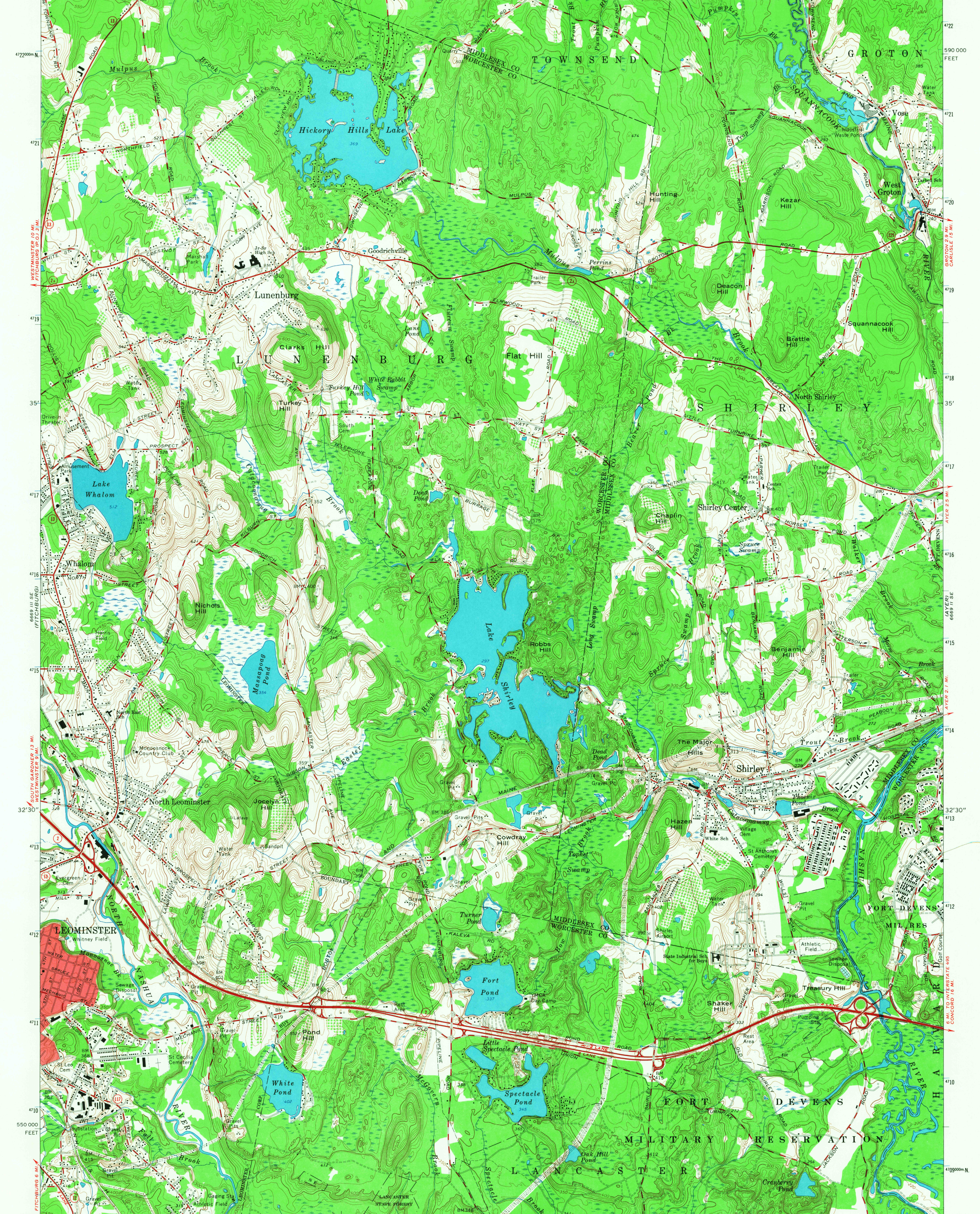
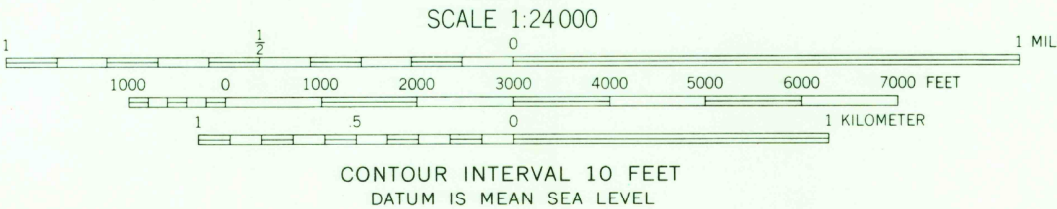
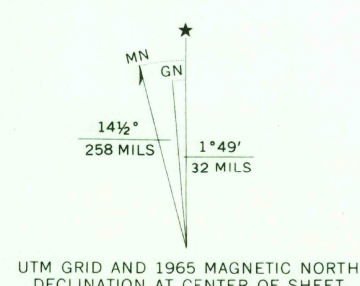


71°45' 42°37'30" 275000 E 6669 11 NW (TOWNSEND) 1780 1781 40' 1782 560 000 FEET 1783 1.6 MI. TO MASS. 119 1784 71°37'30" 42°37'30"

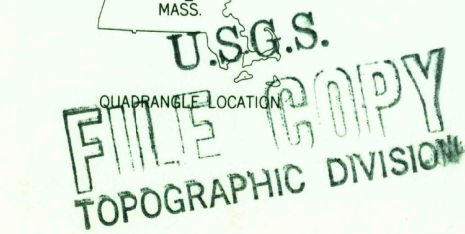


Mapped, edited, and published by the Geological Survey  
Control by USGS, USC&GS, and Massachusetts Geodetic Survey  
Topography by planetable surveys 1923 and 1935. Revised 1965  
Polyconic projection. 1927 North American datum  
10,000-foot grid based on Massachusetts coordinate system,  
mainland zone  
1000-meter Universal Transverse Mercator grid ticks,  
zone 19, shown in blue  
Red tint indicates area in which only landmark buildings are shown



USGS  
Historical File  
Topographic Division

ROAD CLASSIFICATION	
Heavy-duty	Light-duty
Medium-duty	Unimproved dirt
○ State Route	



SHIRLEY, MASS.  
N4230-W7137.5/7.5  
1965

AMS 6669 11 SW-SERIES V814

4750  
MAY 24 1968  
Rev