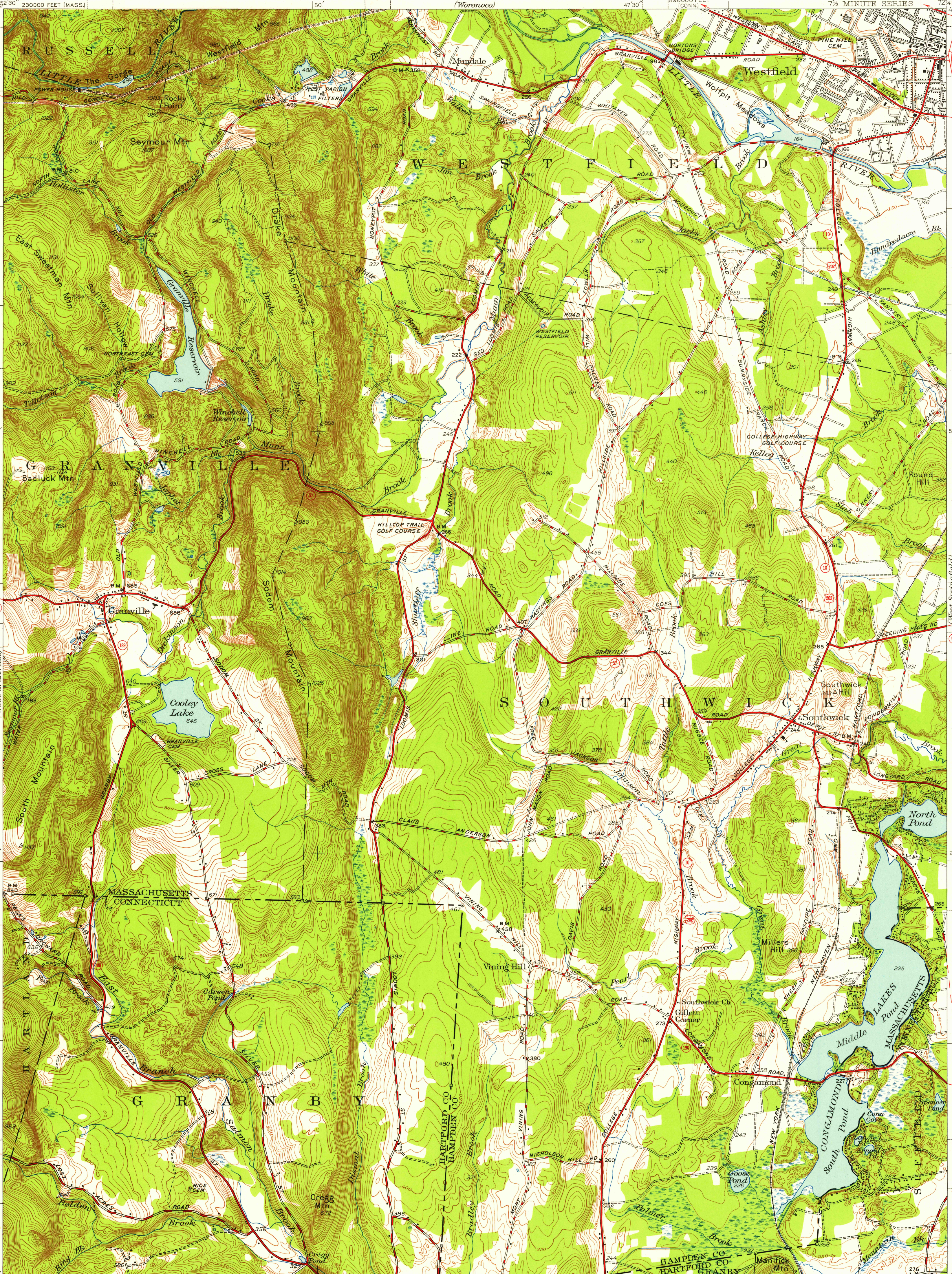


UNITED STATES
DEPARTMENT OF THE INTERIOR
GEOLOGICAL SURVEY

UNITED STATES
DEPARTMENT OF THE ARMY
CORPS OF ENGINEERS

STATE OF MASSACHUSETTS
REPRESENTED BY THE
DEPARTMENT OF PUBLIC WORKS

MASSACHUSETTS-CONNECTICUT
SOUTHWICK QUADRANGLE
7 1/2 MINUTE SERIES



Mapped by the Geological Survey
1937 and 1944
Massachusetts part revised, 1945

Scale 1:24000
CONTOUR INTERVAL 10 FEET
DATUM IS MEAN SEA LEVEL

USGS
Historical File
Topographic Division

U.S.G.S.
FILE COPY
TOPOGRAPHIC DIVISION

SOUTHWICK, MASS.-CONN.
Edition of 1947
N4200-W7245/7.5

Polyconic projection, 1927 North American datum
5000 yard grid based on U.S. zone system A
10000 foot grids based on Massachusetts (Main) and
Connecticut rectangular coordinate systems

MASSACHUSETTS-CONNECTICUT
SOUTHWICK QUADRANGLE
7 1/2 MINUTE SERIES

U.S.G.S.
FILE COPY
TOPOGRAPHIC DIVISION

U.S.G.S.
FILE COPY
TOPOGRAPHIC DIVISION