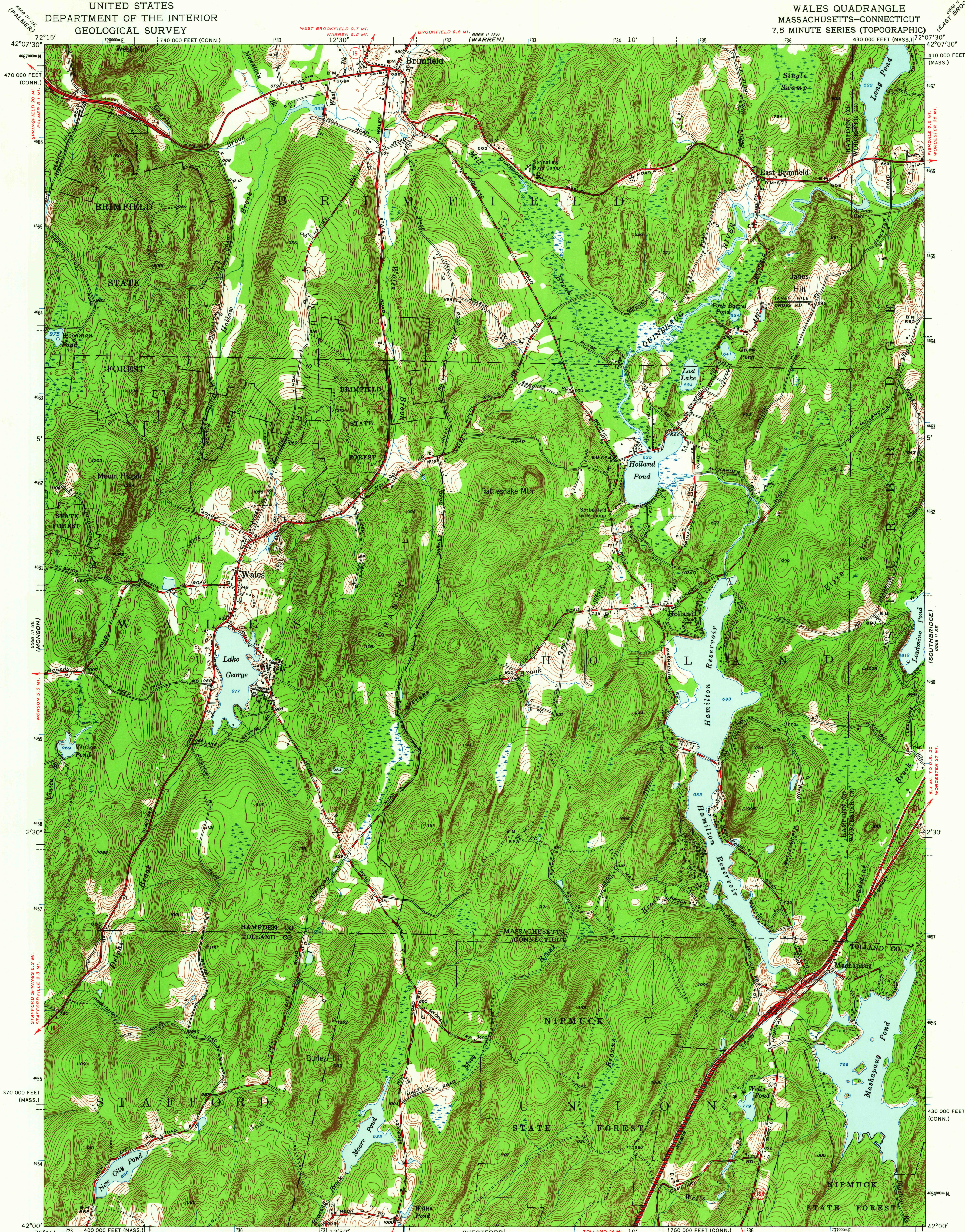
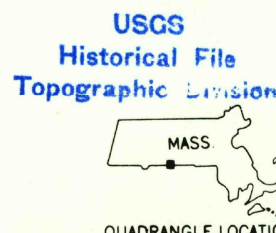
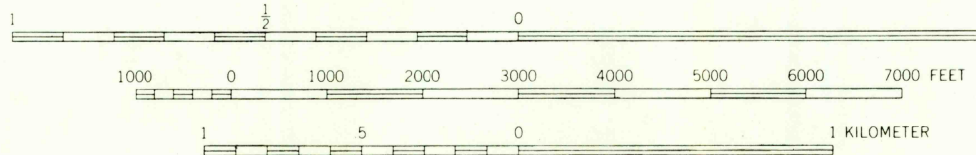
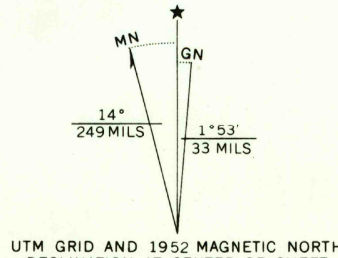


UNITED STATES
DEPARTMENT OF THE INTERIOR
GEOLOGICAL SURVEY

WALES QUADRANGLE
MASSACHUSETTS-CONNECTICUT
7.5 MINUTE SERIES (TOPOGRAPHIC)



Mapped, edited, and published by the Geological Survey
Control by USGS, and Massachusetts Geodetic Survey
Topography by plane-table surveys 1942-1943. Revised 1952
Polyconic projection. 1927 North American datum
10,000-foot grids based on Massachusetts (Mainland) and
Connecticut coordinate systems
1000-meter Universal Transverse Mercator grid ticks,
zone 18, shown in blue



ROAD CLASSIFICATION		
Heavy-duty	1 LANE, 6 LANE	Light-duty
Medium-duty	4 LANE, 6 LANE	Unimproved dirt
U. S. Route		State Route

WALES, MASS.-CONN.
N4200-W7207.5/7.5

1952

AMS 5568 II SW-SERIES V814

THIS MAP COMPLIES WITH NATIONAL MAP ACCURACY STANDARDS
FOR SALE BY U.S. GEOLOGICAL SURVEY, WASHINGTON 25, D.C.
A FOLDER DESCRIBING TOPOGRAPHIC MAPS AND SYMBOLS IS AVAILABLE ON REQUEST

SEP 2 1964

3210