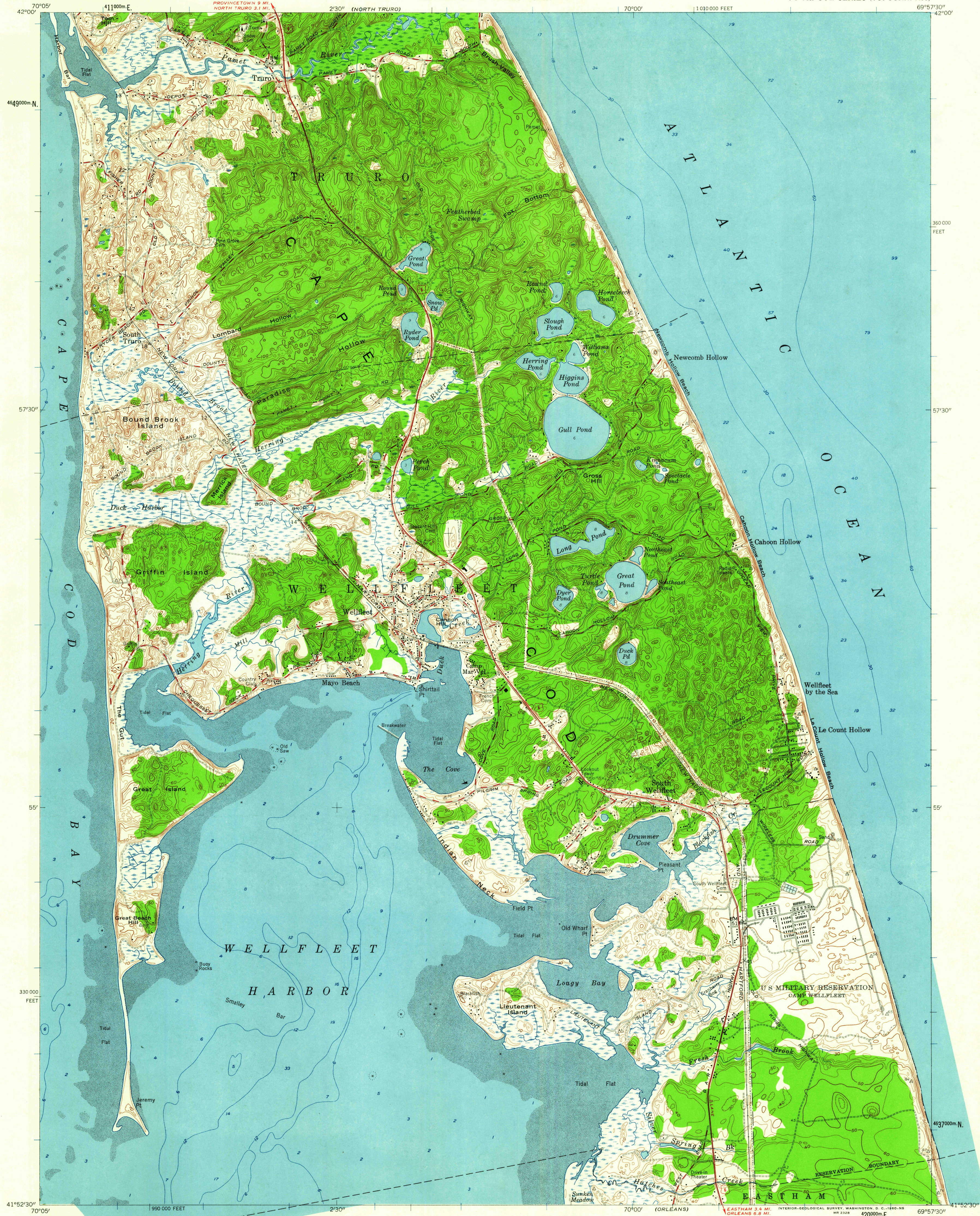


(NORTH TRURO)  
70°05'  
42°00'

UNITED STATES  
DEPARTMENT OF THE INTERIOR  
GEOLOGICAL SURVEY

STATE OF MASSACHUSETTS  
DEPARTMENT OF PUBLIC WORKS

WELLFLEET QUADRANGLE  
MASSACHUSETTS—BARNSTABLE CO.  
7.5 MINUTE SERIES (TOPOGRAPHIC)



Mapped, edited, and published by the Geological Survey  
Control by USC&GS and Massachusetts Geodetic Survey  
Culture and drainage in part compiled from aerial photographs  
taken 1938. Topography by planetable surveys 1941. Revised 1958  
Hydrography compiled from USC&GS charts 580 (1954),  
581 (1955), and 1208 (1955)  
Polyconic projection. 1927 North American datum  
10,000-foot grid based on Massachusetts coordinate system,  
mainland zone  
1000-meter Universal Transverse Mercator grid ticks,  
zone 19, shown in blue

16°  
TRUE NORTH  
MAGNETIC NORTH  
APPROXIMATE MEAN  
DECLINATION, 1958

SCALE 1:24,000  
1 000 0 1000 2000 3000 4000 5000 6000 7000 FEET  
1 KILOMETER  
CONTOUR INTERVAL 10 FEET  
DATUM IS MEAN SEA LEVEL  
DEPTH CURVES AND SOUNDINGS IN FEET—DATUM IS MEAN LOW WATER  
SHORELINE SHOWN REPRESENTS THE APPROXIMATE LINE OF MEAN HIGH WATER  
THE MEAN RANGE OF TIDE IS APPROXIMATELY 7 FEET IN ATLANTIC OCEAN  
AND 10 FEET IN WELLFLEET HARBOR  
THIS MAP COMPLIES WITH NATIONAL MAP ACCURACY STANDARDS  
FOR SALE BY U. S. GEOLOGICAL SURVEY, WASHINGTON 25, D. C.  
A FOLDER DESCRIBING TOPOGRAPHIC MAPS AND SYMBOLS IS AVAILABLE ON REQUEST

USCS  
Historical File  
Topographic Division  
QUADRANGLE LOCATION

ROAD CLASSIFICATION  
Heavy-duty ——— Light-duty ———  
Medium-duty ——— Unimproved dirt ———  
U. S. Route

WELLFLEET, MASS.  
N4152.5—W6957.5/7.5  
1958

U.S.G.S.  
FILE COPY  
TOPOGRAPHIC DIVISION

MAY 17 1960

4930