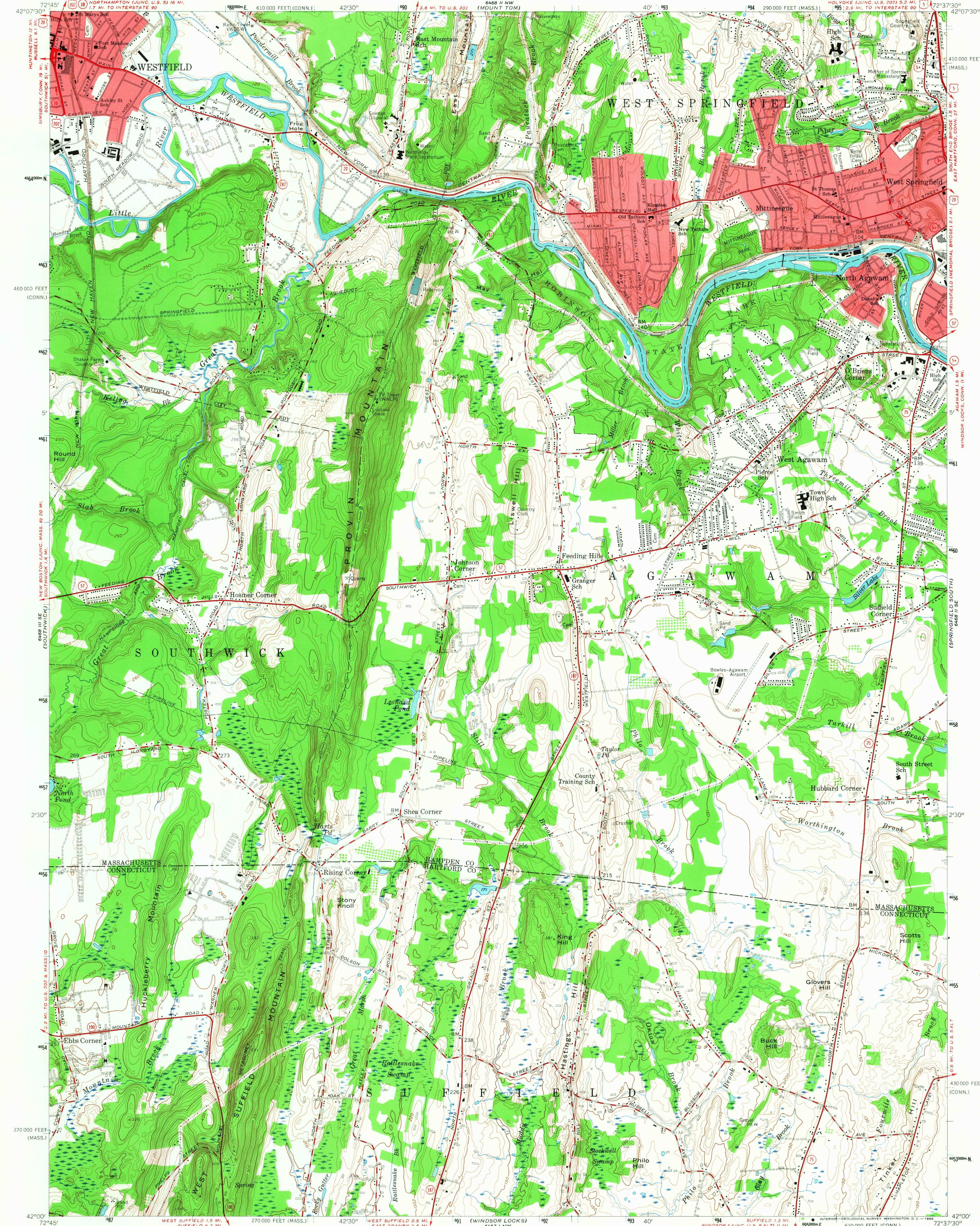


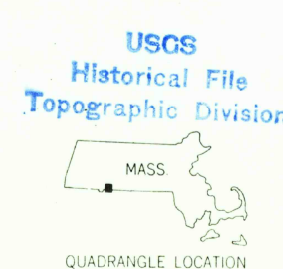
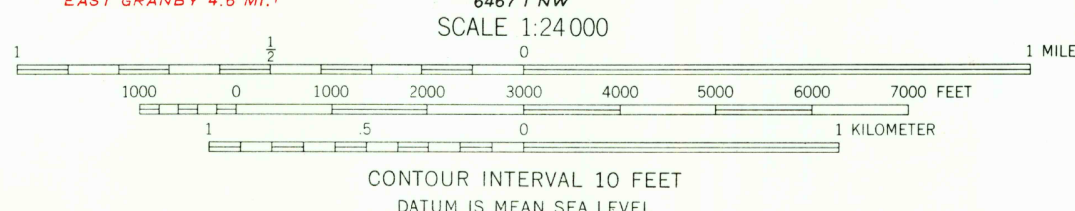
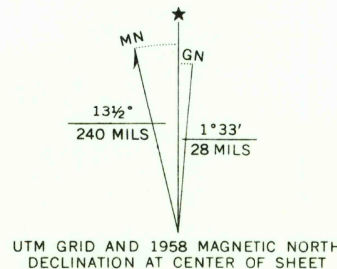
UNITED STATES
DEPARTMENT OF THE INTERIOR
GEOLOGICAL SURVEY

STATE OF MASSACHUSETTS
DEPARTMENT OF PUBLIC WORKS

WEST SPRINGFIELD QUADRANGLE
MASSACHUSETTS—CONNECTICUT
7.5 MINUTE SERIES (TOPOGRAPHIC)



Mapped, edited, and published by the Geological Survey
Control by USGS, USCGS, Massachusetts Geodetic Survey,
Massachusetts Harbor and Land Commission, and
Connecticut Geodetic Survey
Topography by plane-table surveys 1933 and 1942-1943
Culture revised from aerial photographs by photogrammetric
methods. Aerial photographs taken 1957. Field check 1958
Polyconic projection. 1927 North American datum
10,000-foot grids based on Massachusetts coordinate system,
mainland zone, and Connecticut coordinate system
1000-meter Universal Transverse Mercator grid ticks,
zone 18, shown in blue
Red tint indicates areas in which only
landmark buildings are shown



ROAD CLASSIFICATION	
Heavy-duty	Light-duty
Medium-duty	Unimproved dirt
U.S. Route	State Route

WEST SPRINGFIELD, MASS.—CONN.
N 4200—W 7237.5/7.5
1958
AMS 6468 II SW—SERIES Y814

THIS MAP COMPLIES WITH NATIONAL MAP ACCURACY STANDARDS
FOR SALE BY U.S. GEOLOGICAL SURVEY, WASHINGTON, D.C. 20242
A FOLDER DESCRIBING TOPOGRAPHIC MAPS AND SYMBOLS IS AVAILABLE ON REQUEST

U.S.G.S.
FILE COPY
TOPOGRAPHIC DIVISION

710
DEC 9 1966