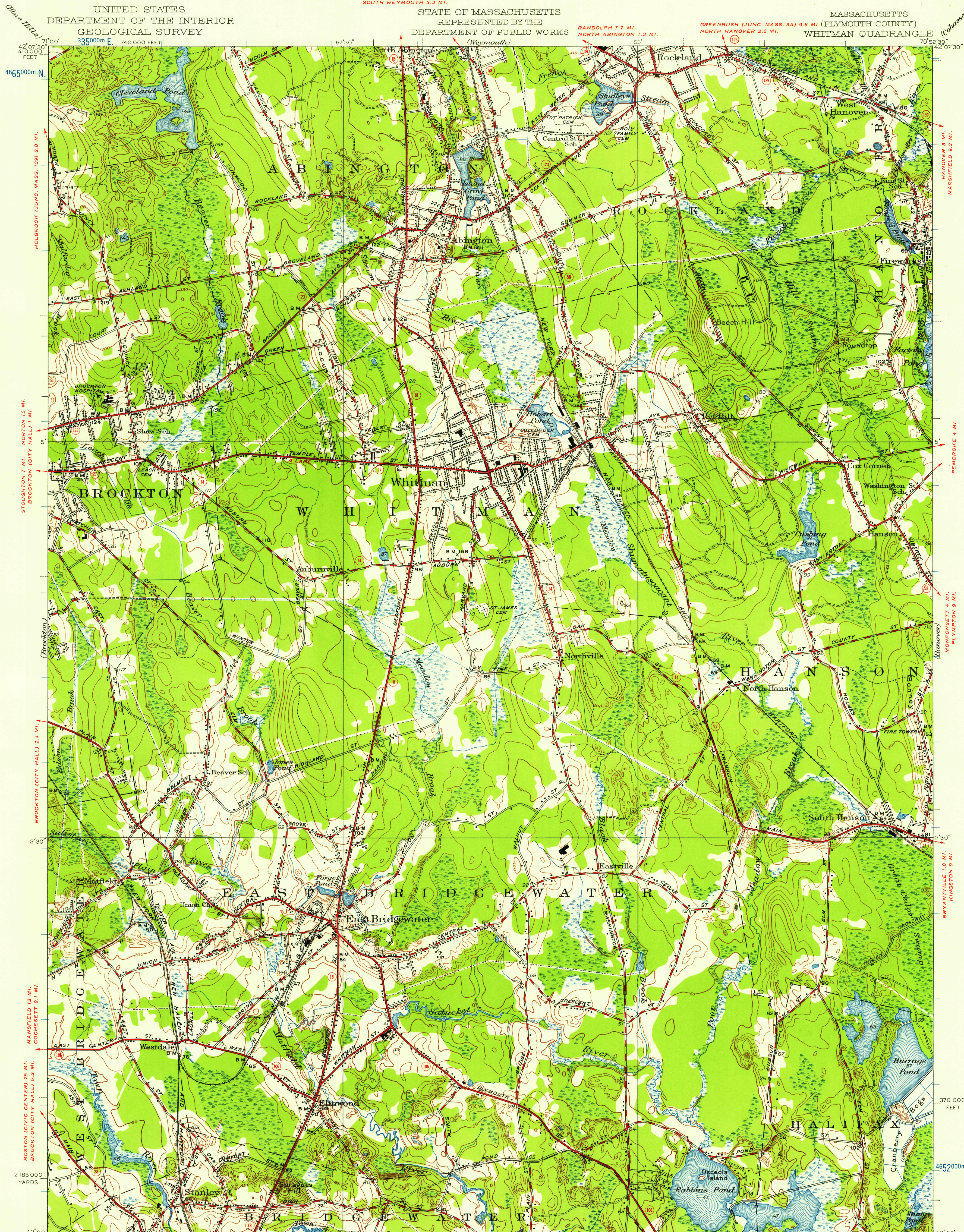


UNITED STATES  
DEPARTMENT OF THE INTERIOR  
GEOLOGICAL SURVEY

STATE OF MASSACHUSETTS  
REPRESENTED BY THE  
DEPARTMENT OF PUBLIC WORKS

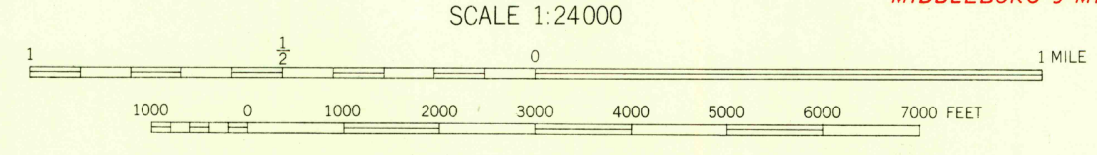
MASSACHUSETTS  
PLYMOUTH COUNTY  
WHITMAN QUADRANGLE



Topography by F.H. Sargent, Paul Blake,  
W.S. Higginson, and H.J. McMillen  
Culture and drainage in part compiled from aerial photographs  
Surveyed in 1935-1936  
Revised in 1948

ROAD CLASSIFICATION  
Heavy-duty ——— Light-duty ———  
Medium-duty - - - - - Unimproved dirt - - - - -  
U.S. Route ——— State Route ———

APPROXIMATE MEAN  
DECLINATION, 1936



CONTOUR INTERVAL 10 FEET  
DATUM IS MEAN SEA LEVEL

THIS MAP COMPLIES WITH NATIONAL MAP ACCURACY STANDARDS  
FOR SALE BY U.S. GEOLOGICAL SURVEY, WASHINGTON 25, D.C.  
A FOLDER DESCRIBING TOPOGRAPHIC MAPS AND SYMBOLS IS AVAILABLE ON REQUEST

USGS  
Historical File  
Topographic Division

Polyconic projection, 1927 North American datum  
5000 yard grid based on U.S. zone system, A  
10000 foot grid based on Massachusetts  
rectangular coordinate system  
1000-meter Universal Transverse Mercator grid ticks,  
zone 19, shown in blue

WHITMAN, MASS.  
N4200-W7052.5/75

1948

U.S.G.S.  
FILE COPY  
TOPOGRAPHIC DIVISION

U.S.G.S.  
FILE COPY  
TOPOGRAPHIC DIVISION

SEP 13 1957  
1983