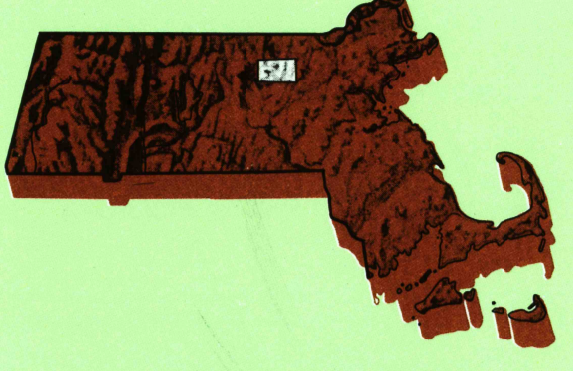


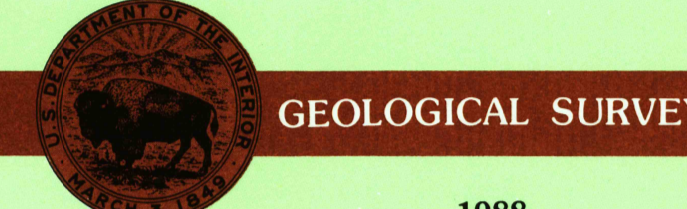
Ayer MASSACHUSETTS

1:25 000-scale metric
topographic map



7.5 X 15 MINUTE QUADRANGLE SHOWING

- Contours and elevations in meters
- Highways, roads and other manmade structures
- Water features
- Woodland areas
- Geographic names



1988

Produced by the United States Geological Survey
Control by USGS, NOS/NOAA, and Commonwealth of Massachusetts agencies

Compiled by photogrammetric methods from aerial photographs taken 1980-1981. Field checked 1981. Map added 1988
Supersedes Sheets 1965 and Ayer 1965 1:25,000-scale maps

Projection and 1000-meter grid, zone 19
Universal Transverse Mercator
10,000-foot grid ticks based on Massachusetts coordinate system, maintained zone 1927 North American Datum
To place on the predicted North American Datum 1983, move the projection lines 6 meters south and 40 meters west as shown by dashed corner ticks

There may be private inholdings within the boundaries of the National or State reservations shown on this map

CONTOUR INTERVAL 3 METERS
NATIONAL GEODETIC VERTICAL DATUM OF 1929
CONTOUR ELEVATIONS SHOWN TO THE NEAREST 0.1 METER
OTHER ELEVATIONS SHOWN TO THE NEAREST 0.5 METER

THIS MAP COMPLIES WITH NATIONAL MAP ACCURACY STANDARDS

CONVERSION TABLE		DECLINATION DIAGRAM		ADJOINING MAPS		
Meters	Feet	MAGNETIC DECLINATION		1	2	3
1	3.2808			4	5	
2	6.5617			6	7	8
3	9.8425					
4	13.1234					
5	16.4042					
6	19.6850					
7	22.9659					
8	26.2467					
9	29.5275					
10	32.8084					

To convert meters to feet multiply by 3.2808
To convert feet to meters multiply by 0.3048

UTM grid convergency (IGN) for this metric diagram (MAD) at center of map
Diagram is approximate

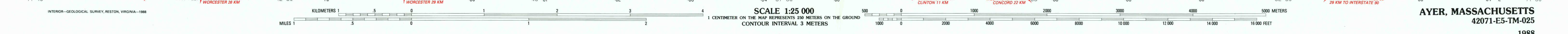
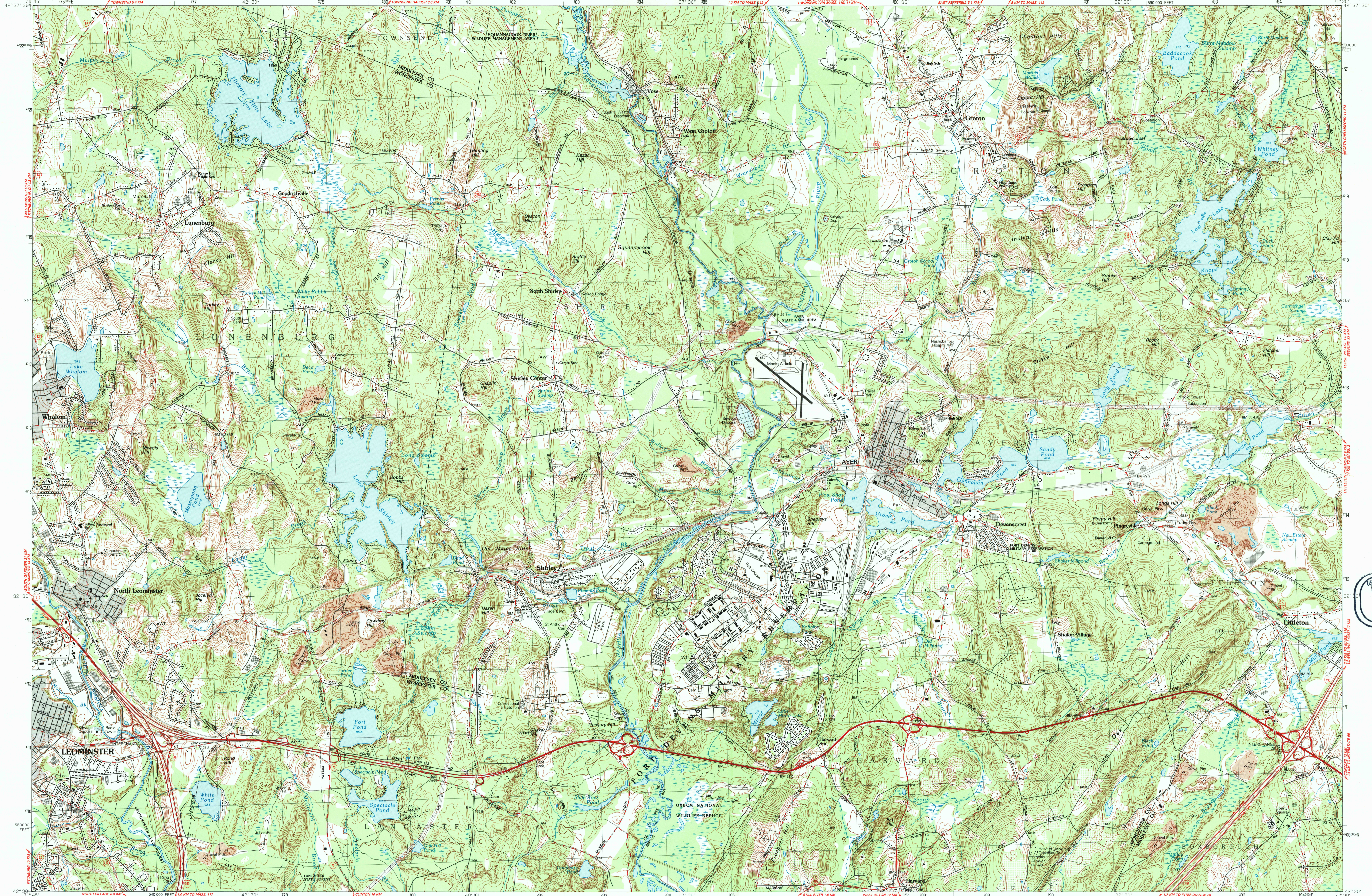
USES HISTORICAL MAP ARCHIVES
FEB 1996
REC'D FILE COPY

ISBN 0-607-23464-0
9 780607 234664

Topographic Map Symbols

Primary highway, hard surface	
Secondary highway, hard surface	
Light-duty road, hard or improved surface	
Unimproved road, trail	
Route marker: Interstate, U.S., State	
Railroad: standard gage; narrow gage	
Bridge: drawbridge	
Footbridge; overpass; underpass	
Rail-up area: only selected landmark buildings shown	
House; barn; church; school; large structure	
Boundary:	
National, with monument	
State	
County, parish	
Civil township, precinct, district	
Incorporated city, village, town	
National or State reservation; small park	
Land grant with monument; land section corner	
U.S. public lands survey: range, township, section	
Range, township; section line: location approximate	
Fence or field line	
Power transmission line, isolated tower	
Dam; dam with lock	
Cemetery; grave	
Campground; picnic area, U.S. location monument	
Wellhead; well; well; spring	
Mine shaft; prospect; shaft or cave	
Control: horizontal station; vertical station; spot elevation	
Contour: index; intermediate; supplementary; depression	
Dashed contour surface: 10% slope; less steep	
Sounding; depth curve	
Parential lake and stream; intermittent lake and stream	
Rapid; large and small; falls, large and small	
Swamp; marsh	
Submerged marsh; land subject to controlled inundation	
Woodland; scattered trees	
Scrub; mangrove	
Orchard; vineyard	

A pamphlet describing topographic maps is available on request



AYER, MASSACHUSETTS
42071-E5-TM-025
1988

FOR SALE BY U.S. GEOLOGICAL SURVEY
DENVER, COLORADO 80225, OR RESTON, VIRGINIA 22092