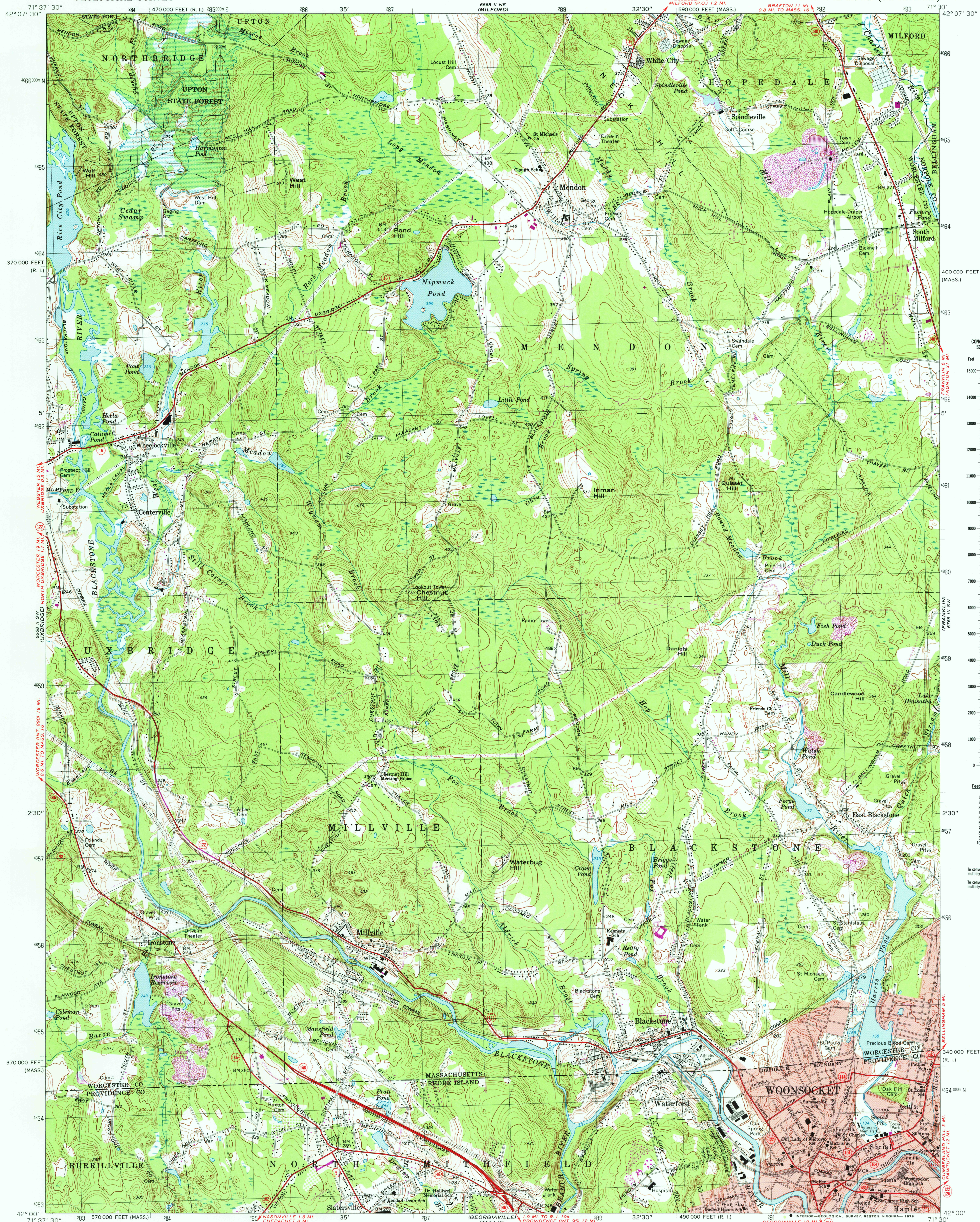


UNITED STATES
DEPARTMENT OF THE INTERIOR
GEOLOGICAL SURVEY

COMMONWEALTH OF MASSACHUSETTS
DEPARTMENT OF PUBLIC WORKS

BLACKSTONE QUADRANGLE
MASSACHUSETTS—RHODE ISLAND
7.5 MINUTE SERIES (TOPOGRAPHIC)



CONVERSION
SCALES



Feet	Meters
1	3048
2	6096
3	9144
4	12192
5	15240
6	18288
7	21336
8	24384
9	27432
10	30480

To convert feet to meters
multiply by 3048

To convert meters to feet
multiply by 3.2808

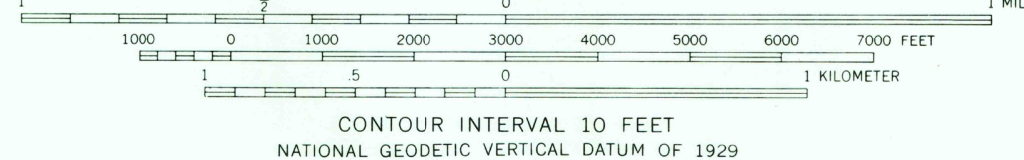
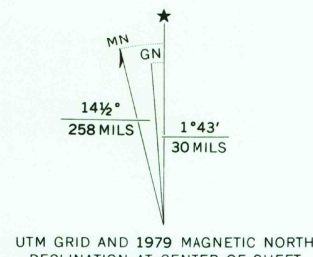
Maped, edited, and published by the Geological Survey

Control by USGS, USC&GS, and Massachusetts Geodetic Survey
Topography by planetable surveys 1942-1943. Revised from
aerial photographs taken 1967. Field checked 1969

Polyconic projection. 1927 North American datum
10,000-foot grids based on Massachusetts coordinate system,
mainland zone, and Rhode Island coordinate system
1000-meter Universal Transverse Mercator grid, zone 19

Fine red dashed lines indicate selected fence and field lines where
generally visible on aerial photographs. This information is unchecked
Red tint indicates areas in which only landmark buildings are shown
Area covered by dashed light-blue pattern is subject
to controlled inundation

There may be private inholdings within the boundaries of
the National or State reservations shown on this map



THIS MAP COMPLIES WITH NATIONAL MAP ACCURACY STANDARDS
FOR SALE BY U. S. GEOLOGICAL SURVEY, RESTON, VIRGINIA 22092
A FOLDER DESCRIBING TOPOGRAPHIC MAPS AND SYMBOLS IS AVAILABLE ON REQUEST

Revisions shown in purple compiled in cooperation with State of
Massachusetts agencies from aerial photographs taken 1977 and other
source data. This information not field checked. Map edited 1979



ROAD CLASSIFICATION
Primary highway, all weather. Light-duty road, all weather,
hard surface. Improved surface.
Unimproved road, fair or dry
weather.
State Route

BLACKSTONE, MASS.—R. I.
N4200—W7130/7.5

1969
PHOTOREVISED 1979
AMS 6668 II SE—SERIES V814

DEC 11 1979

USGS
Historical File
Topographic Division