

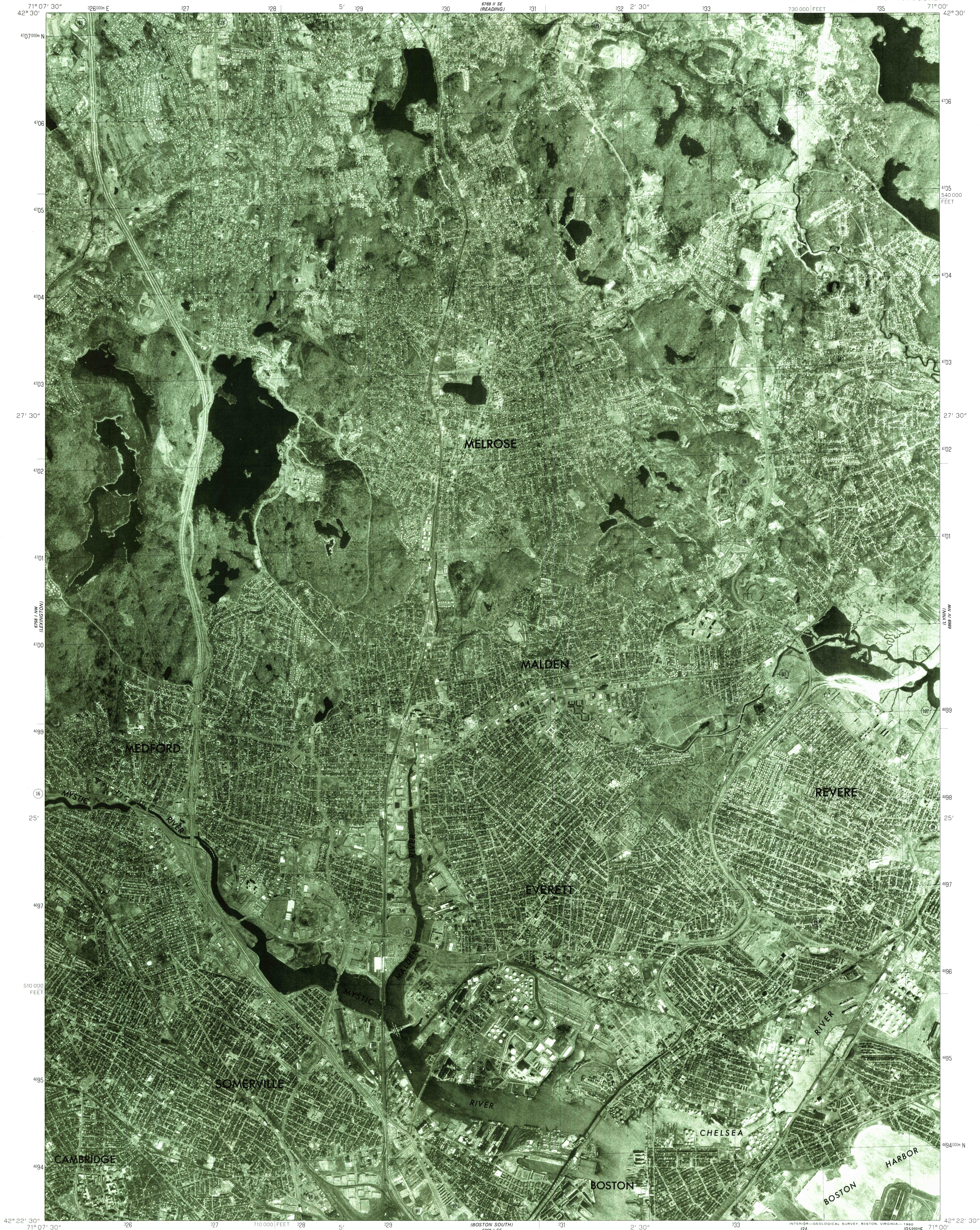
688 1:25
(MILWAUKEE)

UNITED STATES
DEPARTMENT OF THE INTERIOR
GEOLOGICAL SURVEY

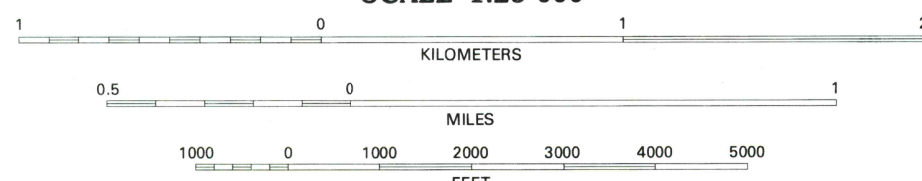
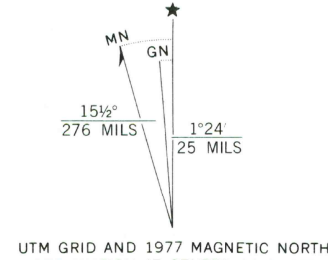
COMMONWEALTH OF MASSACHUSETTS
DEPARTMENT OF PUBLIC WORKS

BOSTON NORTH QUADRANGLE
MASSACHUSETTS
7.5 MINUTE SERIES ORTHOPHOTOQUAD

688 1:25
(MILWAUKEE)



Produced and published by the Geological Survey
Orthophotograph prepared from 1:80,000-scale
aerial photograph taken April 1, 1977
Projection and 10,000-foot grid ticks: Massachusetts
coordinate system, mainland zone (Lambert conformal conic)
1000-meter Universal Transverse Mercator grid,
zone 19. 1927 North American datum
Photomagey rectified by optical scanning
which may produce double or mismatched images;
use the mean of image positions for map point



THIS MAP COMPLIES WITH NATIONAL MAP ACCURACY STANDARDS
FOR SALE BY U. S. GEOLOGICAL SURVEY, RESTON, VIRGINIA 22092



QUADRANGLE LOCATION

PRINCIPAL NUMBERED HIGHWAYS
Interstate Route U. S. Route State Route

This quadrangle area also covered by
1:25,000-scale topographic map

BOSTON NORTH, MASS.
N4222.5-W7100/7.5

USGS
Historical File
Topographic Division

1977
DMA 6768 1 NE-SERIES V014

JUL 1 6 1980

900