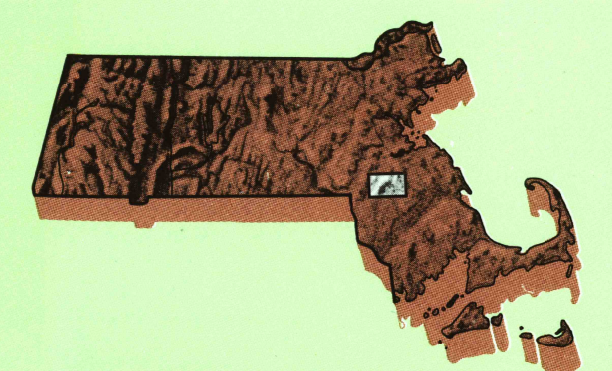


BROCKTON, MASSACHUSETTS

7.5 X 15 MINUTE SERIES (TOPOGRAPHIC)

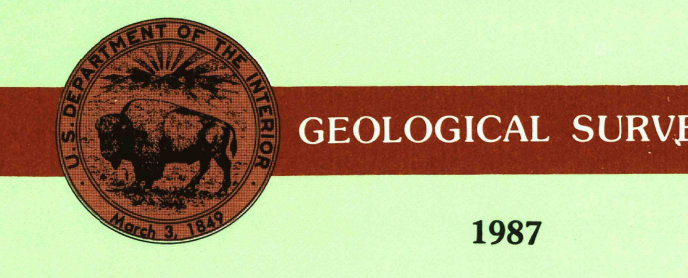
Brockton MASSACHUSETTS

1:25 000-scale metric topographic map



7.5 X 15 MINUTE QUADRANGLE SHOWING

- Contours and elevations in meters
- Highways, roads and other manmade structures
- Water features
- Woodland areas
- Geographic names



Produced by the United States Geological Survey in cooperation with Massachusetts Department of Public Works

Control by USGS, NOS/NOAA, and Commonwealth of Massachusetts agencies

Compiled by photogrammetric methods from aerial photographs taken 1980. Field checked 1981. Map edited 1987

Supersedes Mansfield 1964 and Brockton 1975

1:25,000-scale maps

Projection and 1000-meter grid, zone 19

Universal Transverse Mercator

10,000-foot grid ticks based on Massachusetts coordinate system, mainland zone

1927 North American Datum

To place on the predicted North American Datum 1983, move the projection lines 6 meters south and 42 meters east as shown by dashed corner ticks

There may be private inholdings within the boundaries of the National or State Reservations shown on this map

CONTOUR INTERVAL 3 METERS

NATIONAL GEODETIC VERTICAL DATUM OF 1929

CONTOUR ELEVATIONS SHOWN TO THE NEAREST 0.1 METER

OTHER ELEVATIONS SHOWN TO THE NEAREST 0.5 METER

THIS MAP COMPLIES WITH NATIONAL MAP ACCURACY STANDARDS

CONVERSION TABLE		DECLINATION DIAGRAM		ADJOINING MAPS		
Meters	Feet	MAGNETIC		1	2	3
1	3.2808			4	5	
2	6.5617			6	7	8
3	9.8425			1	2	3
4	13.1234			4	5	6
5	16.4042			7	8	
6	19.6850			10		
7	22.9659					
8	26.2467					
9	29.5275					
10	32.8084					

To convert meters to feet multiply by 3.2808
To convert feet to meters multiply by 0.3048

UTM grid convergence (000 m) at 71° 00' longitude
To convert UTM grid to datum (MAM) add 42 meters
Diagram is approximate

1 Middlefield
2 Norwood
3 Weymouth
4 Franklin
5 Whitman
6 Attleboro
7 Taunton
8 Bridgewater

USGS AND HISTORICAL MAP ARCHIVES

SEP 08 1995

REC'D FILE COPY

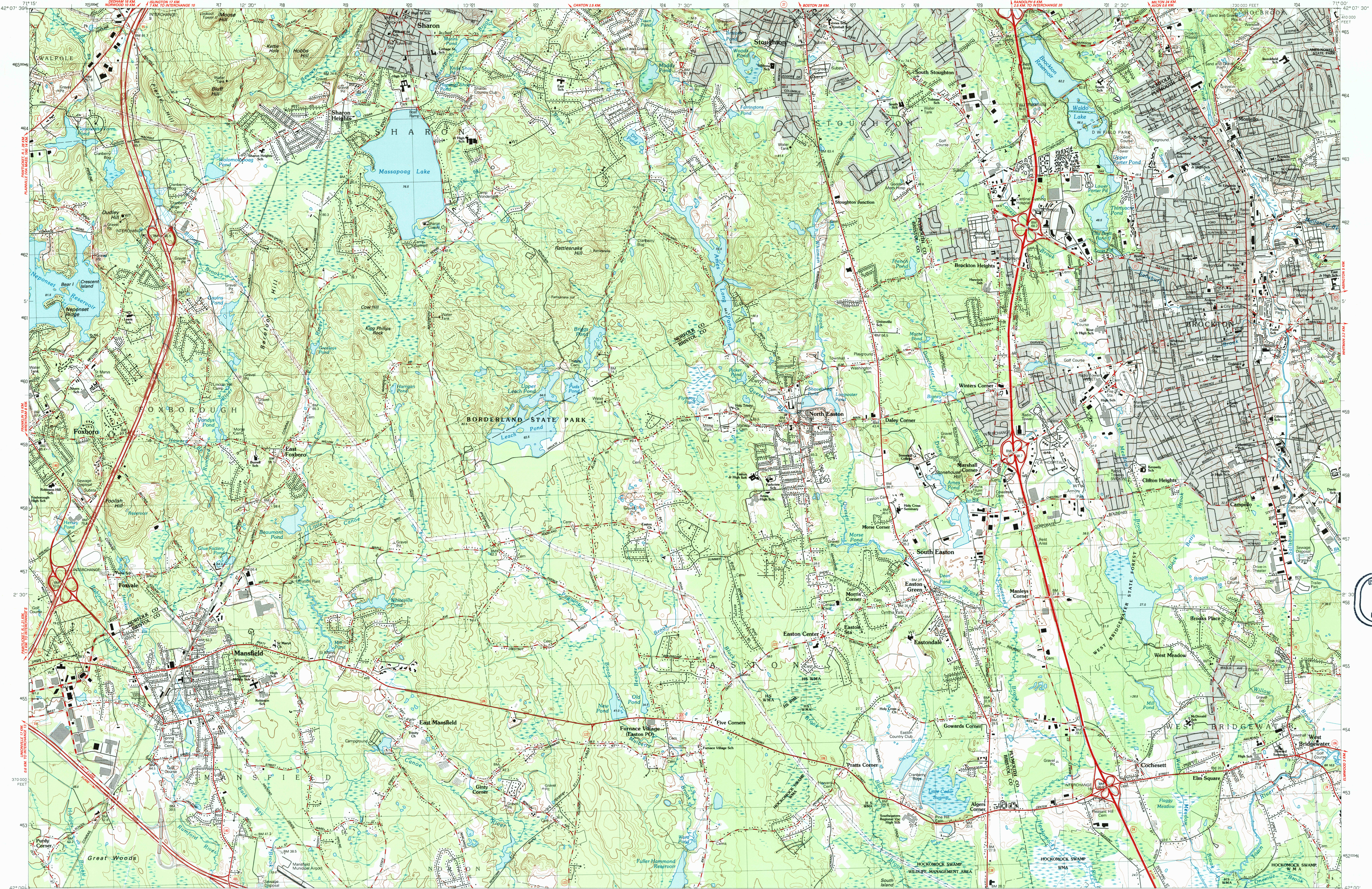
9 780607 234596

Topographic Map Symbols

Primary highway, hard surface	
Secondary highway, hard surface	
Light-duty road, hard or improved surface	
Unimproved road, trail	
Route marker: Interstate, U. S., State	
Railroad: standard gauge, narrow gauge	
Bridge: drawbridge	
Footbridge; overpass; underpass	
Build-up area: only selected landmark buildings shown	
House: barn; church; school; large structure	
Boundary:	
National with monument	
State	
County, parish	
Civil township, precinct, district	
Incorporated city, village, town	
National or State reservation; small park	
Land grant with monument; found section corner	
U. S. public lands survey: range, township, section	
Range, township, section line: location approximate	
Fence or field line	
Power transmission line, isolated tower	
Dam; dam with lock	
Cemetery; grave	
Campground; picnic area; U. S. location monument	
Windmill; water well; spring; found section corner	
Mine shaft; prospect; adit or cave	
Control: horizontal station; vertical station; spot elevation	
Contours: index; intermediate; supplementary; depression	
Distorted surface: strip mine; levee; sand	
Bathymetric contours: index; intermediate	
Perennial lake and stream; intermittent lake and stream	
Rapids, large and small; falls, large and small	
Submerged marsh; marsh; swamp	
Land subject to controlled inundation: woodland	
Scrub; mangrove	
Orchard; vineyard	

A pamphlet describing topographic maps is available, on request

FOR SALE BY U.S. GEOLOGICAL SURVEY, DENVER, COLORADO 80225, OR RESTON, VIRGINIA 22092



SCALE 1:25 000

1 CENTIMETER ON THE MAP REPRESENTS 25 METERS ON THE GROUND

CONTOUR INTERVAL 3 METERS

0 500 1000 2000 3000 4000 5000 METERS

0 1 2 3 4 5 6 7 8 9 10 11 12 13 14 15 MILES

INTEGRAL—GEOLOGICAL SURVEY, RESTON, VIRGINIA—1987

BROCKTON, MASSACHUSETTS 42071-A1-TM-025

1987