

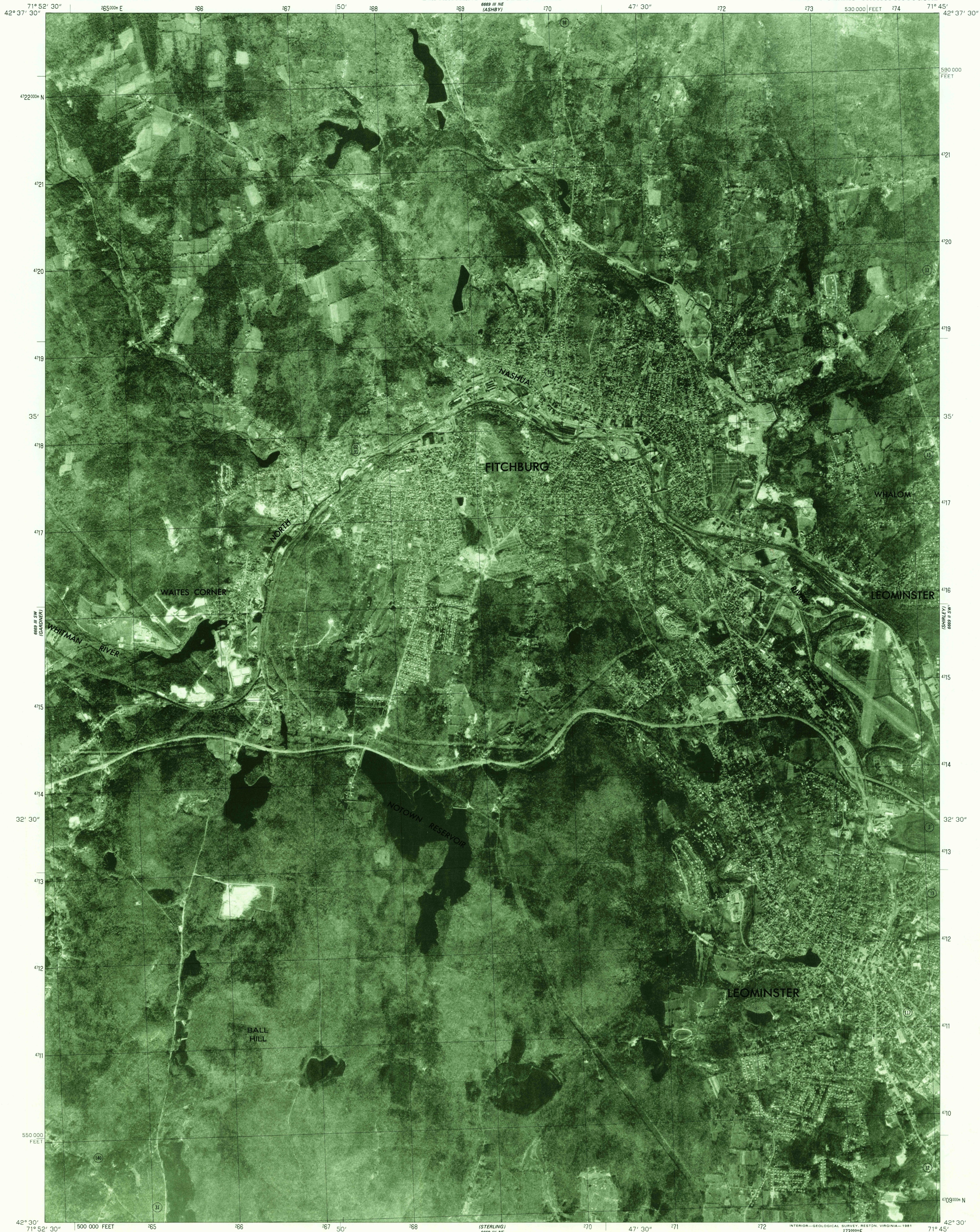
6669 III NW
(ASHBURY)

UNITED STATES
DEPARTMENT OF THE INTERIOR
GEOLOGICAL SURVEY

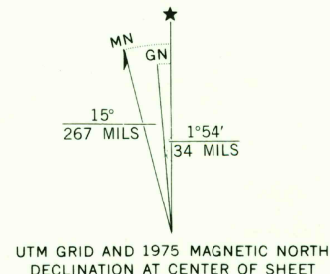
COMMONWEALTH OF MASSACHUSETTS
DEPARTMENT OF PUBLIC WORKS

FITCHBURG QUADRANGLE
MASSACHUSETTS
7.5 MINUTE SERIES ORTHOPHOTOQUAD

6669 I NW
(TOWNSEND)



Produced and published by the Geological Survey
Orthophoto prepared from 1:80,000-scale
aerial photograph taken October 23, 1975
Projection and 10,000-foot grid ticks: Massachusetts
coordinate system, mainland zone (Lambert conformal conic)
1000-meter Universal Transverse Mercator grid,
zone 19. 1927 North American datum
Photomagey rectified by optical scanning
which may produce double or mismatched images;
use the mean of image positions for map point



PRINCIPAL NUMBERED HIGHWAYS
○ Interstate Route ○ U. S. Route ○ State Route



USGS
HISTORICAL FILE
NATIONAL MAPPING DIVISION

This quadrangle area also covered by
1:25,000-scale topographic map

FITCHBURG, MASS.
N4230-W7145/7.5

1975

DMA 6669 III SE-SERIES V014

THIS MAP COMPLIES WITH NATIONAL MAP ACCURACY STANDARDS
FOR SALE BY U. S. GEOLOGICAL SURVEY, RESTON, VIRGINIA 22092

42071-E7-OQ-025

JUN 3 1981

675