

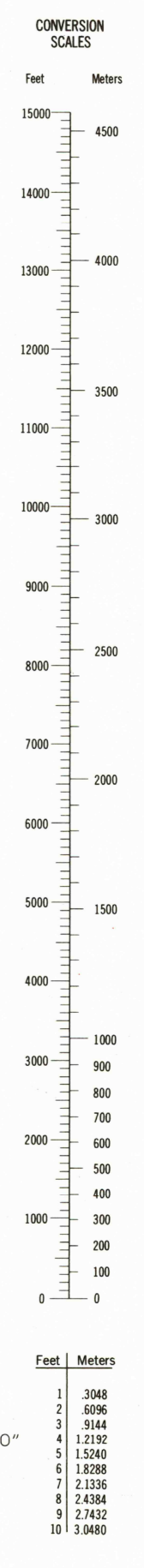
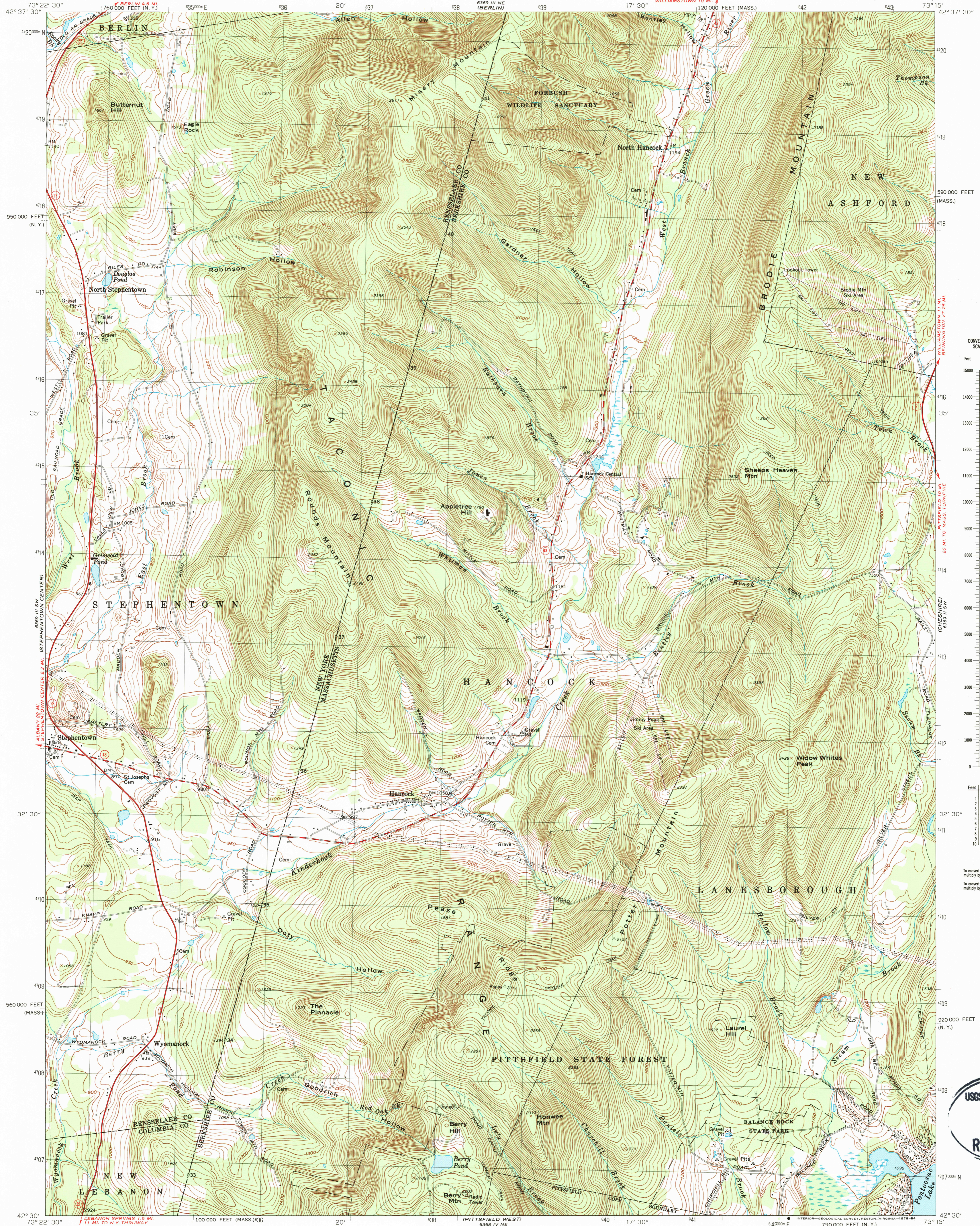
689 III SW (LABORATORY)

UNITED STATES  
DEPARTMENT OF THE INTERIOR  
GEOLOGICAL SURVEY

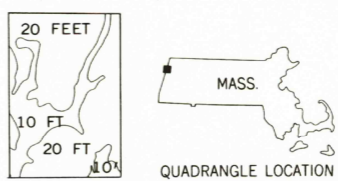
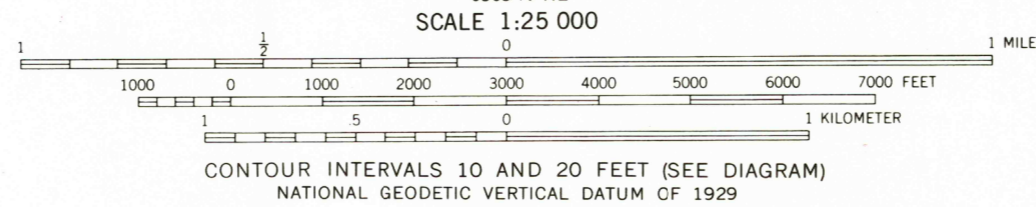
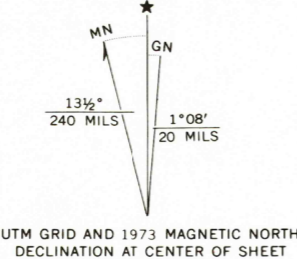
COMMONWEALTH OF MASSACHUSETTS  
DEPARTMENT OF PUBLIC WORKS

HANCOCK QUADRANGLE  
MASSACHUSETTS-NEW YORK  
7.5 MINUTE SERIES (TOPOGRAPHIC)

689 III NW (WILLIAMSTOWN)



Mapped, edited, and published by the Geological Survey  
Control by USGS, USC&GS, and Massachusetts Geodetic Survey  
Planimetry by photogrammetric methods from aerial photographs taken 1942. Topography by planimetric surveys 1944. Revised from aerial photographs taken 1972. Field checked 1973  
Polyconic projection. 1927 North American datum  
10,000-foot grid based on Massachusetts coordinate system, mainland zone, and New York coordinate system, east zone  
1000-meter Universal Transverse Mercator grid,  
zone 18



ROAD CLASSIFICATION  
Primary highway, hard surface  
Secondary highway, hard surface  
Light-duty road, hard or improved surface  
Unimproved road  
Interstate Route  
U. S. Route  
State Route

THIS MAP COMPLIES WITH NATIONAL MAP ACCURACY STANDARDS FOR SALE BY U. S. GEOLOGICAL SURVEY, RESTON, VIRGINIA 22092  
A FOLDER DESCRIBING TOPOGRAPHIC MAPS AND SYMBOLS IS AVAILABLE ON REQUEST

HANCOCK, MASS.-N. Y.  
N4230-W7315/7.5

1973  
AMS 6369 III SE-SERIES V814