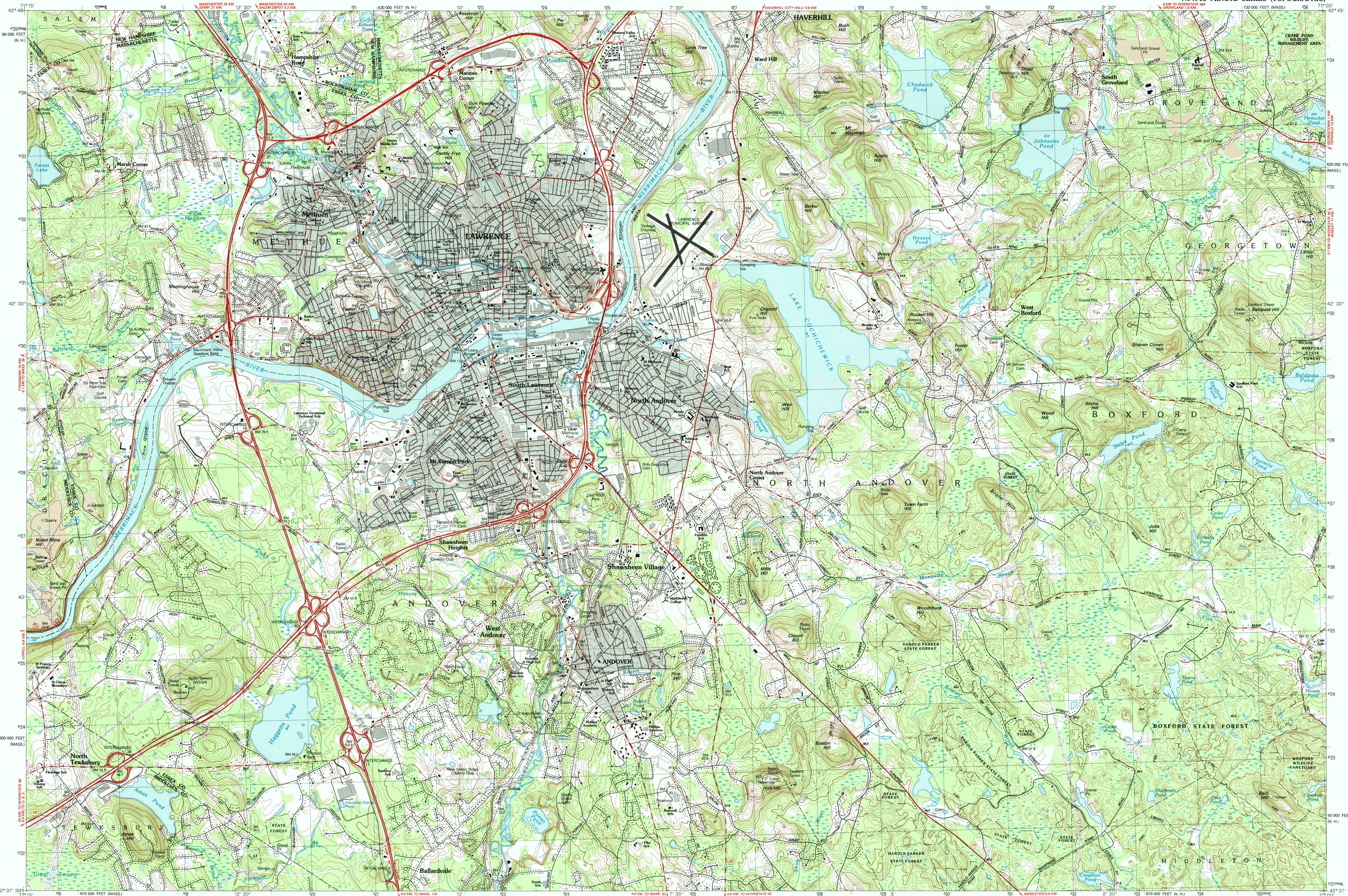


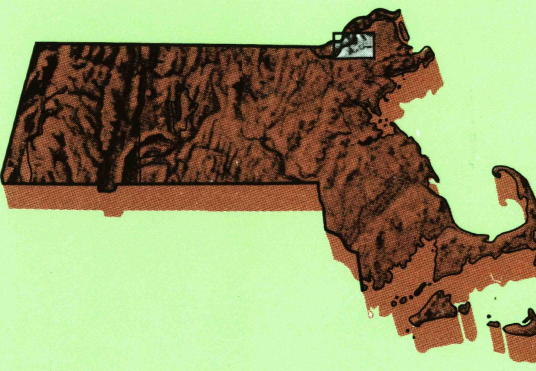
LAWRENCE, MASSACHUSETTS-NEW HAMPSHIRE

7.5 X 15 MINUTE SERIES (TOPOGRAPHIC)



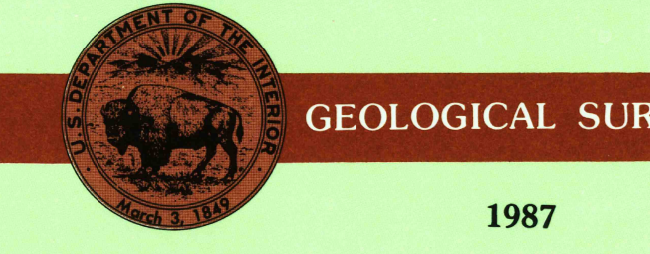
Lawrence MASSACHUSETTS-NEW HAMPSHIRE

1:25 000-scale metric topographic map



7.5 X 15 MINUTE QUADRANGLE SHOWING

- Contours and elevations in meters
- Highways, roads and other manmade structures
- Water features
- Woodland areas
- Geographic names



Produced by the United States Geological Survey in cooperation with Massachusetts Department of Public Works
 Control by USGS, NOS/NOAA, and Commonwealth of Massachusetts agencies
 Compiled by photogrammetric methods from aerial photographs taken 1976. Field checked 1979. Map revised 1987
 The west half of this area also covered by 7.5-minute 1:25,000-scale map: Lawrence dated 1966
 The east half of this area supersedes South Groveland 1:25,000-scale map dated 1966
 Projection and 1000-meter grid: Universal Transverse Mercator, zone 19
 10,000-foot grid ticks based on Massachusetts coordinate system, maintained zone, and New Hampshire coordinate system 1927 North American Datum
 To place on the predicted North American Datum 1983, move the projection lines 6 meters south and 41 meters west as shown by dashed corner ticks
 There may be private inholdings within the boundaries of the National or State reservations shown on this map.

CONTOUR INTERVAL 3 METERS
 NATIONAL GEODETIC VERTICAL DATUM OF 1929
 OTHER ELEVATIONS SHOWN TO THE NEAREST 0.1 METER
 OTHER ELEVATIONS SHOWN TO THE NEAREST 0.3 METER

THIS MAP COMPLIES WITH NATIONAL MAP ACCURACY STANDARDS

CONVERSION TABLE		DECLINATION DIAGRAM		ADJOINING MAPS		
Meters	Feet	MAGNETIC DECLINATION		1	2	3
1	3.2808			1	2	3
2	6.5617			4	5	6
3	9.8425			7	8	
4	13.1234					
5	16.4042					
6	19.6850					
7	22.9659					
8	26.2467					
9	29.5275					
10	32.8084					

To convert meters to feet multiply by 3.2808
 To convert feet to meters multiply by 0.3048
 ITRM grid convergence (IGN and ITRM magnetic declination (MM) at center of map; Diagram is approximate

FOR SALE BY U.S. GEOLOGICAL SURVEY
 800 853 4846
 80225, OR RESTON, VIRGINIA 20192
 FEB 07 1995
 REC'D FILE COPY
Topographic Map Symbols

- Primary highway, hard surface
- Secondary highway, hard surface
- Light-duty road, hard or improved surface
- Unimproved road, trail
- Route marker: Interstate, U. S. State
- Railroad: standard gauge, narrow gauge
- Bridge: drawbridge
- Footbridge; overpass; underpass
- Built-up area: only selected landmark buildings shown
- House; barn; church; school; large structure
- Boundary:
 - National, with monument
 - State
 - County, parish
 - Civil township, precinct, district
 - Unincorporated city, village, town
 - National or State reservation: small park
 - Land grant with monument; found section corner
 - U. S. public lands survey: range, township, section
 - Range, township, section line; location approximate
 - Fence or field line
 - Power transmission line, located tower
 - Dam; dam with lock
 - Canalway; canal
 - Campground; picnic area; U. S. location monument
 - Windmill; water well; spring
 - Mine shaft; prospect; adit or cave
 - Control: horizontal station; vertical station; spot elevation
 - Contours: index; intermediate; supplementary; depression
 - Distorted surface: strip mine, lava, sand
 - Bathymetric contours: index; intermediate
 - Perennial lake and stream; intermittent lake and stream
 - Rapids, large and small; falls, large and small
 - Submerged marsh; marsh, swamp
 - Land subject to controlled inundation; woodland
 - Scrub; mangrove
 - Orchard; vineyard