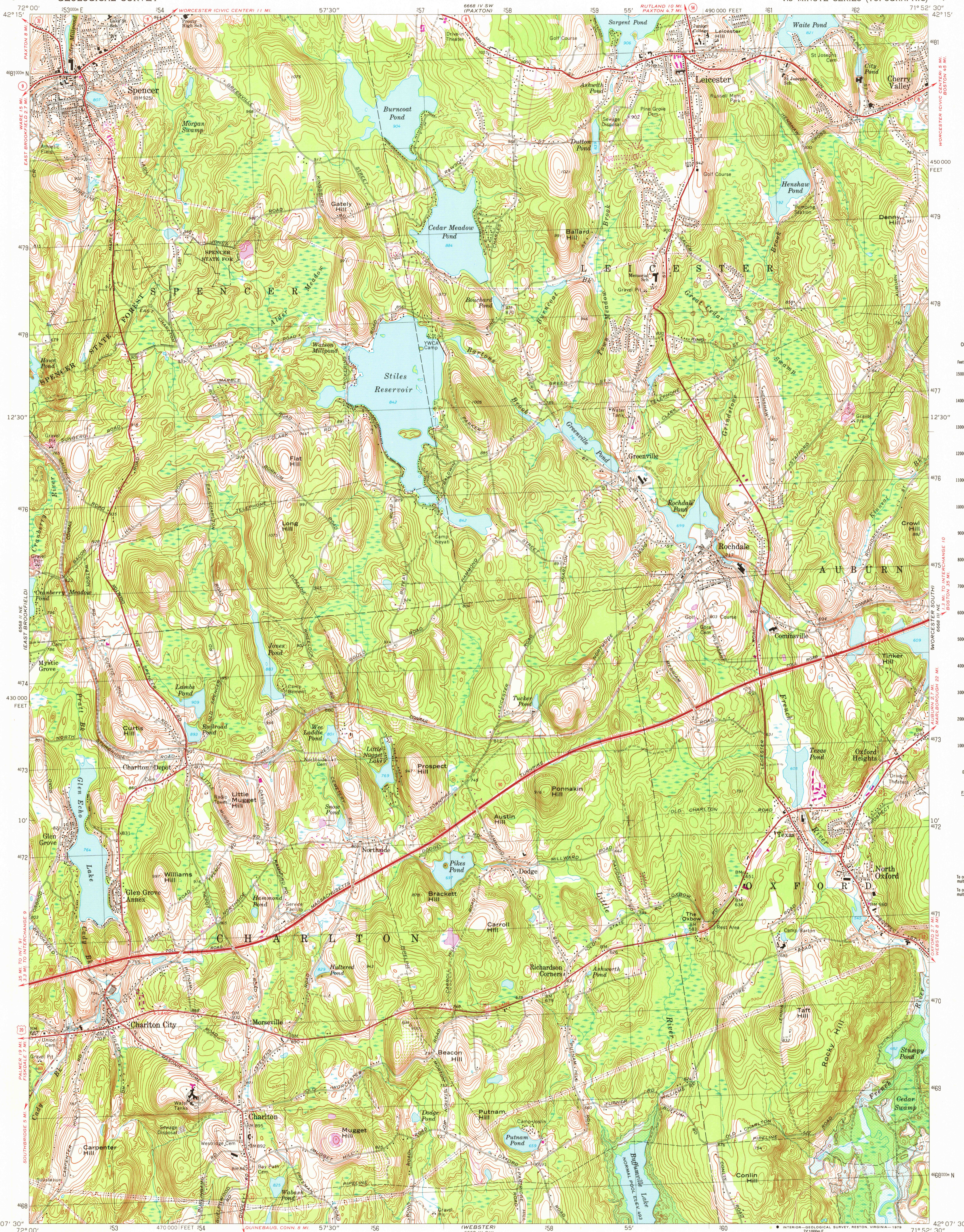


UNITED STATES  
DEPARTMENT OF THE INTERIOR  
GEOLOGICAL SURVEY

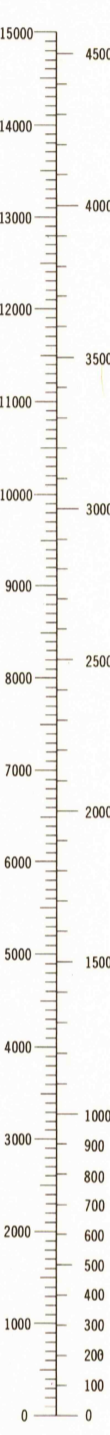
COMMONWEALTH OF MASSACHUSETTS  
DEPARTMENT OF PUBLIC WORKS

LEICESTER QUADRANGLE  
MASSACHUSETTS—WORCESTER CO.  
7.5 MINUTE SERIES (TOPOGRAPHIC)



CONVERSION  
SCALES

Feet Meters



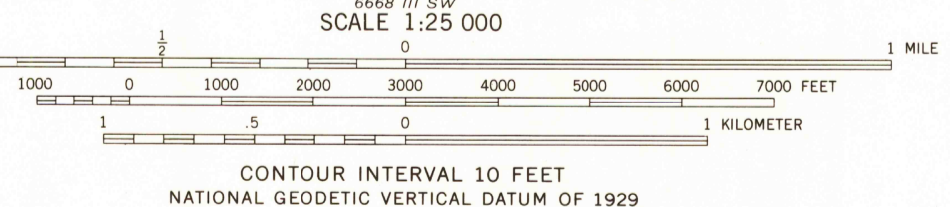
Feet Meters

1	3048
2	6096
3	9144
4	12192
5	15240
6	18288
7	21336
8	24384
9	27432
10	30480

To convert feet to meters  
multiply by 3048  
To convert meters to feet  
multiply by 3.2808

Mapped, edited, and published by the Geological Survey  
Control by USGS, USC&GS, and Massachusetts Geodetic Survey  
Planimetry by photogrammetric methods from aerial photographs  
Topography by planimetric surveys 1937. Revised from aerial  
photographs taken 1966. Field checked 1969  
Polyconic projection. 1927 North American datum  
10,000-foot grid based on Massachusetts coordinate system,  
mainland zone  
1000-meter Universal Transverse Mercator grid,  
zone 19  
Fine red dashed lines indicate selected fence and field lines where  
generally visible on aerial photographs. This information is unchecked  
Areas covered by dashed light blue pattern are subject to  
controlled inundation to 501 feet by Hodges Village Dam and  
524 feet in Buttrickville Reservoir

There may be private inholdings within the boundaries of  
the National or State reservations shown on this map



THIS MAP COMPLIES WITH NATIONAL MAP ACCURACY STANDARDS  
FOR SALE BY U. S. GEOLOGICAL SURVEY, RESTON, VIRGINIA 22092  
A FOLDER DESCRIBING TOPOGRAPHIC MAPS AND SYMBOLS IS AVAILABLE ON REQUEST

Revisions shown in purple compiled in cooperation with the State of  
Massachusetts agencies from aerial photographs taken 1975 and other  
source data. This information not field checked. Map edited 1979



RETURN TO:  
USGS AND HISTORICAL MAP ARCHIVES

LEICESTER, MASS.  
N4207.5—W7152.5/7.5  
1969  
PHOTOREVISED 1979  
AMS 6668 III NW—SERIES V814

JUL 28 1982