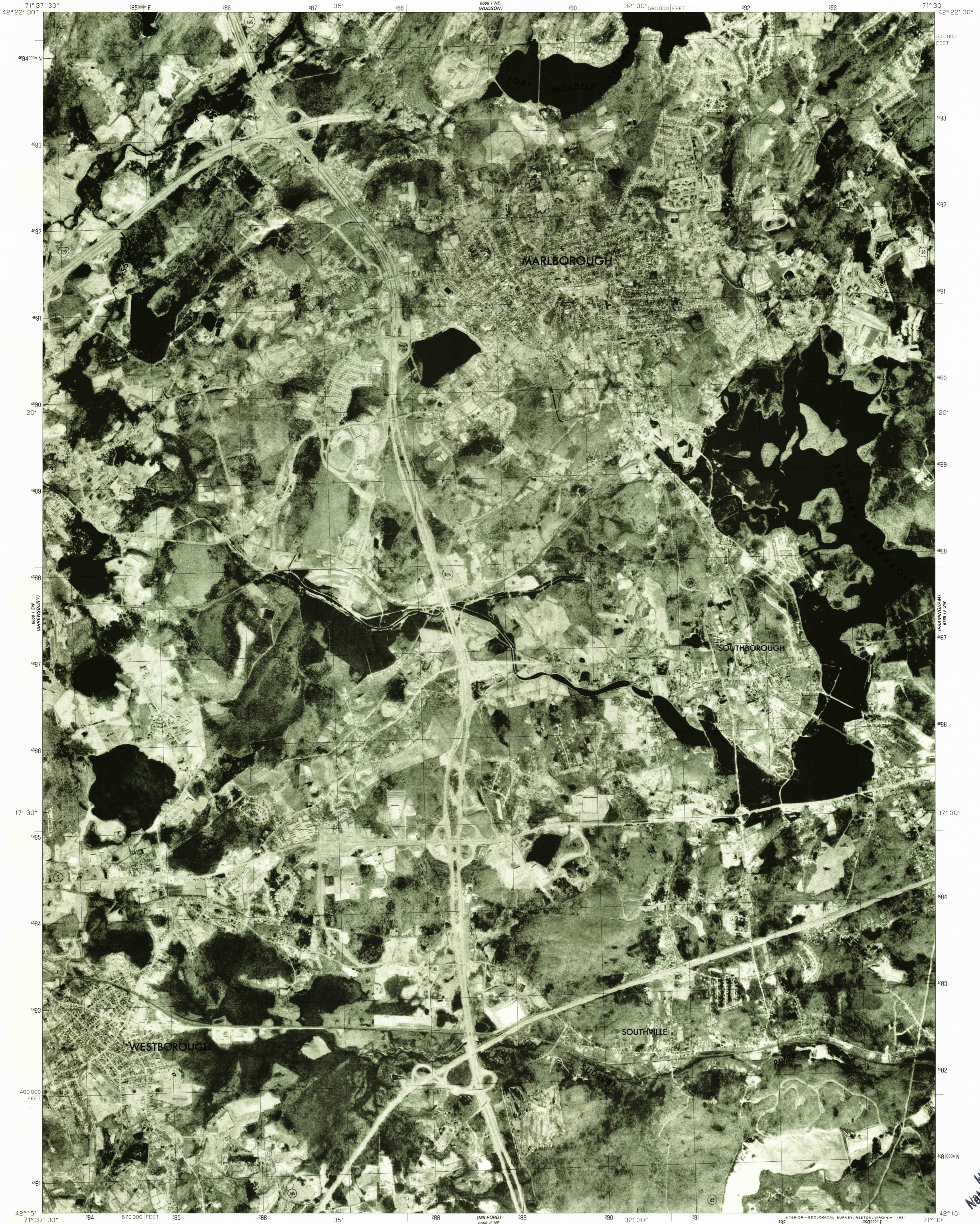
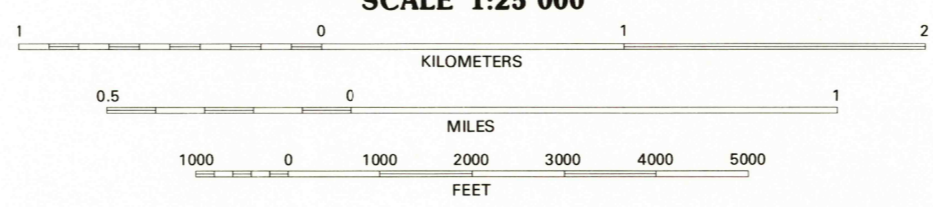
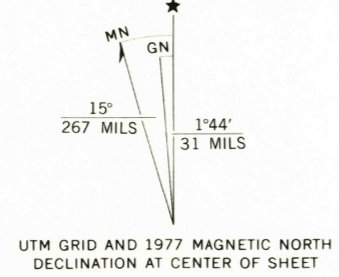


888 I NW  
(CANTON)

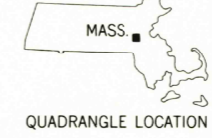
888 IV NW  
(MAYFIELD)



Produced and published by the Geological Survey  
Orthophoto prepared from 1:80,000-scale  
aerial photograph taken April 1, 1977  
Projection and 10,000-foot grid ticks: Massachusetts  
coordinate system, mainland zone (Lambert conformal conic)  
1000-meter Universal Transverse Mercator grid,  
zone 19. 1927 North American datum  
Photom imagery rectified by optical scanning  
which may produce double or mismatched images;  
use the mean of image positions for map point



PRINCIPAL NUMBERED HIGHWAYS  
Interstate Route U.S. Route State Route



This quadrangle area also covered by  
1:25,000-scale topographic map

MARLBOROUGH, MASS.  
N4215-W7130/7.5

THIS MAP COMPLIES WITH NATIONAL MAP ACCURACY STANDARDS  
FOR SALE BY U. S. GEOLOGICAL SURVEY, RESTON, VIRGINIA 22092

42071-C5-OQ-025

1977

DMA 6668 I SE-SERIES V014

USGS  
Historical File  
National Mapping Div.  
APR 10 1981

675