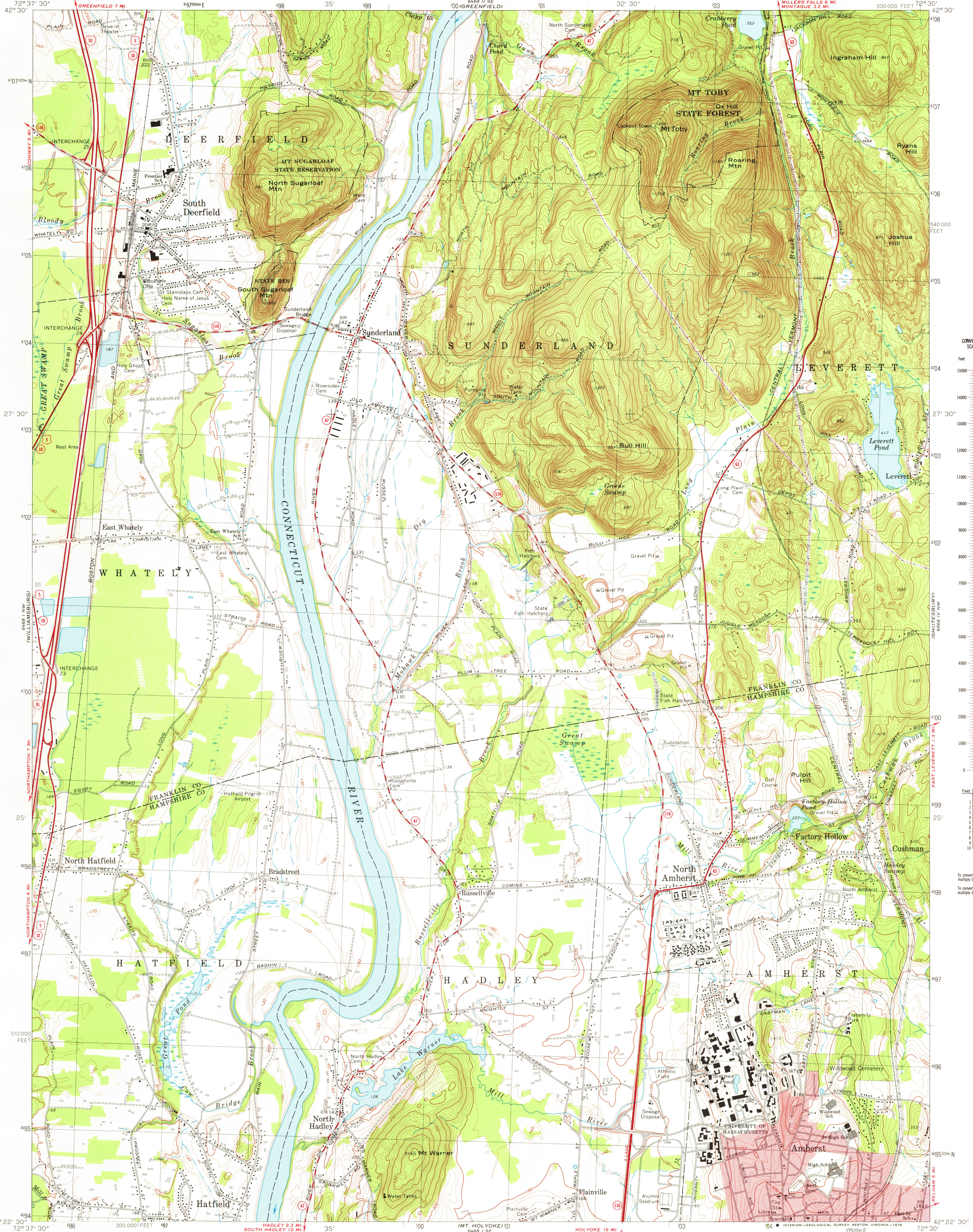


UNITED STATES
DEPARTMENT OF THE INTERIOR
GEOLOGICAL SURVEY

COMMONWEALTH OF MASSACHUSETTS
DEPARTMENT OF PUBLIC WORKS

MT. TOBY QUADRANGLE
MASSACHUSETTS
7.5 MINUTE SERIES (TOPOGRAPHIC)



Mapped, edited, and published by the Geological Survey
Control by USGS, USC&GS, and Massachusetts Geodetic Survey
Topography by planetable surveys 1935. Revised from aerial
photographs taken 1970. Field checked 1971
Polyconic projection. 1927 North American datum
10,000-foot grid based on Massachusetts coordinate system,
mainland zone
1000-meter Universal Transverse Mercator grid,
zone 18
Red tint indicates area in which only landmark buildings are shown

UTM GRID AND 1971 MAGNETIC NORTH
DECLINATION AT CENTER OF SHEET

FOR SALE BY U. S. GEOLOGICAL SURVEY, RESTON, VIRGINIA 22092
A FOLDER DESCRIBING TOPOGRAPHIC MAPS AND SYMBOLS IS AVAILABLE ON REQUEST

ROAD CLASSIFICATION
Primary highway, hard surface
Secondary highway, hard surface
Interstate Route
U. S. Route
State Route
Light-duty road, hard or improved surface
Unimproved road

MT. TOBY, MASS.
N4222.5—W7230.7.5

USGS
Historical File
Topographic Division
1971
AMS 6468 1 NE—SERIES V814

RETURN TO:
USGS AND HISTORICAL MAP ARCHIVES

APR 23 1978
30