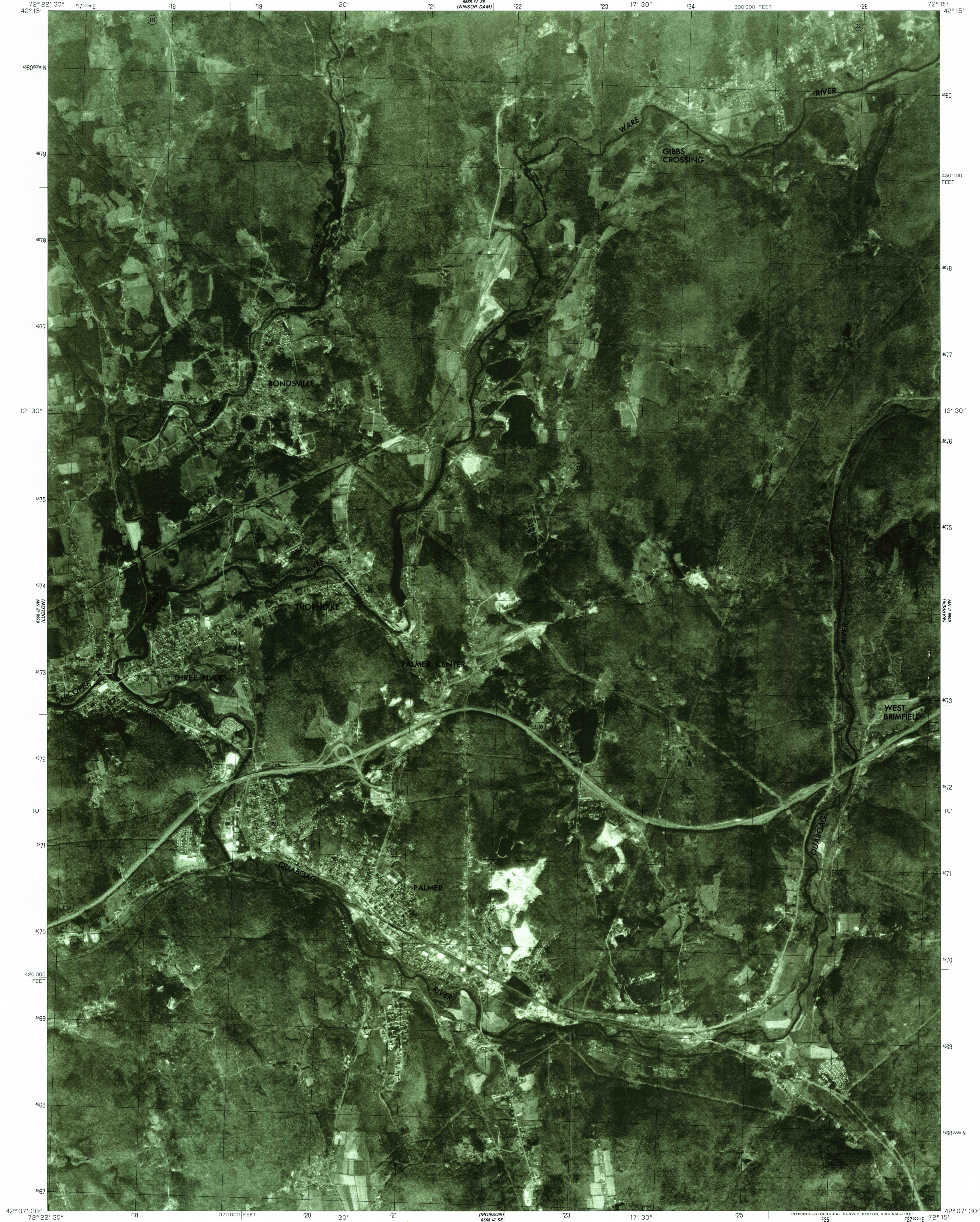


6568 I 3W
(WALDEN)
6568 I 3W
(WALDEN)

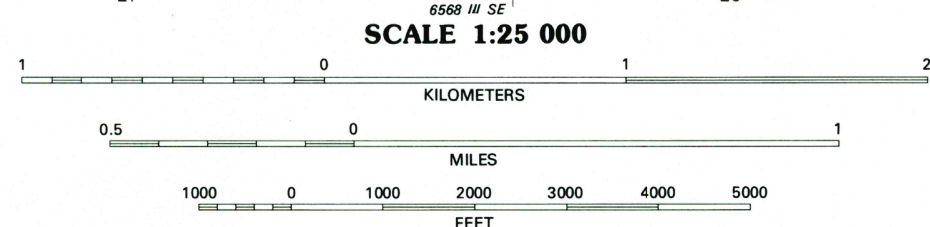
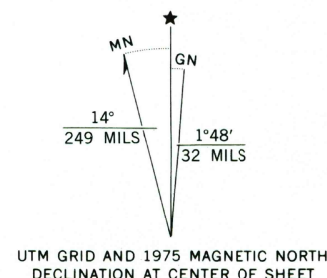
UNITED STATES
DEPARTMENT OF THE INTERIOR
GEOLOGICAL SURVEY

COMMONWEALTH OF MASSACHUSETTS
DEPARTMENT OF PUBLIC WORKS

PALMER QUADRANGLE
MASSACHUSETTS
7.5 MINUTE SERIES ORTHOPHOTOQUAD



Produced and published by the Geological Survey
Orthophotograph prepared from 1:80,000-scale
aerial photograph taken October 23, 1975
Projection and 10,000-foot grid ticks: Massachusetts
coordinate system, mainland zone (Lambert conformal conic)
1000-meter Universal Transverse Mercator grid,
zone 18. 1927 North American datum
Photomagey rectified by optical scanning
which may produce double or mismatched images;
use the mean of image positions for map point



PRINCIPAL NUMBERED HIGHWAYS
Interstate Route U.S. Route State Route

This quadrangle area also covered by
1:25,000-scale topographic map

PALMER, MASS.
N4207.5-W7215/7.5
1975

DMA 5568 III NE-SERIES V014

THIS MAP COMPLIES WITH NATIONAL MAP ACCURACY STANDARDS
FOR SALE BY U. S. GEOLOGICAL SURVEY, RESTON, VIRGINIA 22092

42072-B3-00-025

USGS
HISTORICAL FILE
NATIONAL MAPPING DIVISION

JUN 8 1981
675