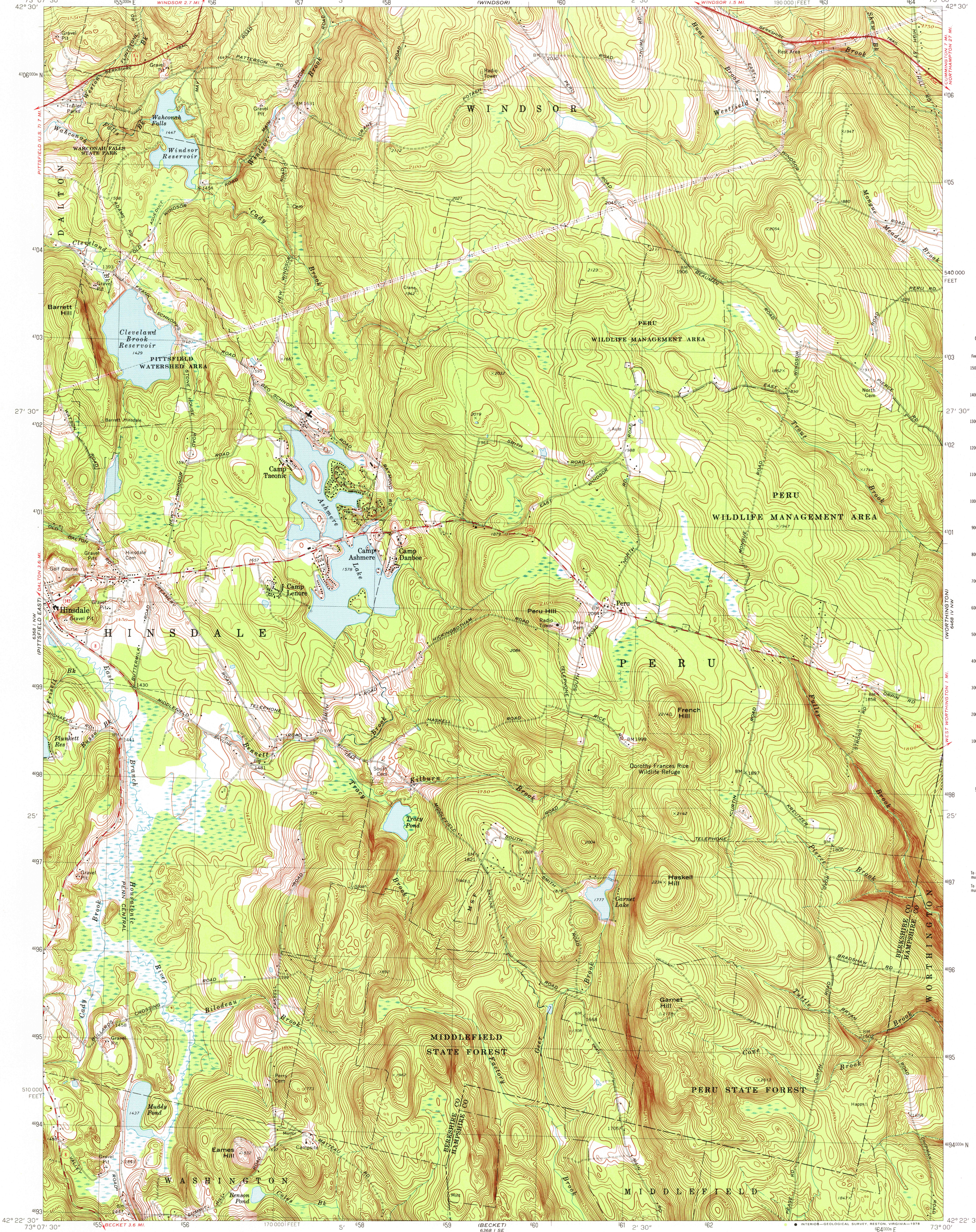


689 1/2 BY
C125134E2

689 1/2 BY
IPLANE120

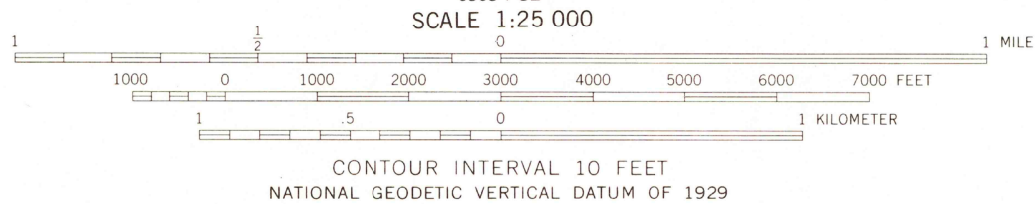
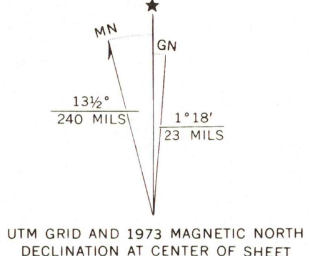


CONVERSION SCALES

Feet	Meters
15000	4500
14000	4000
13000	3500
12000	3000
11000	2500
10000	2000
9000	1500
8000	1000
7000	750
6000	500
5000	250
4000	1000
3000	900
2000	800
1000	700
500	600
0	500

To convert feet to meters multiply by 3048
To convert meters to feet multiply by 3.2808

Mapped, edited, and published by the Geological Survey
Control by USGS, USC&GS, and Massachusetts Geodetic Survey
Topography by planetable surveys 1944-1945. Revised from
aerial photographs taken 1971. Field checked 1973
Polyconic projection. 1927 North American datum
10,000-foot grid based on Massachusetts coordinate system,
mainland zone
1000-meter Universal Transverse Mercator grid,
zone 18



SCALE 1:25 000
CONTOUR INTERVAL 10 FEET
NATIONAL GEODETIC VERTICAL DATUM OF 1929



ROAD CLASSIFICATION
Primary highway, hard surface
Secondary highway, hard surface
Light-duty road, hard or improved surface
Unimproved road
Interstate Route
U. S. Route
State Route

USGS
Historical File
Topographic Division

PERU, MASS.
N4222.5—W7300/7.5
1973
AMS 6368 I NE—SERIES V814

MAR 24 1979

2500