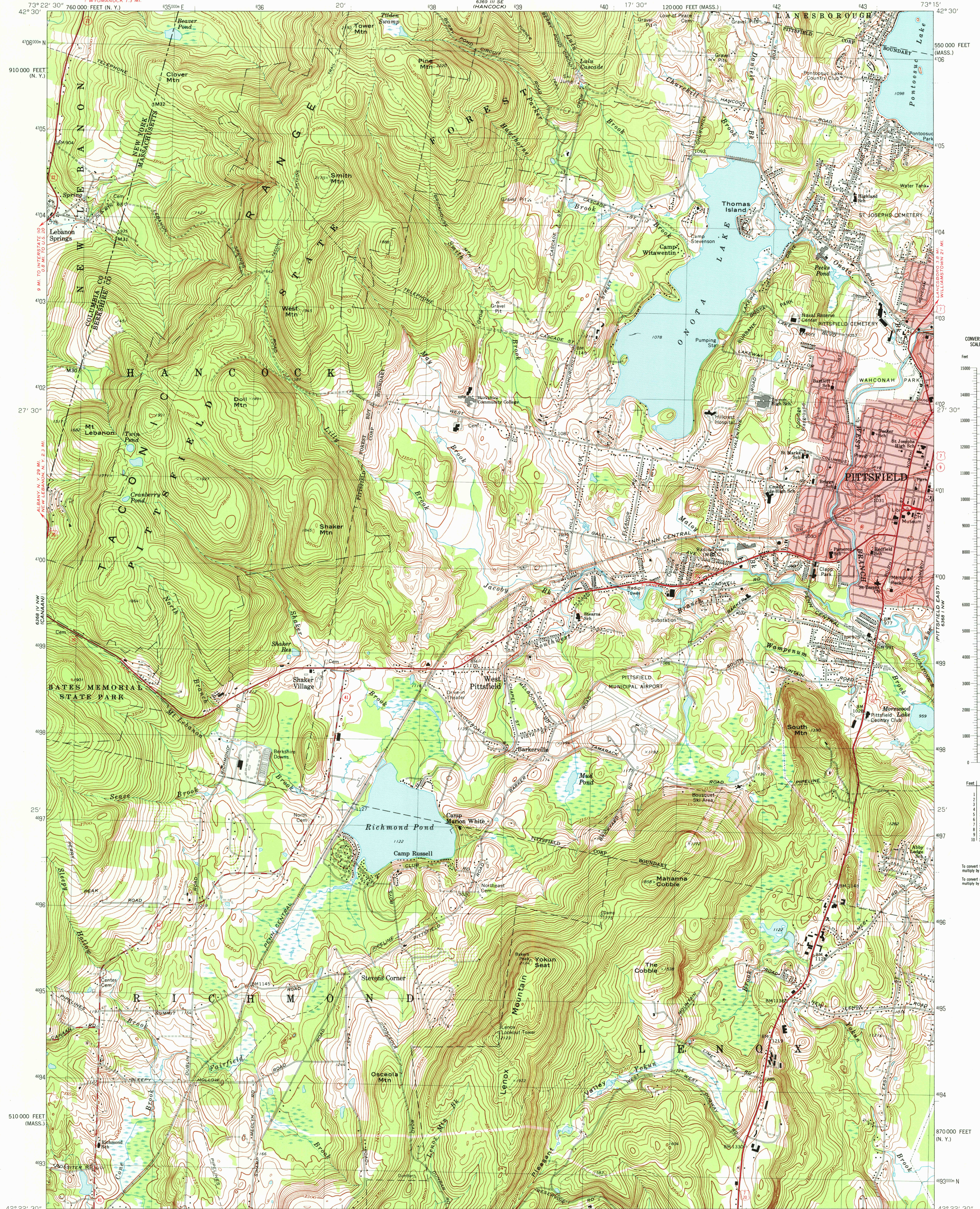


UNITED STATES
DEPARTMENT OF THE INTERIOR
GEOLOGICAL SURVEY

COMMONWEALTH OF MASSACHUSETTS
DEPARTMENT OF PUBLIC WORKS

PITTSFIELD WEST QUADRANGLE
MASSACHUSETTS-NEW YORK
7.5 MINUTE SERIES (TOPOGRAPHIC)



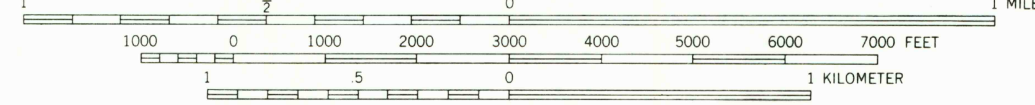
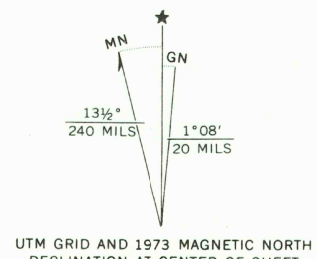
CONVERSION SCALES

Feet	Meters
15000	4500
14000	4000
13000	3500
12000	3000
11000	2500
10000	2000
9000	1500
8000	1000
7000	2000
6000	1500
5000	1000
4000	1000
3000	900
2000	600
1000	300
0	0

To convert feet to meters multiply by .3048
To convert meters to feet multiply by 3.2808

Mapped, edited, and published by the Geological Survey
Control by USGS, USC&GS, and Massachusetts Geodetic Survey
Topography by planetable surveys 1943-1944. Revised from
aerial photographs taken 1971. Field checked 1973
Polyconic projection. 1927 North American datum
10,000-foot grid based on Massachusetts coordinate system,
mainland zone, and New York coordinate system, east zone
1000-meter Universal Transverse Mercator grid, zone 18

Fine red dashed lines indicate selected fence and field lines where
generally visible on aerial photographs. This information is unchecked
Red tint indicates areas in which only landmark buildings are shown



CONTOUR INTERVALS 10 AND 20 FEET (SEE DIAGRAM)
NATIONAL GEODETIC VERTICAL DATUM OF 1929



ROAD CLASSIFICATION
Primary highway, hard surface
Secondary highway, hard surface
Light-duty road, hard or improved surface
Unimproved road
Interstate Route
U. S. Route
State Route

PITTSFIELD WEST, MASS.-N. Y.
N4222.5-W7315.7.5

USGS
Historical File
Topographic Division
1973
AMS 6368 IV NE-SERIES V814

MAR 24 1979

2500