



HISTORICAL FILES
(DO NOT REMOVE)

Prepared under the direction of the Chief of Engineers by the Corps of Engineers, U. S. Army Map Service (AMWS), Washington, D. C. Compiled in 1948 from Massachusetts, 1:31,680, Shirley, 1939. Planimetric detail compiled from aerial photography by photo-planimetric methods. Aerial photography Sept. 1947. Horizontal and vertical control by USCGS, USGS, and Massachusetts Geodetic Survey, Map field checked. This map complies with the national standard map accuracy requirements.

LEGEND

Tint indicates areas in which only landmark buildings are shown.

ROAD DATA 1948

In developed areas, only through roads are classified.

Hard surface, heavy duty road, four or more lanes wide	Loose surface, graded and drained, or narrow hard surface road.
Hard surface, heavy duty road, two lanes wide; Three lanes wide	Improved dirt road or street
Hard surface, medium duty road, four or more lanes wide	Unimproved dirt road, Trail
Hard surface, medium duty road, two lanes wide; Three lanes wide	Route markers: Federal; State

Buildings: Horizontal control point

School; Church

Standard gauge railroad: Single track; Double track

Narrow gauge railroad

Railroad in street

Carline

National boundary

State boundary (with monument)

County boundary

Town or city boundary

Corporate limits

Reservation boundary

Bench mark, monument

Bench mark, non-monumented

Spot elevation in feet: Checked; Unchecked

Woods or brushwood

Vineyard; Orchard

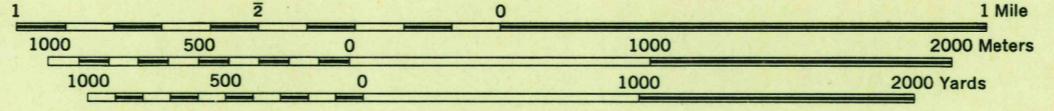
Intermittent lake

Intermittent stream; Dam

Swamp, marsh

Rapids; Falls

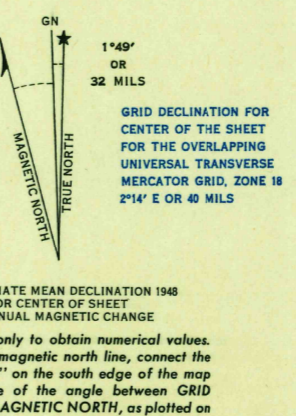
Large rapids and falls



CONTOUR INTERVAL 10 FEET
DATUM IS MEAN SEA LEVEL
TRANSVERSE MERCATOR PROJECTION
1927 NORTH AMERICAN DATUM
ONE THOUSAND METER UNIVERSAL TRANSVERSE MERCATOR GRID, ZONE 19
BLUE NUMBERED TICKS OUTSIDE THE NEATLINE INDICATE THE OVERLAPPING 1,000 METER UNIVERSAL TRANSVERSE MERCATOR GRID, ZONE 18
BROWN NUMBERED TICKS INSIDE THE NEATLINE INDICATE THE 1,000 METER U.S. POLYCONIC GRID, ZONE 19

THE LAST THREE DIGITS OF THE GRID NUMBERS ARE OMITTED

USERS NOTING ERRORS OR OMISSIONS ON THIS MAP ARE URGED TO MARK HEREON AND FORWARD DIRECTLY TO COMMANDING OFFICER, ARMY MAP SERVICE, WASHINGTON, D. C. MAPS SO FORWARDED WILL BE RETURNED OR REPLACED IF DESIRED.



INDEX TO BOUNDARIES

1	2	3
4	5	6

INDEX TO ADJOINING SHEETS

71°45'00" W	71°42'30" W	71°40'00" W
42°37'30" N	42°35'00" N	42°32'30" N

GRID DECLINATION FOR CENTER OF THE SHEET FOR THE OVERLAPPING UNIVERSAL TRANSVERSE MERCATOR GRID, ZONE 18
1" = 20 MI.

APPROXIMATE MEAN DECLINATION 1948 FOR CENTER OF SHEET
NO ANNUAL MAGNETIC CHANGE

Use diagram only to obtain numerical values. To determine magnetic north line, connect the point "P" on the south edge of the map with the value of the angle between GRID NORTH and MAGNETIC NORTH, as plotted on the degree scale of the north edge of the map.

SHIRLEY, MASSACHUSETTS
N4230-W7137.5/7.5

HISTORICAL FILES
(DO NOT REMOVE)

FILE COPY
Not to be Removed From Files