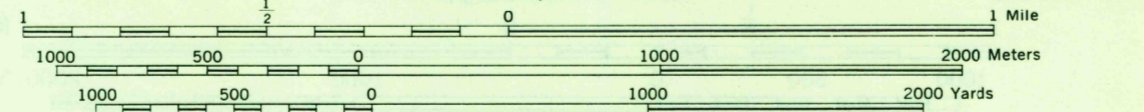


AMS V814
Edition 3-AMS (First Printing, 2-55)

Prepared by the Army Map Service (AMS), Corps of Engineers, U. S. Army, Washington, D. C. Copied in 1954 from Massachusetts, 1:31,680, USGS, Shirley, edition 1959. Original map compiled by U. S. Geological Survey. Topography compiled by planimetric methods, 1923 and 1935. Revised in 1950. Reprinted in 1951 with corrections.

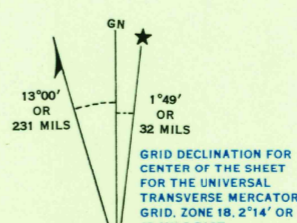


CONTOUR INTERVAL 10 FEET
VERTICAL DATUM, SEA LEVEL DATUM OF 1929

TRANSVERSE MERCATOR PROJECTION
HORIZONTAL DATUM, 1927 NORTH AMERICAN DATUM

BLACK NUMBERED LINES INDICATE THE 1,000 METER UNIVERSAL TRANSVERSE MERCATOR GRID, ZONE 19
BLUE NUMBERED TICKS OUTSIDE THE NEARLINE INDICATE THE 1,000 METER UNIVERSAL TRANSVERSE MERCATOR GRID, ZONE 18
THE LAST THREE DIGITS OF THE GRID NUMBERS ARE OMITTED

GRID ZONE DESIGNATION	TO GIVE A STANDARD REFERENCE ON THE SHEET TO NEAREST 100 METERS
18T	SAMPLE POINT WHITE SOIL
BT	1. Locate first VERTICAL grid line to left of point and read LARGE figures including the line number in the top or bottom margin, or on the line itself. 2. Estimate tenths from grid line to point. Estimate tenths from grid line to point, or on the line itself. 3. Locate first HORIZONTAL grid line below point and read LARGE figures including the line number in the left or right margin, or on the line itself. 4. Estimate tenths from grid line to point.
BT	SAMPLE REFERENCE
	1. Reporting beyond 100,000 meters or if point bears an overlapping grid, prefix 100,000 Meter Squares Identification, etc. 2. If reporting beyond 1° in any direction, prefix Grid Zone Designation as:



APPROXIMATE MEAN DECLINATION 1960
ANNUAL MAGNETIC CHANGE 1 EASTERLY
Use diagram only to obtain numerical values.
To determine magnetic north line, connect the point "70" on the south edge of the map with the value of the angle between GRID NORTH and MAGNETIC NORTH, as printed on the degree scale of the north edge of the map.

LEGEND

ROAD DATA (1951)
In developed areas, only through roads are classified

Hard surface, heavy duty road, four or more lanes wide	4 LANES LINES	Improved light duty road, street	-----
Hard surface, heavy duty road, two lanes wide; Three lanes wide	2 LANES	Unimproved dirt road	-----
Hard surface, medium duty road, four or more lanes wide	4 LANES LINES	Trail	-----
Hard surface, medium duty road, two lanes wide; Three lanes wide	2 LANES	Route markers: Federal; State	○
Buildings	■	Horizontal control point	△
Barns, sheds, greenhouses, stadiums, etc.	■	Bench mark, monumented	BM X 792
Standard gauge railroad	—+—+—+—	Bench mark, non-monumented	X 431
Narrow gauge railroad	—+—+—+—	Spot elevation in feet: Checked; Unchecked	169 * 168
Railroad in street	—+—+—+—	Woods or brushwood	■
Carline	—+—+—+—	Vineyard; Orchard	■
National boundary	—+—+—+—	Swamp, marsh	■
State boundary (with monument)	—+—+—+—	Rapids; Falls	■
County boundary	—+—+—+—	Large rapids; Large falls	■
County subdivision boundary	—+—+—+—		
Reservation boundary	—+—+—+—		
Military reservation boundary	—+—+—+—		

PRINTED BY ARMY MAP SERVICE, CORPS OF ENGINEERS, 2-55, 601602

INDEX TO BOUNDARIES

1	2	3	4	5	6	7	8
9	10	11	12	13	14	15	16

INDEX TO ADJOINING SHEETS

1	2	3	4
5	6	7	8
9	10	11	12
13	14	15	16

Shirley, Massachusetts

HISTORICAL FILES
(DO NOT REMOVE)