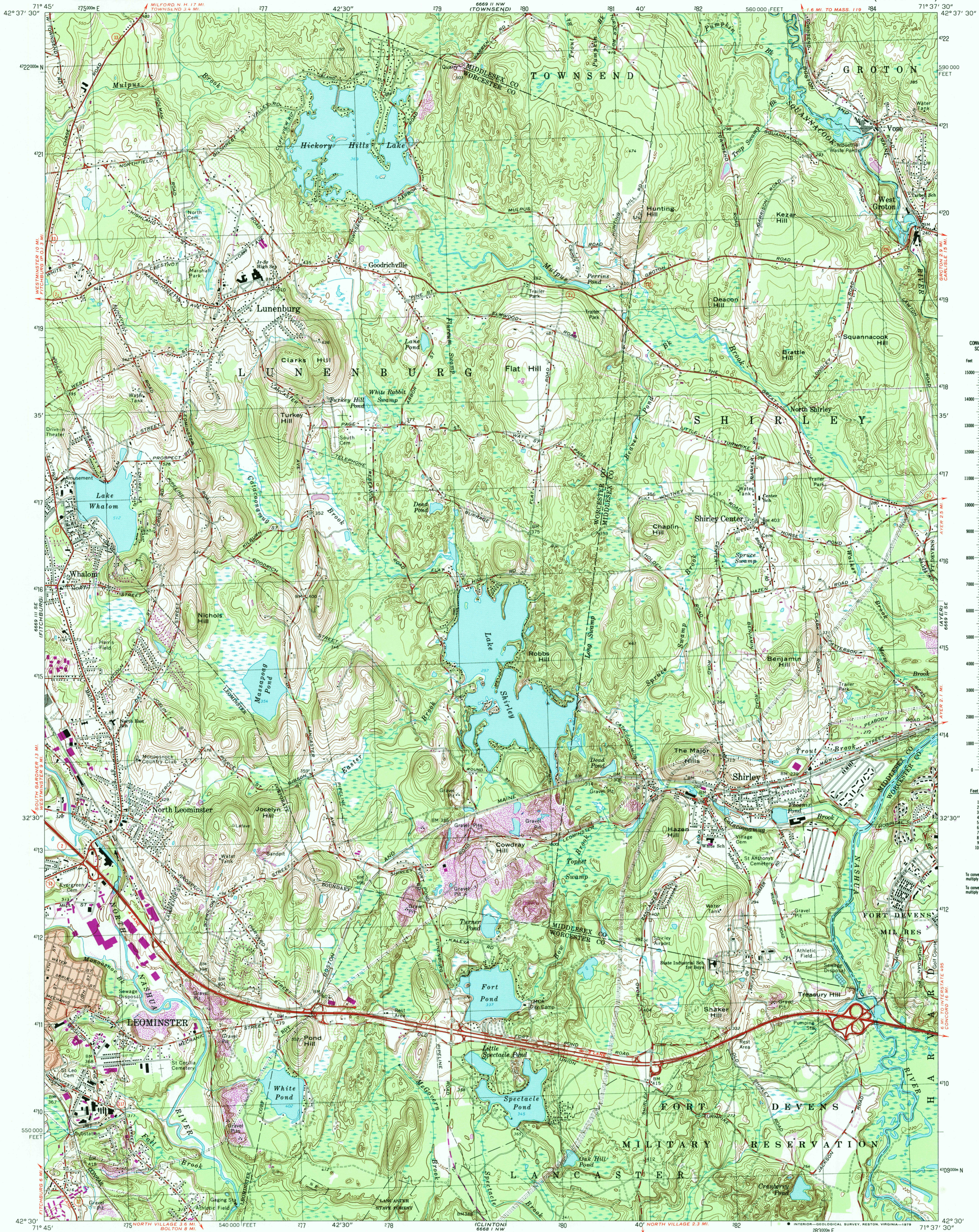


669 11 SE
(FITCHBURG)

669 11 NE
(PEPPERELL)



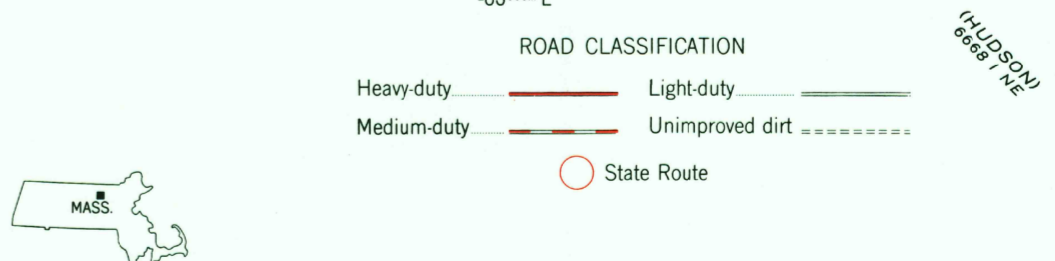
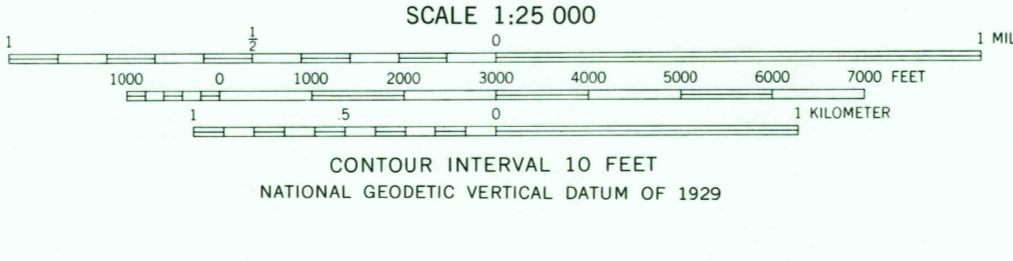
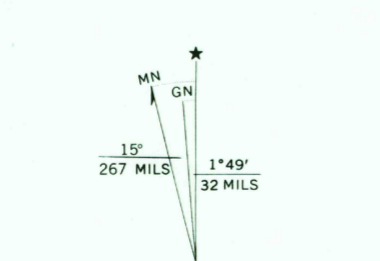
CONVERSION SCALES

Feet	Meters
15000	4500
14000	4200
13000	3900
12000	3600
11000	3300
10000	3000
9000	2700
8000	2400
7000	2100
6000	1800
5000	1500
4000	1200
3000	900
2000	600
1000	300
500	150
200	60
100	30

To convert feet to meters multiply by 0.3048
To convert meters to feet multiply by 3.2808

Mapped, edited, and published by the Geological Survey
Control by USGS, USC&GS, and Massachusetts Geodetic Survey
Topography by planetable surveys 1923 and 1935. Revised 1965
Polyconic projection. 1927 North American datum
10,000-foot grid based on Massachusetts coordinate system,
mainland zone
1000-meter Universal Transverse Mercator grid,
zone 19

Red tint indicates area in which only landmark buildings are shown
There may be private inholdings within the boundaries of
the National or State reservations shown on this map
Revisions shown in purple compiled in cooperation with State of
Massachusetts agencies from aerial photographs taken 1975 and other
source data. This information not field checked. Map edited 1979



SHIRLEY, MASS.
N4230—W7137.5/7.5
1965
PHOTOREVISED 1979
AMS 6669 11 SW—SERIES V814

