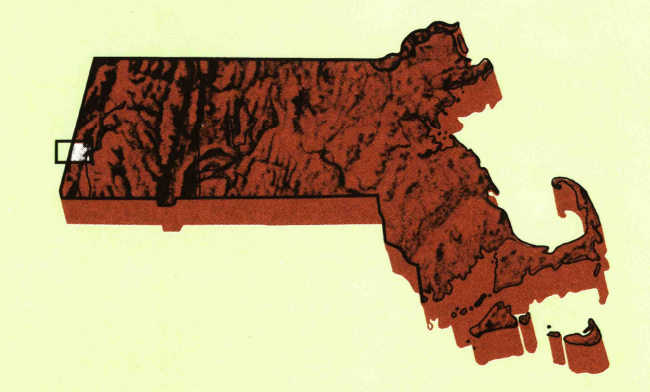


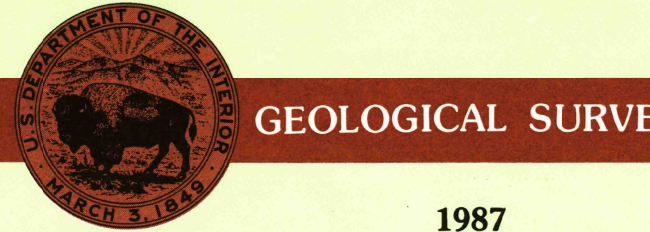
Stockbridge MASSACHUSETTS-NEW YORK

1:25 000-scale metric topographic map



7.5 X 15 MINUTE QUADRANGLE SHOWING

- Contours and elevations in meters
- Highways, roads and other manmade structures
- Water features
- Woodland areas
- Geographic names



Produced by the United States Geological Survey in cooperation with Massachusetts Department of Public Works
 Control by USGS, NOS/NOAA, and Commonwealth of Massachusetts agencies
 Compiled by photogrammetric methods from aerial photographs taken 1980. Field checked 1981. Map edited 1987
 The west half of this area also covered by 7.5-minute 1:25,000-scale map: State Line dated 1973
 The east half of this area supersedes Stockbridge 1:25,000-scale map dated 1973
 Projection and 1000-meter grid, zone 18 Universal Transverse Mercator
 10,000-foot grid ticks based on Massachusetts coordinate system, mainland zone and New York coordinate system, east zone 1927 North American Datum
 To place on the projected North American Datum 1983, move the projection lines 5 meters south and 36 meters west as shown by dashed corner ticks
 There may be private inholdings within the boundaries of the National or State reservations shown on this map

CONTOUR INTERVAL 3 METERS NATIONAL GEODETIC VERTICAL DATUM OF 1929

CONTROL ELEVATIONS SHOWN TO THE NEAREST 0.1 METER OTHER ELEVATIONS SHOWN TO THE NEAREST 0.5 METER

THIS MAP COMPLIES WITH NATIONAL MAP ACCURACY STANDARDS

CONVERSION TABLE		DECLINATION DIAGRAM		ADJOINING MAPS		
Meters	Feet	MAGNETIC DECLINATION		1	2	3
1	3.2808	↓		1	2	3
2	6.5617	↓		4	5	6
3	9.8425	↓		7	8	9
4	13.1234	↓		10	11	12
5	16.4042	↓		13	14	15
6	19.6850	↓		16	17	18
7	22.9659	↓		19	20	21
8	26.2467	↓		22	23	24
9	29.5276	↓		25	26	27
10	32.8084	↓		28	29	30

To convert meters to feet multiply by 3.2808
 To convert feet to meters multiply by 0.3048

UTM grid convergence (GN) and 1987 magnetic declination (MD) at center of map. Diagram is approximate.

1 East Chatham 1:24 000
 2 Pittsfield West 1:24 000
 3 Chatham 1:24 000
 4 East Lee 1:24 000
 5 Great Barrington 1:24 000
 6 Otis

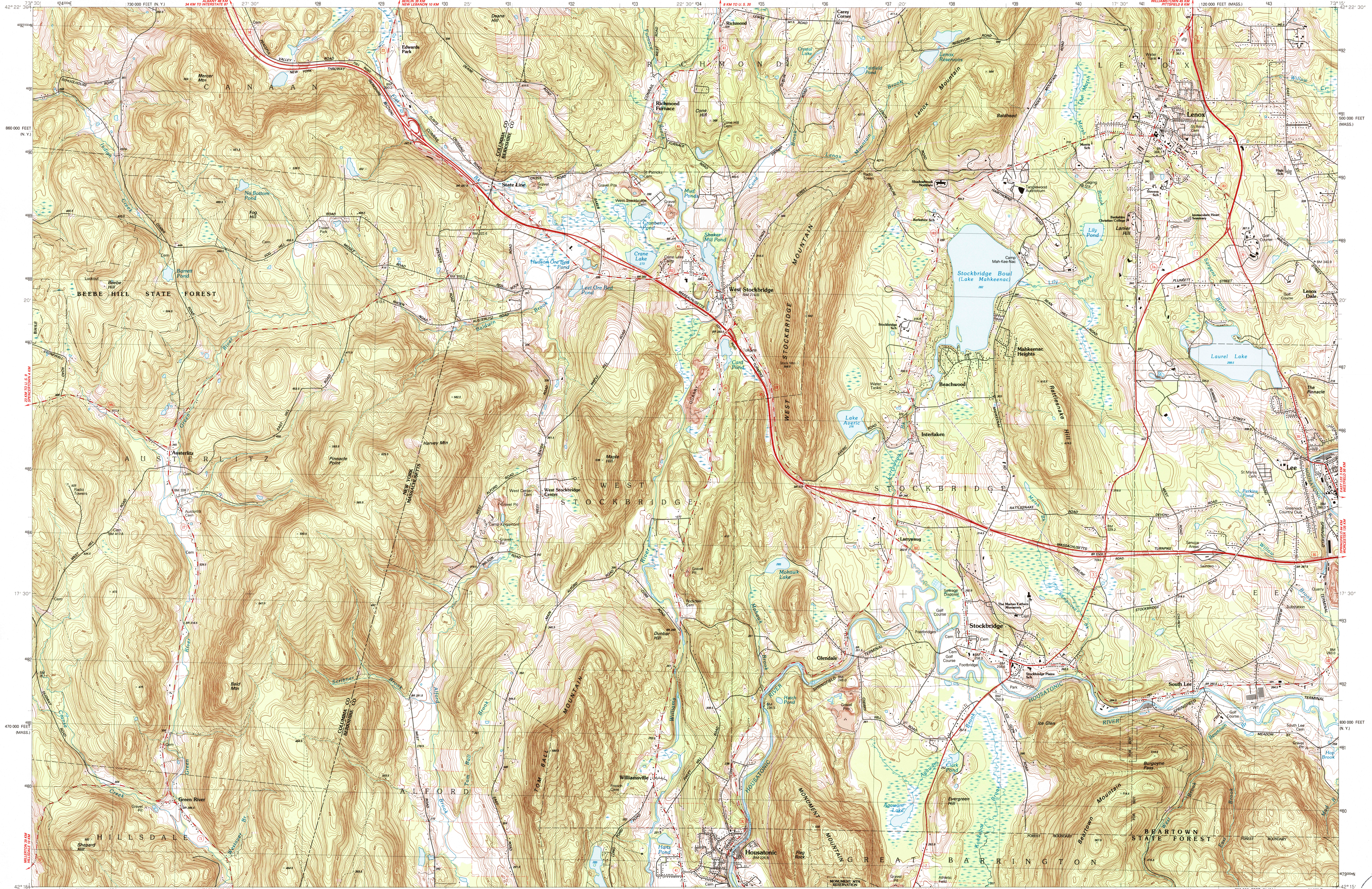
FOR SALE BY U. S. GEOLOGICAL SURVEY DENVER, COLORADO 80225, OR RESTON, VIRGINIA 22092

Topographic Map Symbols

Primary highway, hard surface	—
Secondary highway, hard surface	—
Light-duty road, hard or improved surface	—
Unimproved road, trail	—
Route marker: Interstate, U. S., State	—
Railroad: standard gauge, narrow gauge	—
Bridge: overhead	—
Footbridge: overpass, underpass	—
Built-up area: only selected landmark buildings shown	—
House: barn, church, school, large structure	—
Boundary: National, with monument	—
State	—
County, parish	—
Civil township, precinct, district	—
Incorporated city, village, town	—
National or State reservation; small park	—
Land grant with monument; found section corner	—
U. S. public lands survey; range, township, section	—
Range, township, section line; location approximate	—
Fence or field line	—
Power transmission line, located tower	—
Dam; dam with lock	—
Canal; waterway	—
Campground; picnic area; U. S. location monument	—
Windmill; water well; spring	—
Mine shaft; prospect; adit or cave	—
Control: national station; vertical datum; spot elevation	—
Contours: index; intermediate; supplementary; depression	—
Distorted surface: strip mine, lava, sand	—
Bathymetric contours: index; intermediate	—
Perennial lake and stream; intermittent lake and stream	—
Rapids, large and small; falls, large and small	—
Swamp; marsh	—
Submerged marsh; land subject to controlled inundation	—
Woodland: coniferous trees	—
Shrub; mangrove	—
Orchard; meadow	—

STOCKBRIDGE, MASSACHUSETTS-NEW YORK

7.5 X 15 MINUTE SERIES (TOPOGRAPHIC)



JB-103

