

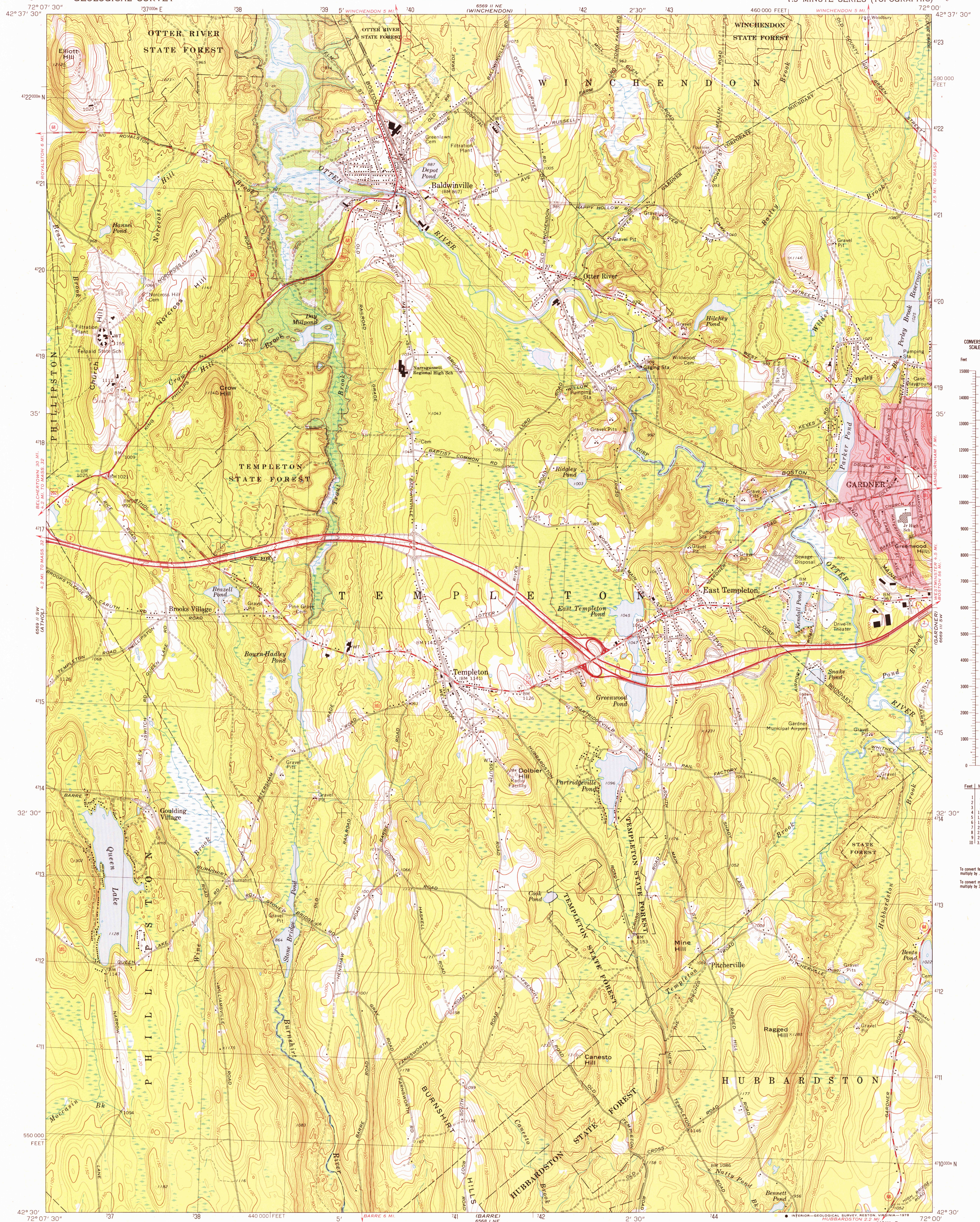
6569 II SE
ROYALSTON

UNITED STATES
DEPARTMENT OF THE INTERIOR
GEOLOGICAL SURVEY

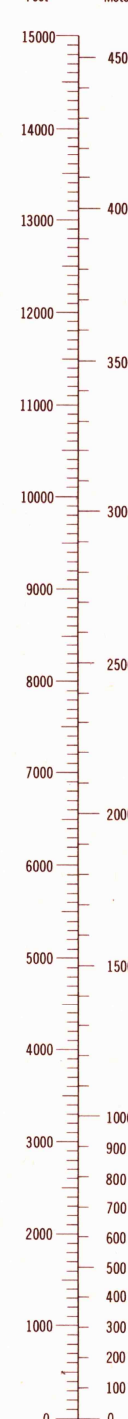
COMMONWEALTH OF MASSACHUSETTS
DEPARTMENT OF PUBLIC WORKS

TEMPLETON QUADRANGLE
MASSACHUSETTS—WORCESTER CO.
7.5 MINUTE SERIES (TOPOGRAPHIC)

6569 II SE
WACHUSETT MOUNTAIN



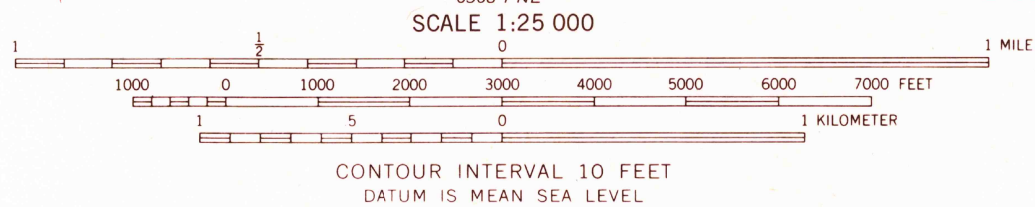
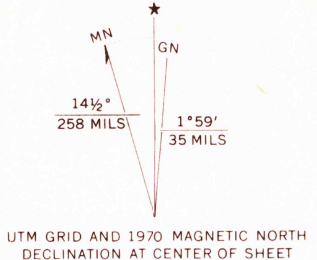
CONVERSION
SCALES



Feet	Meters
1	3048
2	6096
3	9144
4	12192
5	15240
6	18288
7	21336
8	24384
9	27432
10	30480

To convert feet to meters
multiply by 3.048
To convert meters to feet
multiply by 3.2808

Mapped, edited, and published by the Geological Survey
Control by USGS, USC&GS, and Massachusetts Geodetic Survey
Planimetry by photogrammetric methods from aerial photographs
taken 1939. Topography by planimetric surveys 1943 and 1944
Revised from aerial photographs taken 1968. Field checked 1970
Polyconic projection. 1927 North American datum
10,000-foot grid based on Massachusetts coordinate system,
mainland zone
1000-meter Universal Transverse Mercator grid,
zone 18
Fine red dashed lines indicate selected fence and field lines where
generally visible on aerial photographs. This information is unchecked
Red tint indicates areas in which only landmark buildings are shown
Areas covered by dashed light-blue pattern are subject to controlled
inundation by Birch Hill Dam



THIS MAP COMPLIES WITH NATIONAL MAP ACCURACY STANDARDS
FOR SALE BY U.S. GEOLOGICAL SURVEY, RESTON, VIRGINIA 22092
A FOLDER DESCRIBING TOPOGRAPHIC MAPS AND SYMBOLS IS AVAILABLE ON REQUEST



ROAD CLASSIFICATION	
Primary highway, all weather, hard surface	Light-duty road, all weather, improved surface
Secondary highway, all weather, hard surface	Unimproved road, fair or dry weather
U. S. Route	State Route

TEMPLETON, MASS.
N4230—W7200/7.5

USGS
Historical File
Topographic Division
1970
AMS 6569 II SE—SERIES V814

APR 23 1978

2700