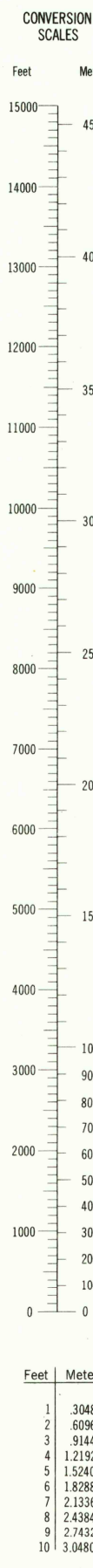
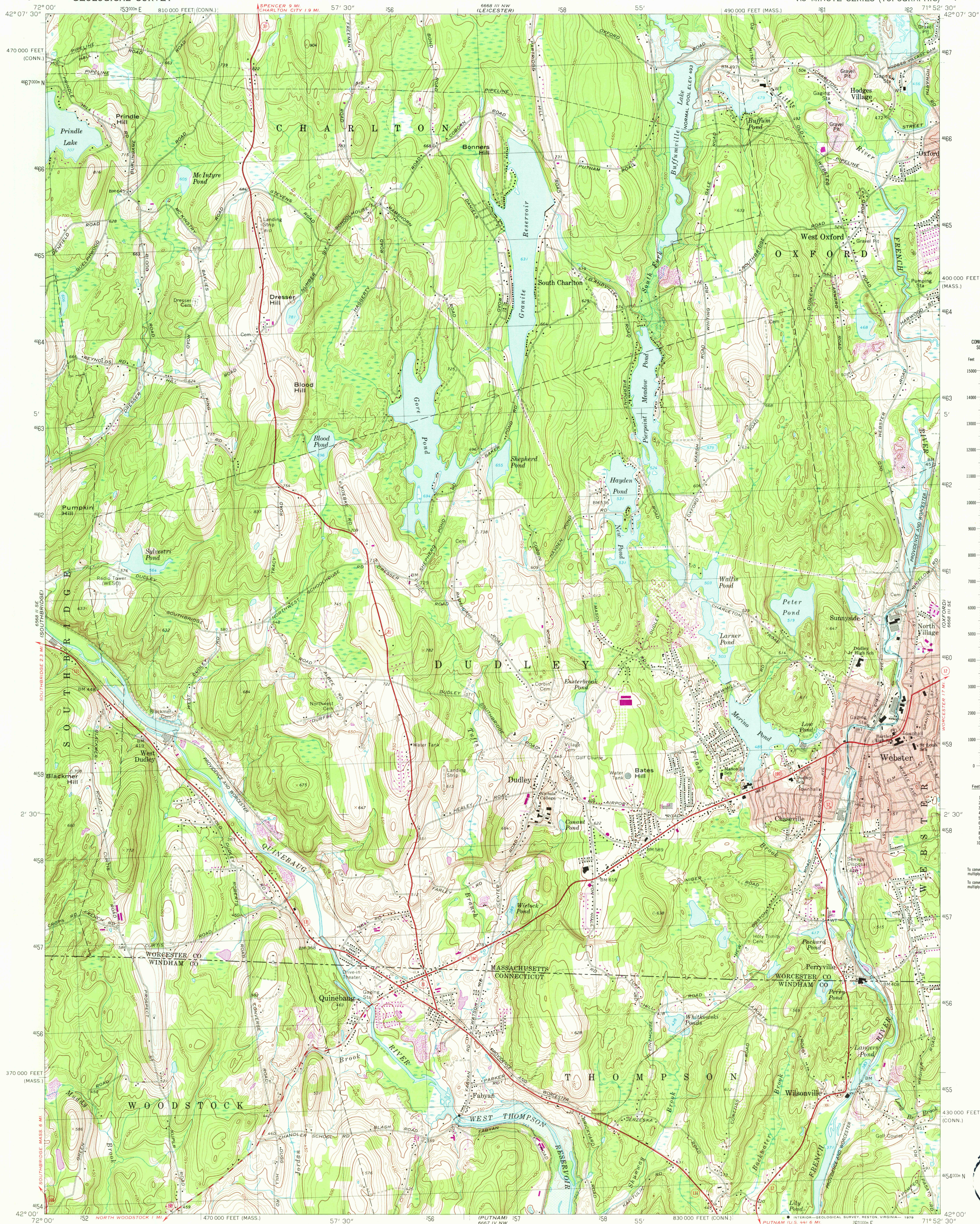


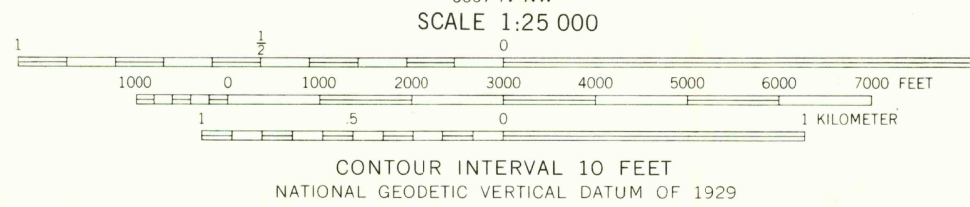
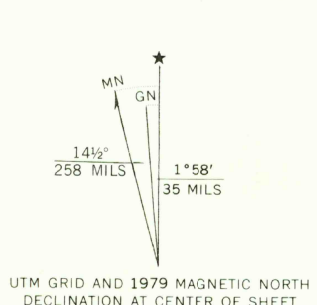
UNITED STATES
DEPARTMENT OF THE INTERIOR
GEOLOGICAL SURVEY

COMMONWEALTH OF MASSACHUSETTS
DEPARTMENT OF PUBLIC WORKS

WEBSTER QUADRANGLE
MASSACHUSETTS-CONNECTICUT
7.5 MINUTE SERIES (TOPOGRAPHIC)



Mapped, edited, and published by the Geological Survey
Control by USGS, USC&GS, and Massachusetts Geodetic Survey
Topography by planetable surveys 1942-1943. Revised from aerial
photographs taken 1966. Field checked 1969
Polyconic projection. 1927 North American datum
10,000-foot grids based on Massachusetts coordinate system,
mainland zone, and Connecticut coordinate system
1000-meter Universal Transverse Mercator grid,
zone 19
Fine red dashed lines indicate selected fence and field lines where
generally visible on aerial photographs. This information is unchecked
Red tint indicates areas in which only landmark buildings are shown
Areas covered by dashed light-blue pattern
are subject to controlled inundation



ROAD CLASSIFICATION

Primary highway, all weather, hard surface	Light-duty road, all weather, improved surface
Secondary highway, all weather, unimproved road, fair or dry hard surface	weather

State Route

WEBSTER, MASS.-CONN.
N4200-W7152.5/7.5
1969
PHOTOREVISED 1979
AMS 6668 III SW-SERIES V814

THIS MAP COMPLIES WITH NATIONAL MAP ACCURACY STANDARDS
FOR SALE BY U. S. GEOLOGICAL SURVEY, RESTON, VIRGINIA 22092
A FOLDER DESCRIBING TOPOGRAPHIC MAPS AND SYMBOLS IS AVAILABLE ON REQUEST

Revisions shown in purple compiled in cooperation with the State of
Massachusetts agencies from aerial photographs taken 1975 and other
source data. This information not field checked. Map edited 1979

USGS NHD HISTORICAL MAP
REC'D FILE COPY

MAP 1-1969

1950