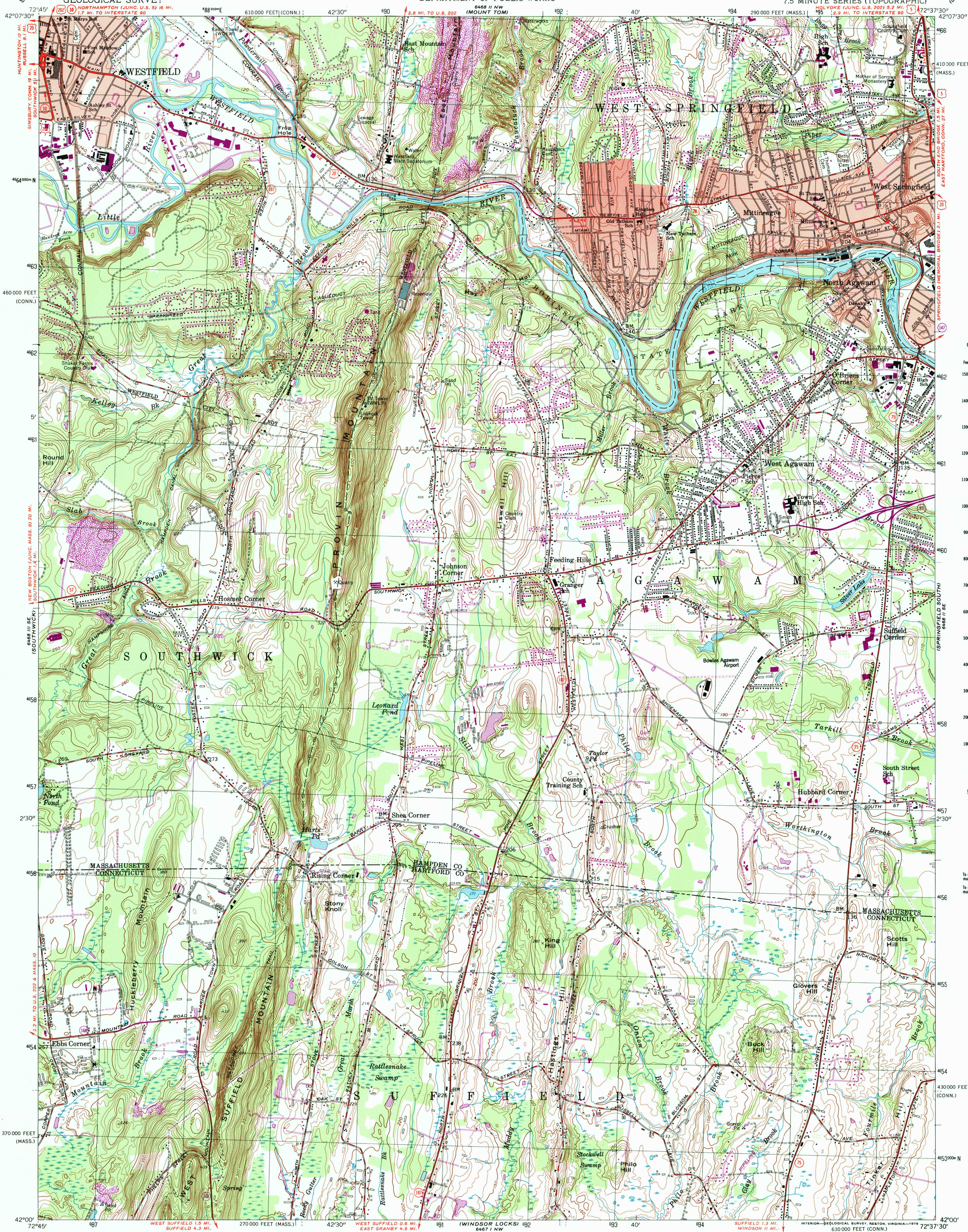


UNITED STATES
DEPARTMENT OF THE INTERIOR
GEOLOGICAL SURVEY

STATE OF MASSACHUSETTS
DEPARTMENT OF PUBLIC WORKS

WEST SPRINGFIELD QUADRANGLE
MASSACHUSETTS-CONNECTICUT
7.5 MINUTE SERIES (TOPOGRAPHIC)



CONVERSION
SCALES

Feet	Meters
15000	4500
14000	4200
13000	4000
12000	3700
11000	3400
10000	3100
9000	2800
8000	2500
7000	2200
6000	1900
5000	1600
4000	1300
3000	1000
2000	700
1000	300
500	150
0	0

To convert feet to meters
multiply by .3048
To convert meters to feet
multiply by 3.2808

Feet	Meters
1	.3048
2	.6096
3	.9144
4	1.2192
5	1.5240
6	1.8288
7	2.1336
8	2.4384
9	2.7432
10	3.0480

Mapped, edited, and published by the Geological Survey

Control by USGS, USC&GS, Massachusetts Geodetic Survey,
Massachusetts Harbor and Land Commission, and
Connecticut Geodetic Survey

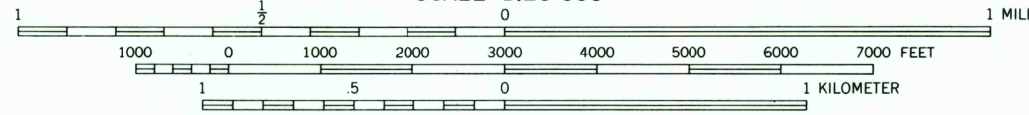
Topography by planetable surveys 1933 and 1942-1943
Culture revised from aerial photographs by photogrammetric
methods. Aerial photographs taken 1957. Field check 1958

Polyconic projection. 1927 North American datum
10,000-foot grids based on Massachusetts coordinate system,
mainland zone, and Connecticut coordinate system
1000-meter Universal Transverse Mercator grid,
zone 18

Red tint indicates areas in which only
landmark buildings are shown

There may be private inholdings within the boundaries of
the National or State reservations shown on this map

SCALE 1:25 000



CONTOUR INTERVAL 10 FEET
NATIONAL GEODETIC VERTICAL DATUM OF 1929

THIS MAP COMPLIES WITH NATIONAL MAP ACCURACY STANDARDS

FOR SALE BY U. S. GEOLOGICAL SURVEY

DENVER, COLORADO 80225, OR RESTON, VIRGINIA 22092

A FOLDER DESCRIBING TOPOGRAPHIC MAPS AND SYMBOLS IS AVAILABLE ON REQUEST

Revisions shown in purple compiled in cooperation with State of
Massachusetts agencies from aerial photographs taken 1977 and other
source data. This information not field checked. Map edited 1979

ROAD CLASSIFICATION

Heavy-duty ——— Light-duty ———
Medium-duty ——— Unimproved dirt ———

U. S. Route ——— State Route ———

WEST SPRINGFIELD, MASS.—CONN.

N 4200—W 7237.5/7.5

1958
PHOTOREVISED 1979
AMS 6468 II SW—SERIES V814

USGS AND HISTORICAL
MAP ARCHIVES

JUN 15 1995

REC'D FILE COPY

ISBN 0-607-00284-0

