

72°52'30"
42°37'30"

NORTH ADAMS 19 MI.
CHARLEMONT 1 MI.

50'

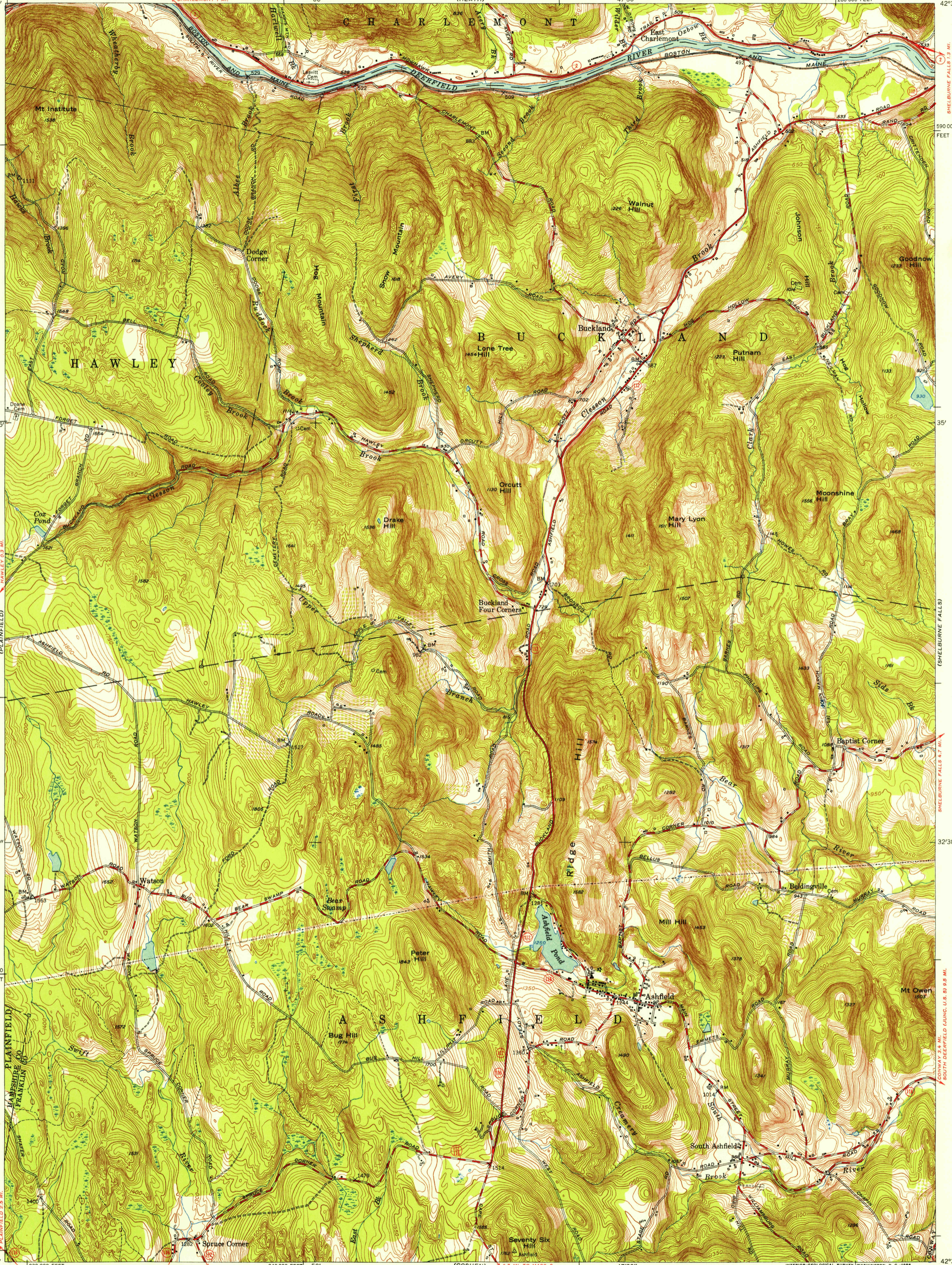
(HEATH)
HEATH 3.7 MI.

47'30"

1260 000 FEET

72°45'

42°37'30"

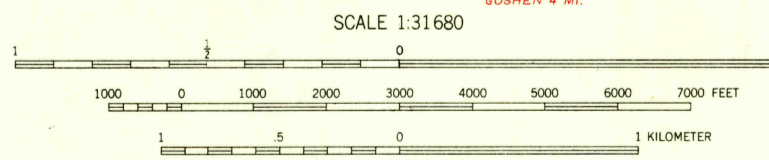


U.S.G.S.
FILE COPY
TOPOGRAPHIC DIVISION

U.S.G.S.
FILE COPY
TOPOGRAPHIC DIVISION

Mapped, edited, and published by the Geological Survey
Control by USGS, USC&GS, and Mass. Land & Harbor Commission
Topography by planetable surveys 1940. Revised 1955
Polyconic projection. 1927 North American datum
10,000-foot grid based on Massachusetts (Mainland)
coordinate system

14°
TRUE NORTH
MAGNETIC NORTH
APPROXIMATE MEAN
DECLINATION, 1955



CONTOUR INTERVAL 10 FEET
DATUM IS MEAN SEA LEVEL

USGS
Historical File
Topographic Division

ROAD CLASSIFICATION
Heavy-duty ——— Light-duty ———
Medium-duty ——— Unimproved dirt ———
U. S. Route State Route



QUADRANGLE LOCATION

ASHFIELD, MASS.
N 4230—W 7245/7.5

1955

SEP 14 1956

1065