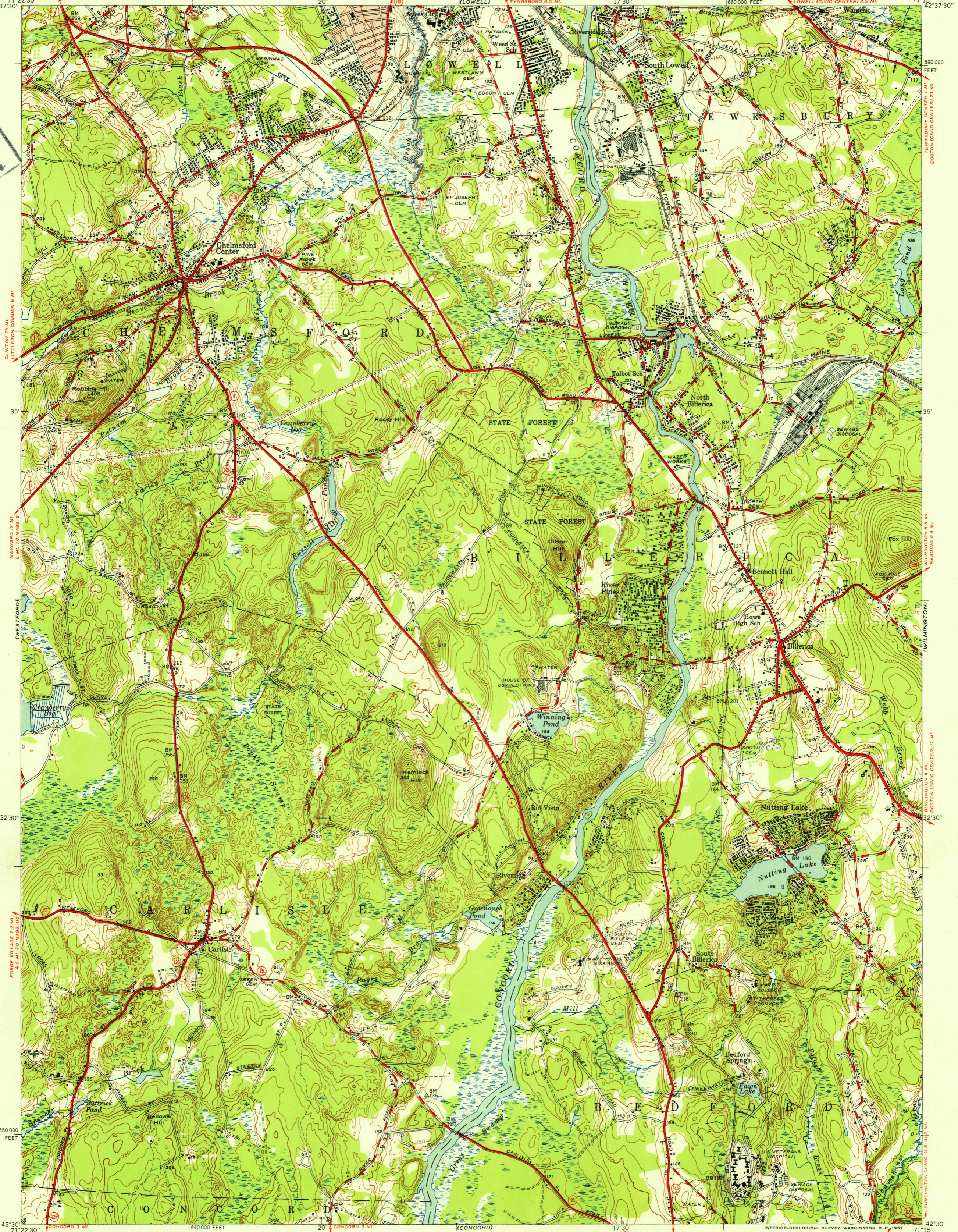
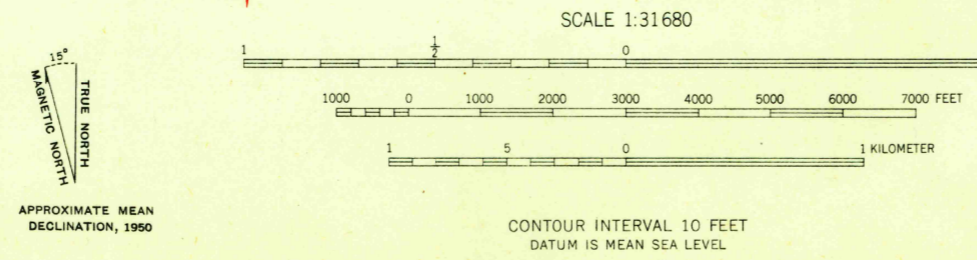


U.S.G.S.  
FILE COPY  
Inspection and Editing



Mapped, edited, and published by the Geological Survey  
Control by USC&GS, Mass. Geodetic Survey, and  
Mass. Dept. of Public Works  
Culture and drainage in part compiled from aerial photographs  
surveyed in 1939. Revised in 1950  
Polyconic projection. 1927 North American datum  
10,000-foot grid based on Massachusetts (Mainland)  
coordinate system  
Red tint indicates area in which only  
landmark buildings are shown



ROAD CLASSIFICATION  
HARD-SURFACE ALL WEATHER ROADS DRY WEATHER ROADS  
Heavy-duty 4 LANE LANE Improved dirt  
Medium-duty 4 LANE LANE Unimproved dirt  
U. S. Route State Route

USGS  
Historical File  
Topographic Division

BILLERICA, MASS.  
N4230-W7115/7.5  
1950

CONTOUR INTERVAL 10 FEET  
DATUM IS MEAN SEA LEVEL  
FOR SALE BY U. S. GEOLOGICAL SURVEY, WASHINGTON 25, D. C.  
A FOLDER DESCRIBING TOPOGRAPHIC MAPS AND SYMBOLS IS AVAILABLE ON REQUEST

U.S.G.S.  
FILE COPY  
Inspection and Editing

NOV 24 1952  
32 25