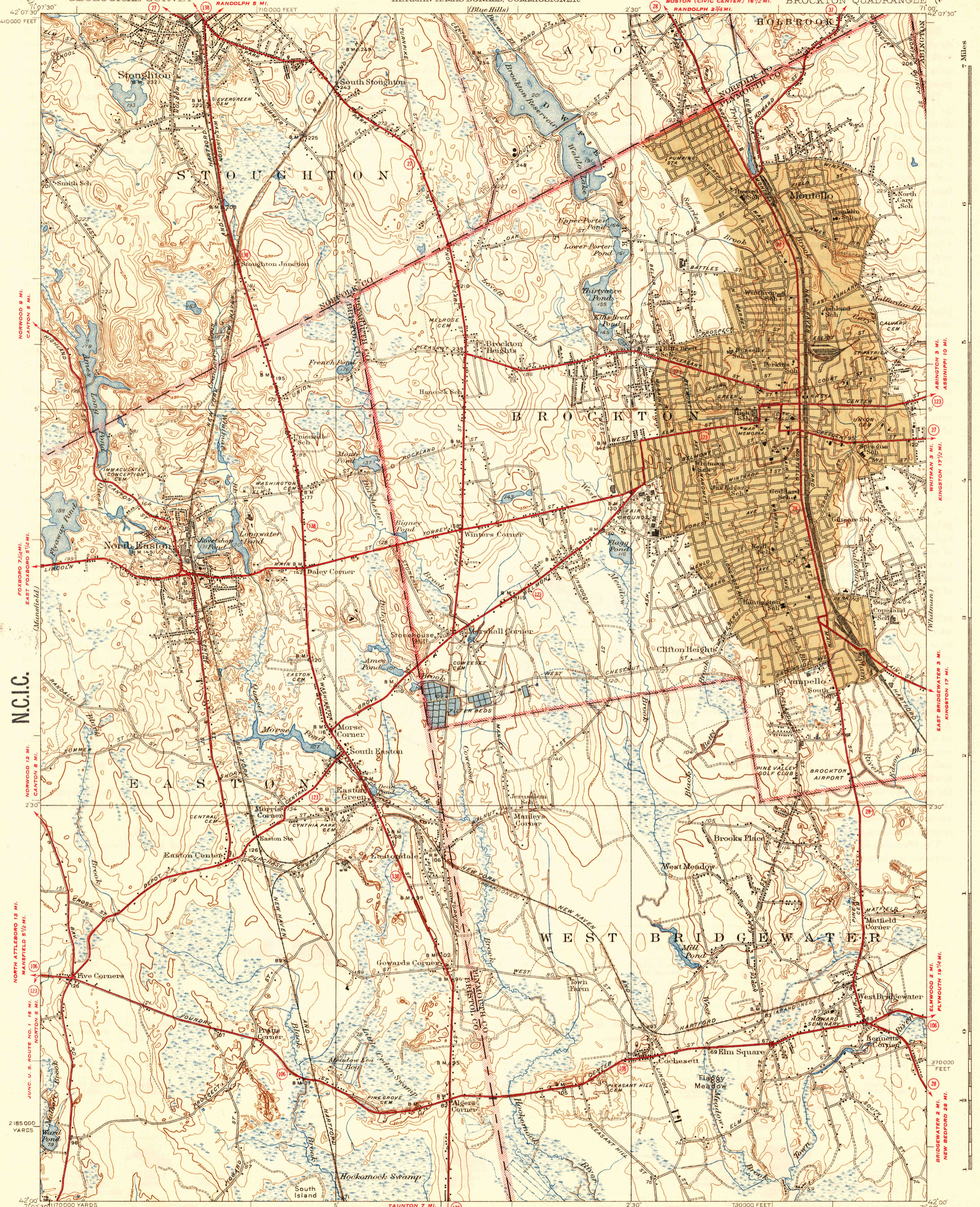


JUNC. U. S. ROUTE NO. 1 7 1/2 MI. BOSTON (CIVIC CENTER) 17 1/2 MI.
SHARON 4 1/2 MI. UNITED STATES POKKAPOG 4 3/4 MI.
DEPARTMENT OF THE INTERIOR
GEOLOGICAL SURVEY

STATE OF MASSACHUSETTS
DEPARTMENT OF PUBLIC WORKS
HERMAN A. MAC DONALD, COMMISSIONER

BRAINTREE 7 MI.
HOLBROOK 2 MI.
MASSACHUSETTS
BROCKTON QUADRANGLE



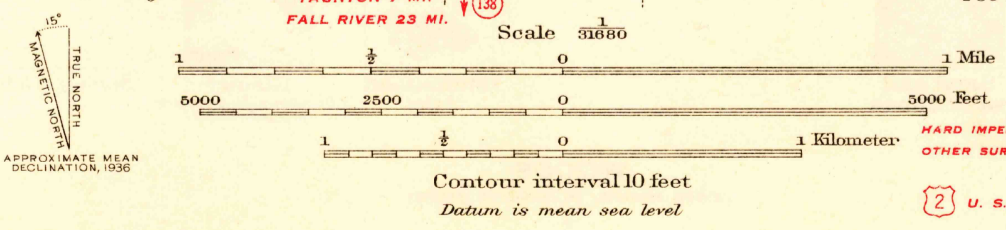
FILE COPY
JUL 9 1976

N.C.I.C.

Topography by W.F. Chensault, H.B. Smith,
J.G. Groninger, and G.F. Westinghouse
Culture and drainage in part compiled from aerial photographs
Surveyed in 1936

Gray tint indicates areas in which only
landmark buildings are shown

WINNICONNET 1 1/2 MI.
TAUNTON 7 1/2 MI.



Polycyclic projection, 1927 North American datum
5000 yard grid based on U.S. zone system, A
10000 foot grid based on Massachusetts (Mainland)
rectangular coordinate system

ROUTES USUALLY TRAVELED
HARD SUPERVISED SURFACES
OTHER SURFACE IMPROVEMENTS
1941
U. S. ROUTE
Historical File
Topographic Division

BROCKTON, MASS.
Edition of 1941
N4200-W100/15