

FILE COPY

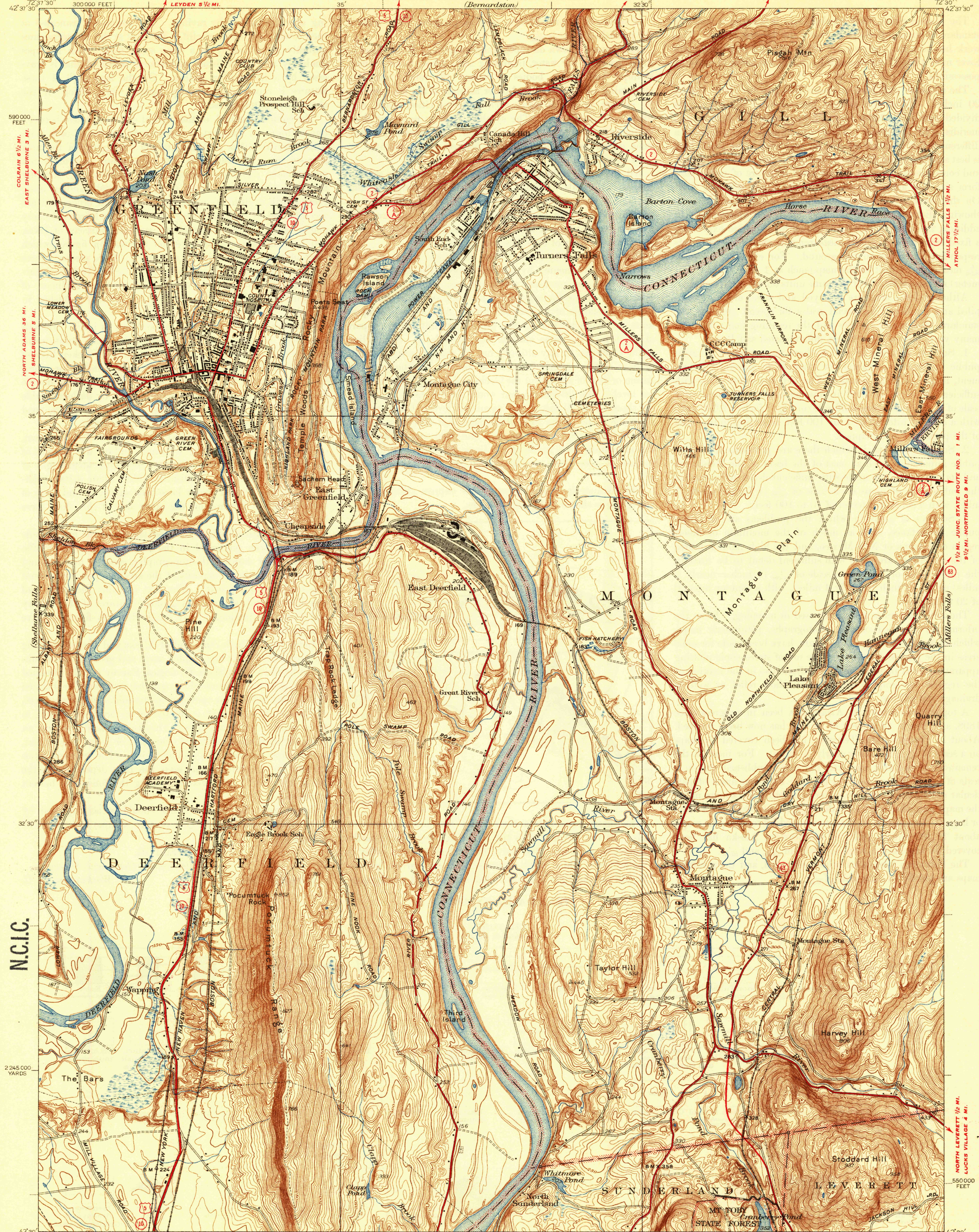
JUL 9 1976

N.C.I.C.

UNITED STATES
DEPARTMENT OF THE INTERIOR
GEOLOGICAL SURVEY BEAVER MEADOW 7 MI.

BRATTLEBORO 17 MI. STATE OF MASSACHUSETTS
BERNARDSTON 3 1/2 MI. DEPARTMENT OF PUBLIC WORKS
HERMAN A. MACDONALD, COMMISSIONER
(Bernardston)

NORTHFIELD 7 MI. MASSACHUSETTS
GILL 1 3/4 MI. (FRANKLIN COUNTY)
GREENFIELD QUADRANGLE



Topography by A.J. Ogle, R.L. McCammon,
R.H. Runyan, and Crawford Dickey.
Culture and drainage in part
compiled from aerial photographs
Surveyed in 1936

SUNDERLAND 3 MI. Scale 1:62,500
HADLEY 12 1/2 MI. (8)
NORTH AMHERST 6 1/2 MI.
AMHERST 9 MI.

1941
USGS
Historical File
Topographic Division
GREENFIELD, MASS.
Edition of 1941
N 4230-W 7230/75

USGS
Historical File
Topographic Division
GREENFIELD, MASS.
Edition of 1941
N 4230-W 7230/75