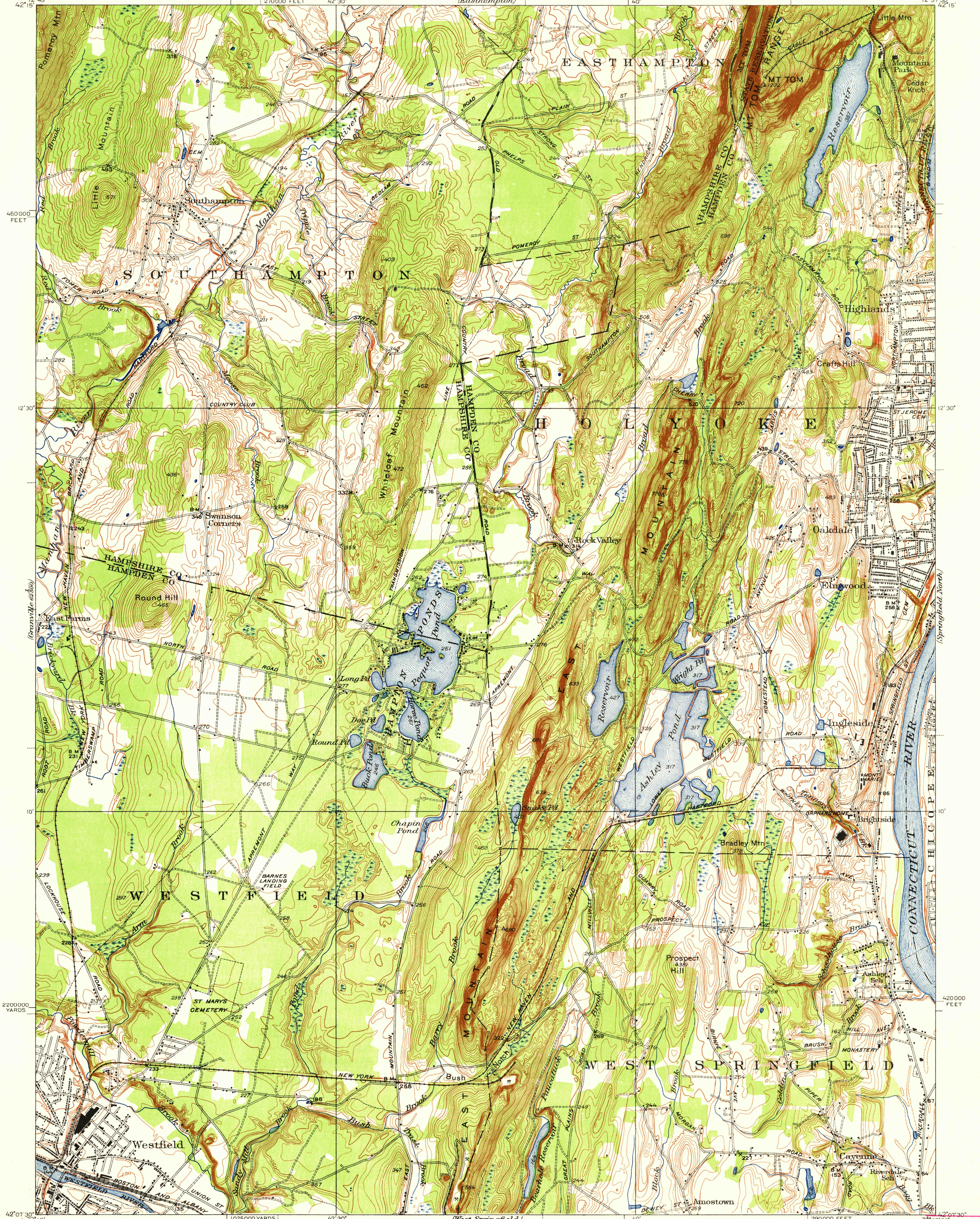


(Cherryfield)
42° 12' 45"
42° 15'

UNITED STATES
DEPARTMENT OF THE INTERIOR
GEOLOGICAL SURVEY

MASSACHUSETTS
MT. TOM QUADRANGLE

(Mt. Holyoke)
42° 15'



(Granville)
42° 01' 30"
42° 00'

Topography by Frank Lamer and F.H. Sargent
Surveyed in 1934

APPROXIMATE MEAN
DECLINATION 1934



Polyconic projection, 1927 North American datum
5000 yard grid based on U.S. zone system. A
10000 foot grid based on Massachusetts
rectangular coordinate system
REPRODUCED BY THE 30TH ENGINEER BN. (TOP)
UNDER A. M. S. P. O. 21884

MT. TOM, MASS.
Edition of 1938

N4207.5-W7237.5/75 Class

U. S. BOARD OF
GEOGRAPHICAL NAMES

Accession
M6300 1st

830-USGS
Mass.: Mt. Tom.

Date