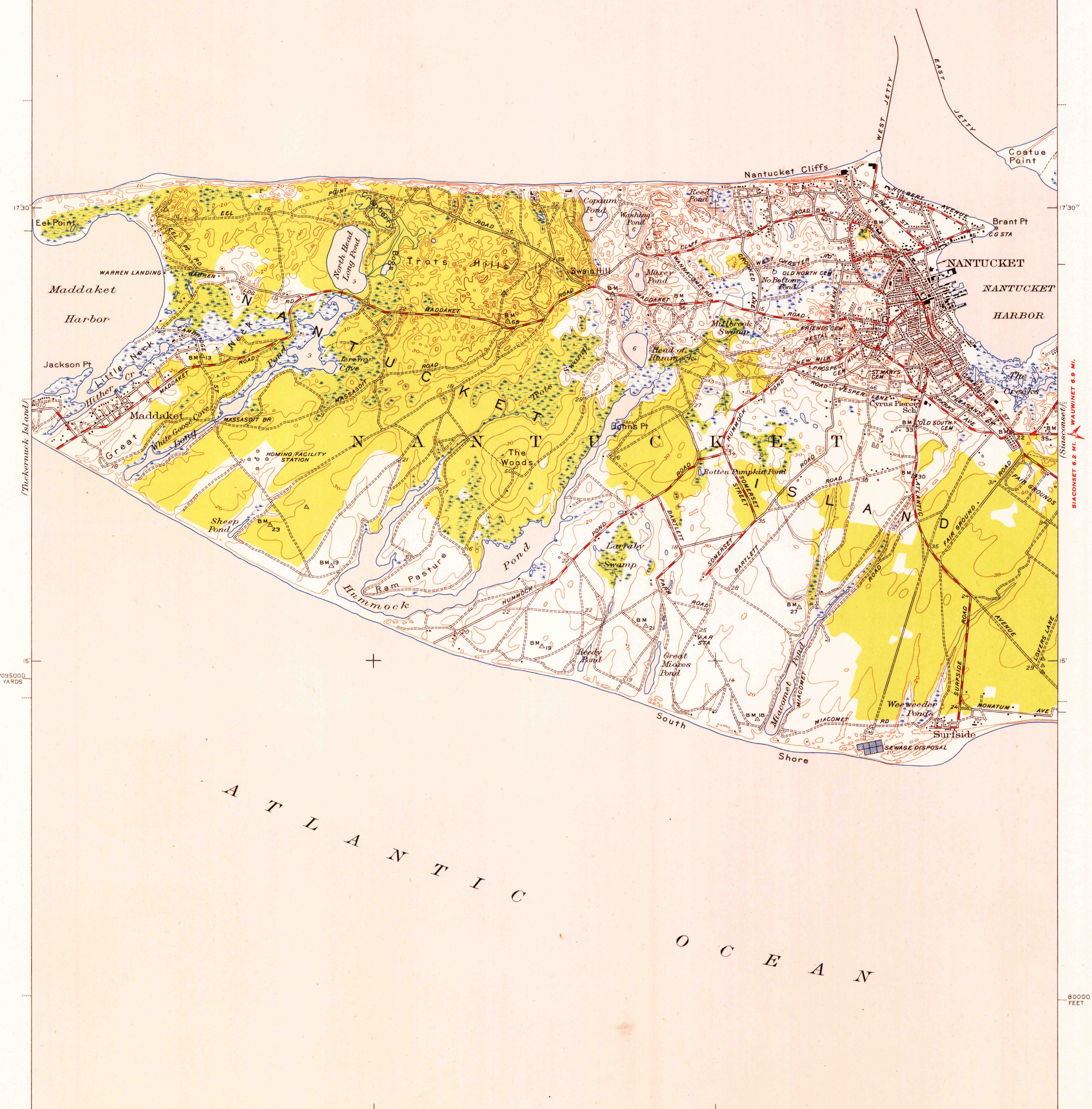


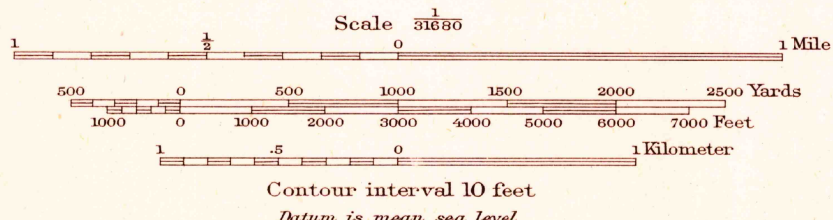
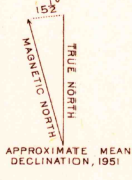
U.S.G.S.
FILE COPY
Inspection and Editing

NANTUCKET SOUND



Topography by R.J. Belton,
H.G. Warner, and F.E. Russell
Surveyed in 1943
Revised in 1951

ROAD CLASSIFICATION
Heavy-duty ——— 4 LANE 16 LANE Light-duty ———
Medium-duty ——— 4 LANE 16 LANE Unimproved dirt ———
U.S. Route State Route



USGS
Historical File
Topographic Division

Polyconic projection, 1927 North American datum
5000 yard grid based on U.S. zone system, A
10000 foot grid based on Massachusetts (Island)
rectangular coordinate system

NANTUCKET, MASS.
N412.5-W7005.7.5

1951

RETURN TO:
USGS NMD HISTORICAL MAP ARCHIVES

FOR SALE BY U.S. GEOLOGICAL SURVEY, WASHINGTON 25, D. C.
A FOLDER DESCRIBING TOPOGRAPHIC MAPS AND SYMBOLS IS AVAILABLE ON REQUEST

U.S.G.S.
FILE COPY
Inspection and Editing

NOV 12 1952

2110