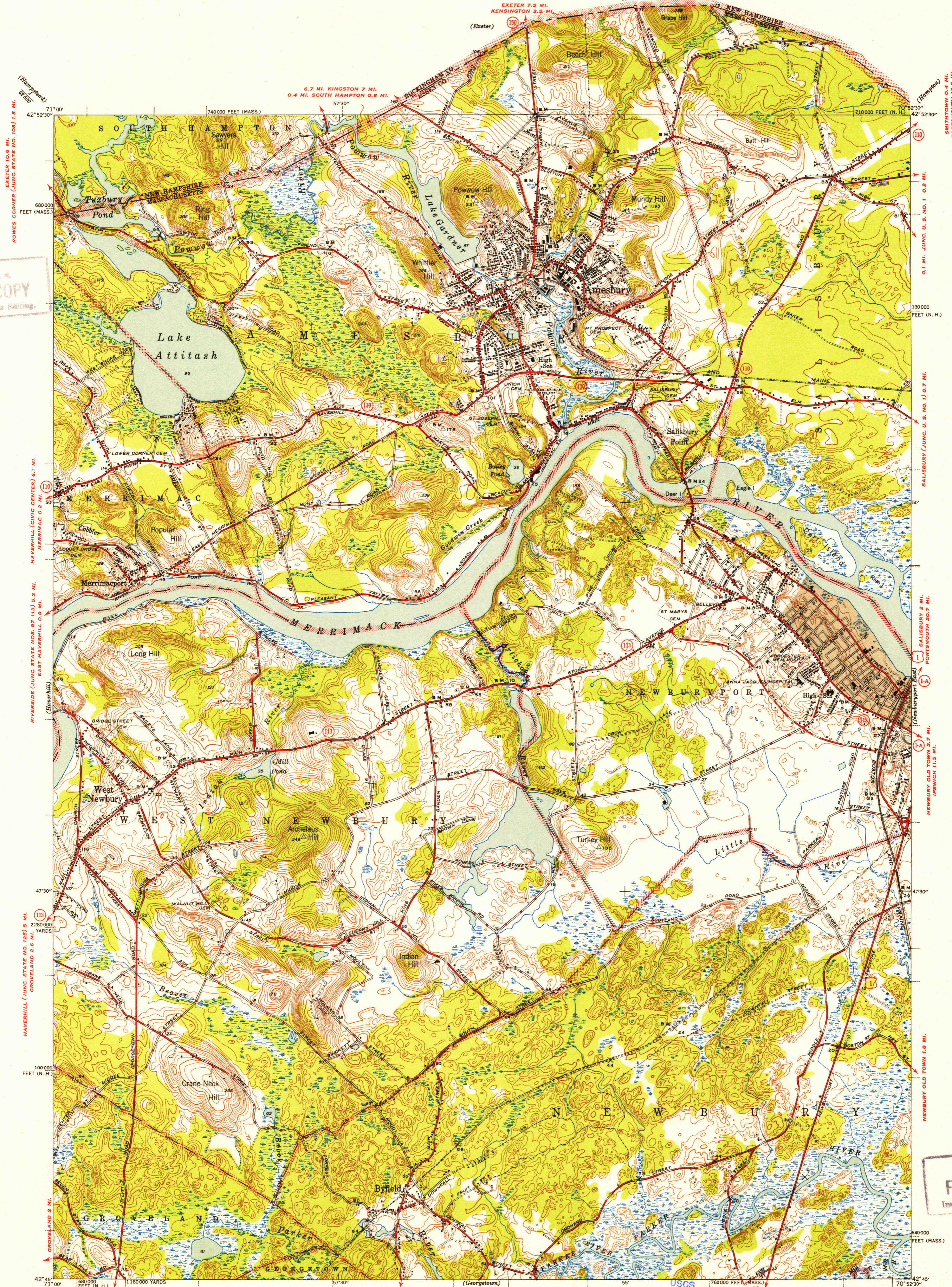


U.S.G.S.
FILE COPY
Inspection and Rating

U.S.G.S.
FILE COPY
Inspection and Rating



Mapped by the Geological Survey
1942

Gray tint indicates area in which
only landmark buildings are shown.
GEORGETOWN 1.8 MI.
TOPSFIELD (JUNC. U. S. NO. 1) 9.1 MI.

SCALE 1:31680
WEST BOXFORD 7.1 MI.
GEORGETOWN 3 MI.

SCALE 1:31680
WEST BOXFORD 7.1 MI.
GEORGETOWN 3 MI.

USGS
Historical Files
Topographic Division

Polyconic projection. 1927 North American datum
5000 yard grid based on U. S. zone system, A
10000 foot grids based on Massachusetts (Mainland)
and New Hampshire rectangular coordinate systems

NEWBURYPORT WEST, MASS.-N.H.
Edition of 1944
N4245-W7052.7/7.5

ROAD CLASSIFICATION
1944
Dependable hard surface
heavy duty road
Secondary hard surface
all weather road
Dry weather roads
Loose-surface, graded
Unsurfaced, graded
Dirt road
U. S. Route 118
State Route 26
More than two lanes indicated along road with tick at point of change - 2 LANE 2 LANE

Contour interval 20 feet
Datum is mean sea level

APPROXIMATE MEAN
DECLINATION, 1942

SEP 16 1952

Lidover

1580