

UNITED STATES
DEPARTMENT OF THE INTERIOR
GEOLOGICAL SURVEY

WAR DEPARTMENT
CORPS OF ENGINEERS, U.S. ARMY
(Worcester South)

MASSACHUSETTS-CONNECTICUT-RHODE ISLAND
OXFORD QUADRANGLE
7 1/2-MINUTE SERIES

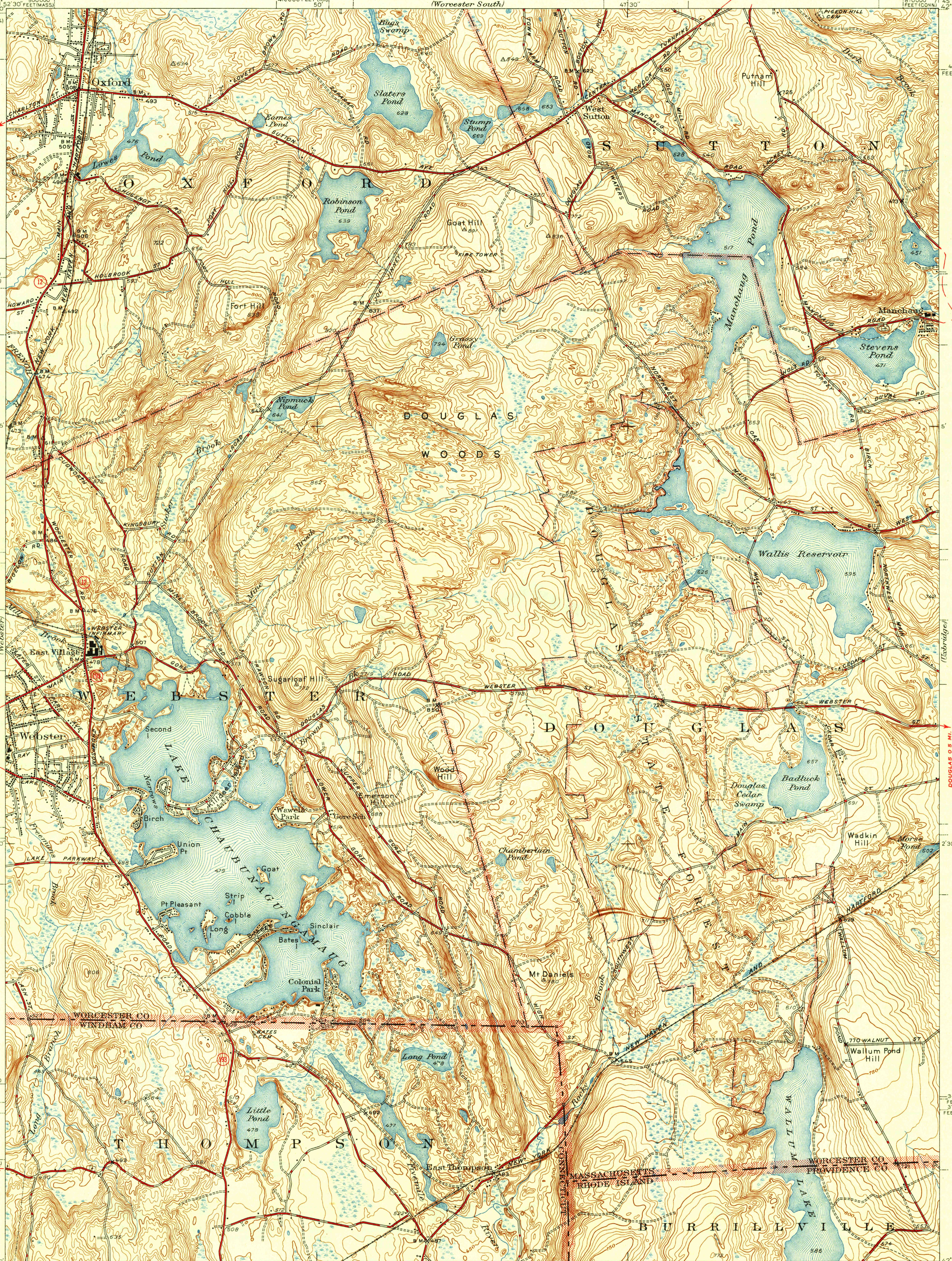
NORTH WOODSTOCK (JUNC. STATE NO. 83) 7.6 MI.
PUTNAM 11.2 MI.
NORTH GROSVENDALE 5.3 MI.
PENNYVILLE (STATE LINE) 2.2 MI.

WORCESTER (CIVIC CENTER) 12.6 MI.
JUNC. U. S. NO. 20 4 MI.

DUDLEY 5.8 MI.
WEST OXFORD 1.2 MI.

WILSONVILLE (JUNC. STATE NO. 12) 0.8 MI.

WATKINSVILLE 4.5 MI.
WORCESTER (CIVIC CENTER) 20.4 MI.

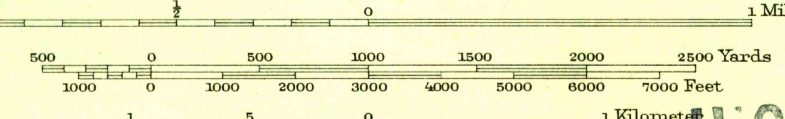


Map by the Geological Survey
1942-1943

THOMPSON 3.3 MI.
PUTNAM 7.7 MI.

JUNC. STATE NO. 193 2.3 MI.
THOMPSON 3.9 MI.

Scale 1:62,500



ROAD CLASSIFICATION
1946
Dependable hard-surface
heavy-duty road
Secondary hard-surface
all-weather road
Dirt road
Dry weather roads
Loose-surface graded
Unsurfaced graded
Dirt road
U.S. Route 1A
State Route 12
More than two lanes indicated along road with tick at point of change

Contour interval 10 feet
Datum is mean sea level

Polyconic projection, 1927 North American datum
5000 yard grid based on U.S. zone system A
10000 foot grids based on Massachusetts
(Mainland), Connecticut and Rhode Island
rectangular coordinate systems

OXFORD, MASS.-CONN.-R.I.
Edition of 1946
N4200-W7145/75

HISTORICAL FILES
(DO NOT REMOVE)