

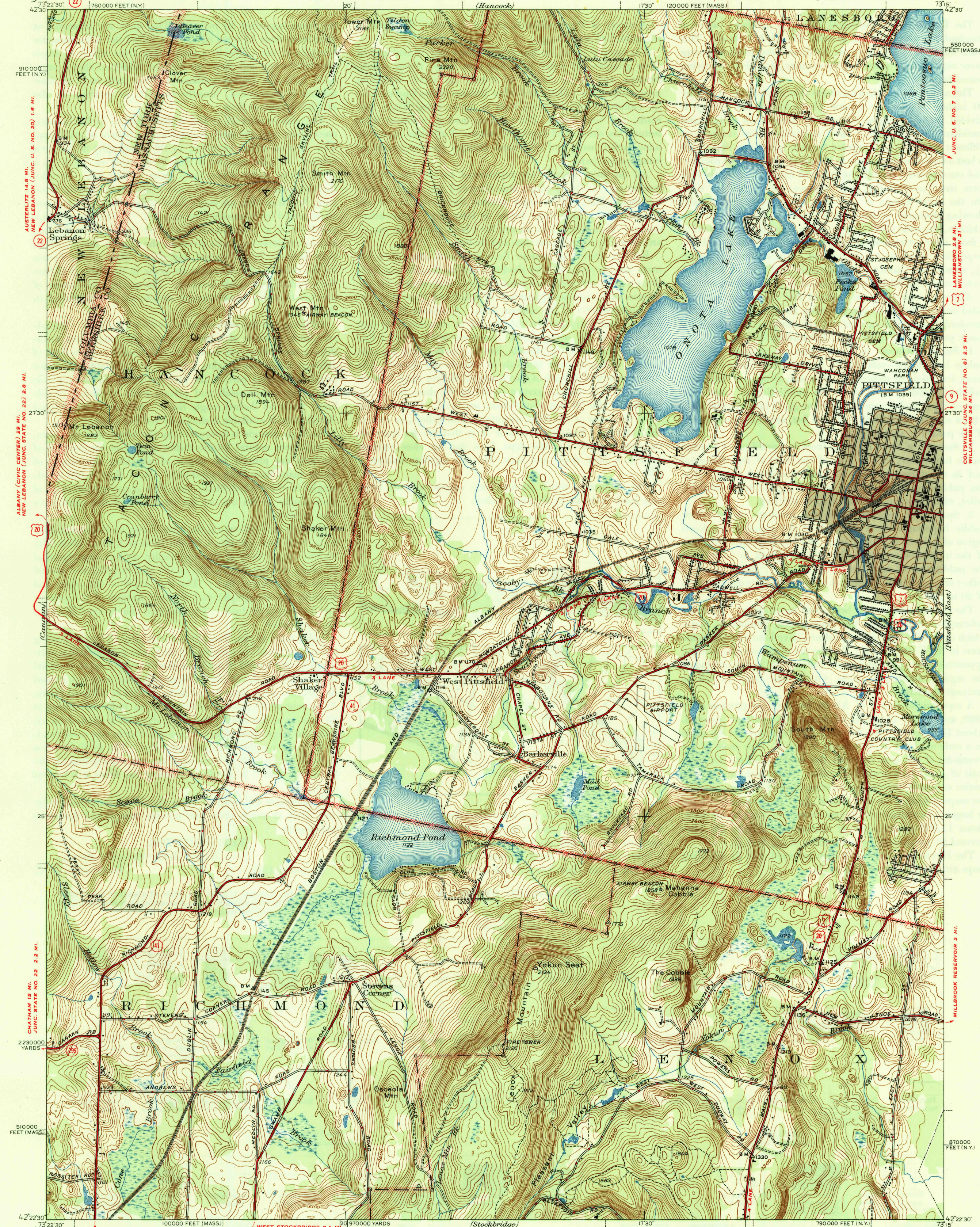
U.S.G.S.  
FILE COPY  
Inspection and Editing

UNITED STATES  
DEPARTMENT OF THE INTERIOR  
GEOLOGICAL SURVEY

WAR DEPARTMENT  
CORPS OF ENGINEERS, U.S. ARMY

STATE OF MASSACHUSETTS  
DEPARTMENT OF PUBLIC WORKS  
JOSEPH F. CAIRNES, COMMISSIONER

MASSACHUSETTS-NEW YORK  
PITTSFIELD WEST QUADRANGLE  
7 1/2-MINUTE SERIES



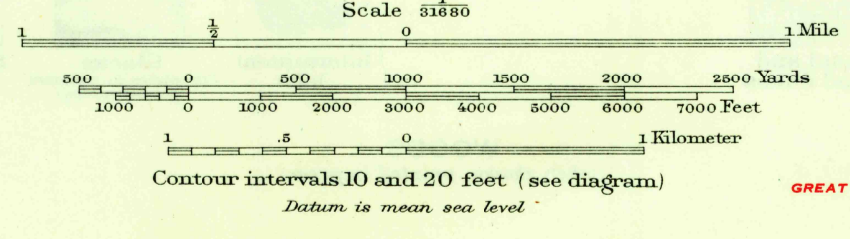
Maped by the Geological Survey  
1943-1944

Gray tint indicates areas in which  
only landmark buildings are shown

ROAD CLASSIFICATION  
1946  
Dependable hard-surface  
heavy-duty road  
Secondary hard-surface  
all-weather road  
More than two lanes indicated along road with tick at point of change

ROAD CLASSIFICATION  
1946  
Dry weather road  
Loose-surface graded  
Unsurfaced, graded  
Dirt road

U.S. Route 15  
State Route 26



Polyconic projection, 1927 North American datum  
5000 yard grid based on U.S. zone system. A  
10000 foot grids based on Massachusetts (Mainland)  
and New York (East) rectangular coordinate systems

STOCKBRIDGE 7 MI.  
GREAT BARRINGTON 13 MI.  
HUNTINGTON 29 MI.  
PITTSFIELD WEST MASS.-N.Y.  
Edition of 1947  
N 42225-W 7315/75

USCS  
Historical File  
Topographic Division

JUN 20 1947

U.S.G.S.  
FILE COPY  
Inspection and Editing

4320