

U. S. G. S.
FILE COPY

UNITED STATES
DEPARTMENT OF THE INTERIOR
GEOLOGICAL SURVEY

WAR DEPARTMENT
CORPS OF ENGINEERS, U. S. ARMY

STATE OF MASSACHUSETTS
DEPARTMENT OF PUBLIC WORKS
WILLIAM H. BURACKER, COMMISSIONER

MASSACHUSETTS-VERMONT
ROWE QUADRANGLE
7 1/2-MINUTE SERIES

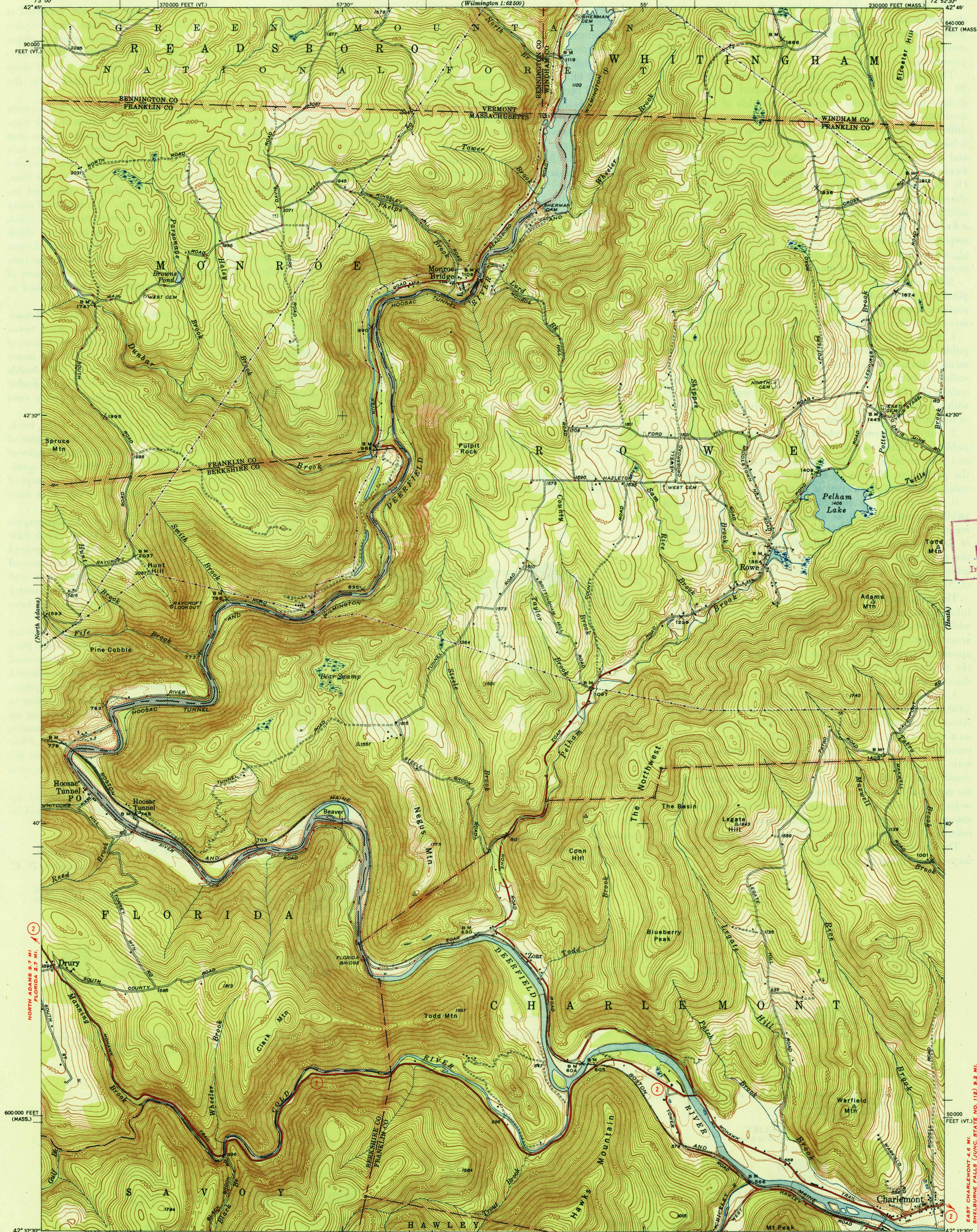
READSBORO (JUNC. STATE NO. 8) 2 MI.

(Wilmington 1:68500)

230000 FEET (MASS.)

(Wilmington 1:68500)

(Greenfield 1:68500)



U. S. G. S.
FILE COPY
Inspection and Editing.

NORTH ADAMS 9.7 MI.
FLORIDA 2.7 MI.

EAST CHARLEMONT 4.6 MI.
SHELBURNE FALLS (JUNC. STATE NO. 112) 8.2 MI.

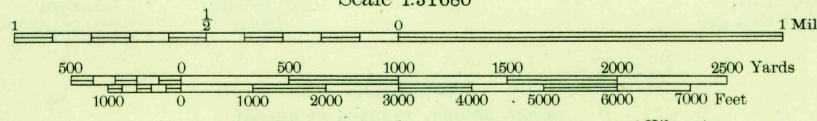
Mapped by the Geological Survey
1944

ROAD CLASSIFICATION
1947
Dependable hard-surface
heavy-duty road
Secondary hard-surface
all-weather road
More than two lanes indicated along road with tick at point of change

Dry weather roads
Loose-surface graded
Unsurfaced graded
Dirt road
U. S. Route
State Route

APPROXIMATE MEAN
DECLINATION, 1944

Scale 1:31680



Contour interval 20 feet
10 foot contours in dashed lines

USCS
Historical File
Topographic Division

U. S. G. S.
FILE COPY
Inspection and Editing.

Polyconic projection. 1927 North American datum
10000 foot grids based on Massachusetts (Mainland)
and Vermont rectangular coordinate systems

ROWE, MASS.-VT.
Edition of 1947

N4237.5-W7252.5/7.5

DEC 19 1947

4265