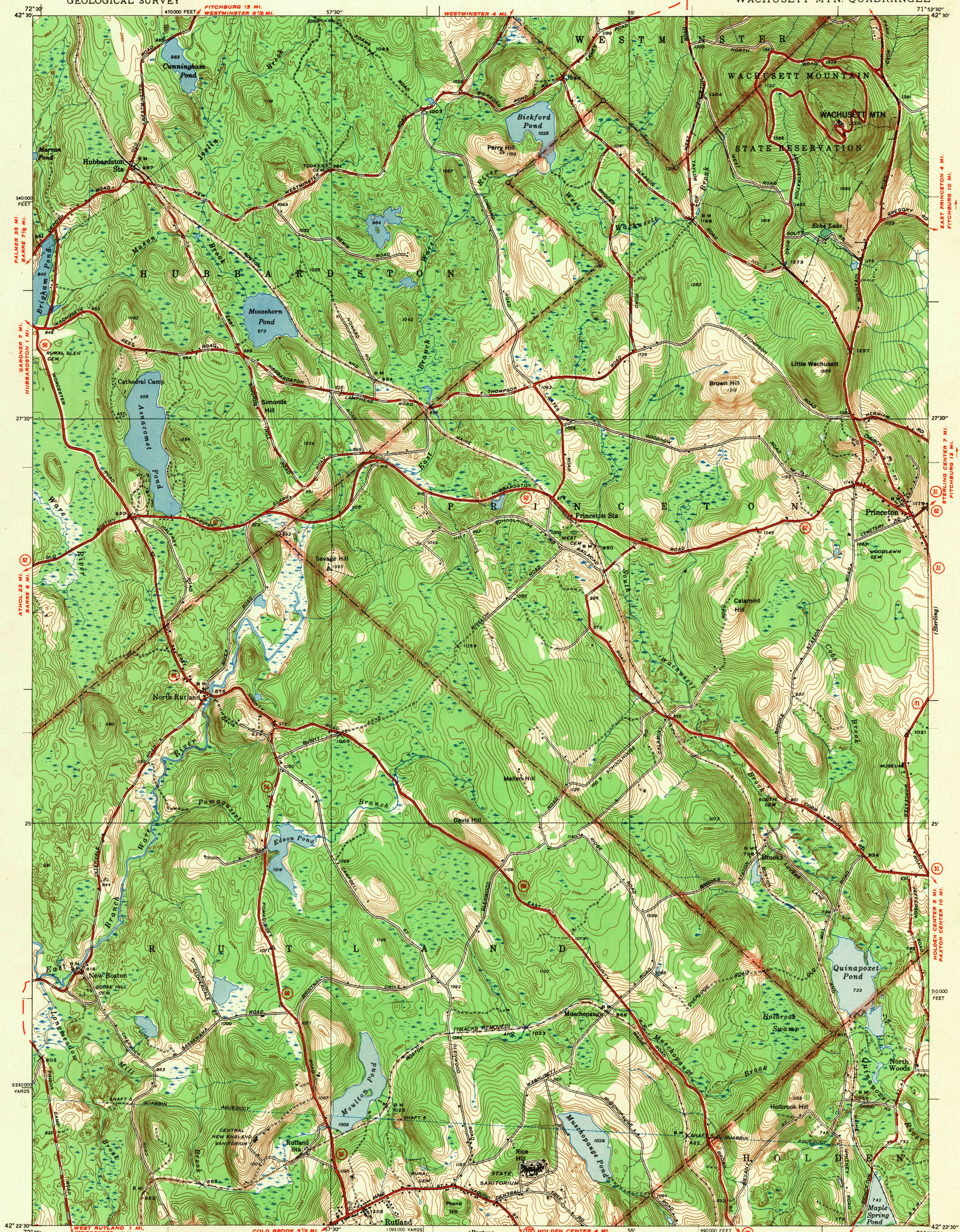


UNITED STATES
DEPARTMENT OF THE INTERIOR
GEOLOGICAL SURVEY

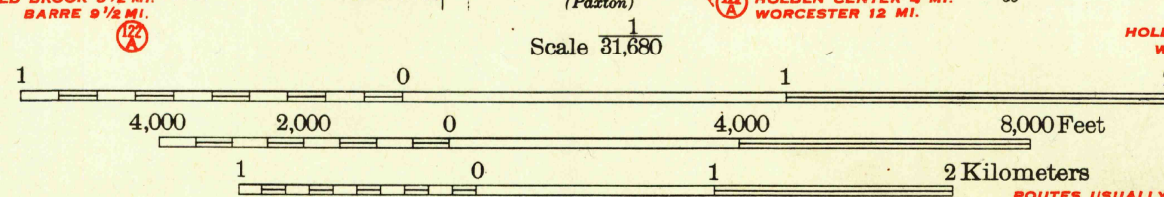
STATE OF MASSACHUSETTS
DEPARTMENT OF PUBLIC WORKS
JOHN W. BEAL, COMMISSIONER

WESTMINSTER 4 MI.
MASSACHUSETTS
(WORCESTER COUNTY)
WACHUSETT MTN. QUADRANGLE



Albert Pike, Division Engineer
Topography by C. S. Malby,
J. L. Watkins and B. J. Keating
Surveyed in 1938

TRUE NORTH
MAGNETIC NORTH
APPROXIMATE MEAN
DECLINATION, 1938



Contour interval 10 feet
Datum is mean sea level

HARD IMPERVIOUS SURFACES
OTHER SURFACE IMPROVEMENTS
1939
U. S. ROUTE
STATE ROUTE

RETURN TO:
NMD HISTORICAL MAP ARCHIVES
USGS NATIONAL CENTER, MS-522
RESTON, VA 22092

ARMY MAP SERVICE, U. S. ARMY, WASHINGTON, D. C. 105910
REPRINT OCTOBER 1942
Polyconic projection, 1927 North American datum
5000 yard grid based on U. S. zone system, A
10000 foot grid based on Massachusetts
rectangular coordinate system

WACHUSETT MTN. MASS.
U. S. BOARD ON
GEOGRAPHICAL NAMES

N 4222.5-W 7152.5

Class ...
Mass. Wachusett Mountain
Date ... 1943