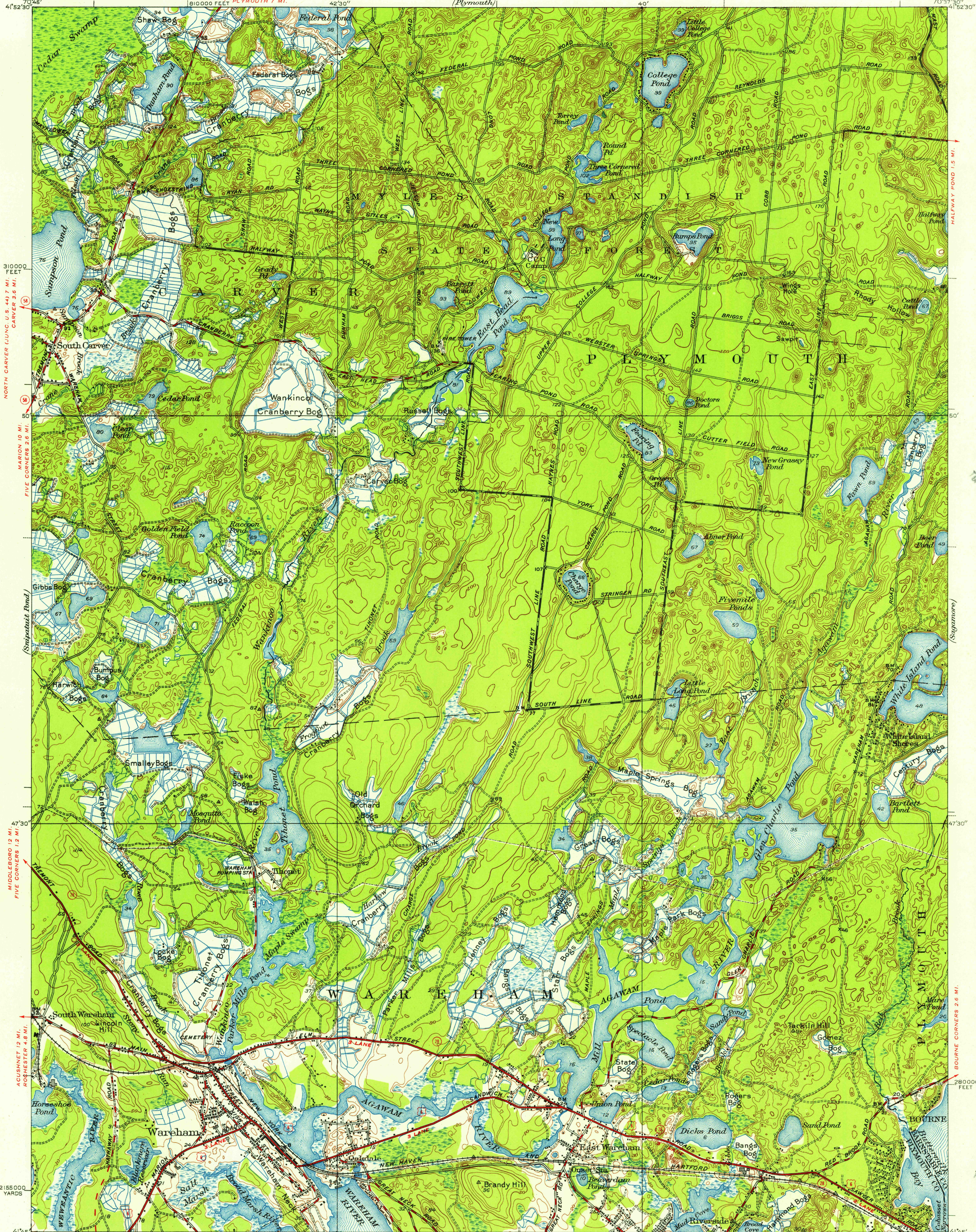


UNITED STATES
DEPARTMENT OF THE INTERIOR
GEOLOGICAL SURVEY

STATE OF MASSACHUSETTS
DEPARTMENT OF PUBLIC WORKS
(Plymouth)

MASSACHUSETTS
WAREHAM QUADRANGLE



U.S.G.S.
FILE COPY
TOPOGRAPHIC DIVISION

U.S.G.S.
FILE COPY
TOPOGRAPHIC DIVISION

Topography by H.J. McMillen, M.G. Zeigler,
E.M. Titus, H.L. Harlow, and E.L. Haynes
Surveyed in 1934-1935
Culture revised in part, 1946
MARION 4 MI.
NEW BEDFORD 15 MI.

(Onset)
PARKWOOD BEACH 0.7 MI. SCALE 1:31680
BURGESS POINT 3.3 MI.
ONSET 0.6 MI.
POINT INDEPENDENCE 1.3 MI.

Polyconic projection, 1927 North American datum
5000 yard grid based on U.S. zone system, A
10000 foot grid based on Massachusetts
rectangular coordinate system
BUZZARDS BAY 0.7 MI.
SAGAMORE 6 MI.

APPROXIMATE MEAN
DECLINATION, 1935

CONTOUR INTERVAL 10 FEET
DATUM IS MEAN SEA LEVEL

ROAD CLASSIFICATION
Heavy duty ——— Light duty ———
Medium duty - - - - - Unimproved dirt - - - - -
U. S. Route State Route

WAREHAM, MASS.
USGS
Historical File
Topographic Division

FOR SALE BY U. S. GEOLOGICAL SURVEY, WASHINGTON 25, D. C.
A FOLDER DESCRIBING TOPOGRAPHIC MAPS AND SYMBOLS IS AVAILABLE ON REQUEST

JUL 24 1957

1120