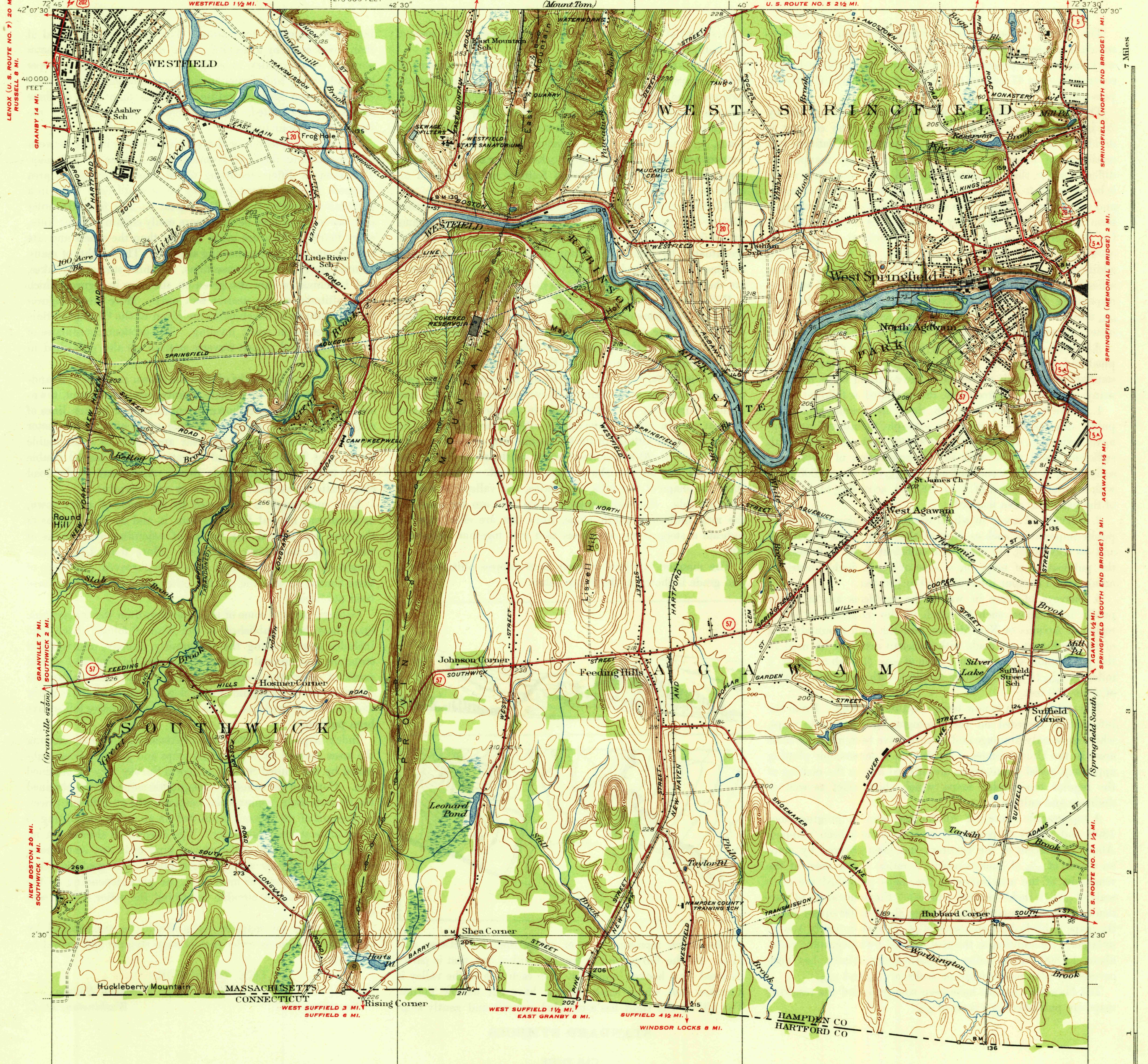


FILE COPY  
Inspection and Editing

UNITED STATES  
DEPARTMENT OF THE INTERIOR  
GEOLOGICAL SURVEY

STATE OF MASSACHUSETTS  
DEPARTMENT OF PUBLIC WORKS  
U.S. HIGHWAY NO. 202 4 MI. WILLIAM F. CALLAHAN, COMMISSIONER

ASHLEY POND 4 MI.  
HOLYOKE 6 MI.  
INGLESIDE 3 1/2 MI.  
MASSACHUSETTS-CONNECTICUT  
WEST SPRINGFIELD QUADRANGLE



THIS AREA IS SHOWN ON THE MAP OF SPRINGFIELD  
QUADRANGLE, SURVEYED IN 1886-1887, SCALE 1:62,500

Topography by H.A. Bean and H.B. Smith  
Surveyed in 1933

APPROXIMATE MEAN  
DECLINATION, 1933

Contour interval 10 feet  
Datum is mean sea level

USGS  
Historical File  
Topographic Division

Polyconic projection, 1927 North American datum  
5000 yard grid based on U.S. zone system, A  
10000 foot grid based on Massachusetts  
rectangular coordinate system

WEST SPRINGFIELD, MASS.-CONN.  
Edition of 1938  
2666:6050 / 74:

HARD IMPERVIOUSLY SURFACED ROADS  
OTHER MAIN TRAVELED ROADS  
1937  
UNITED STATES ROUTE NUMBER  
STATE ROUTE NUMBER

AUG 10 1938