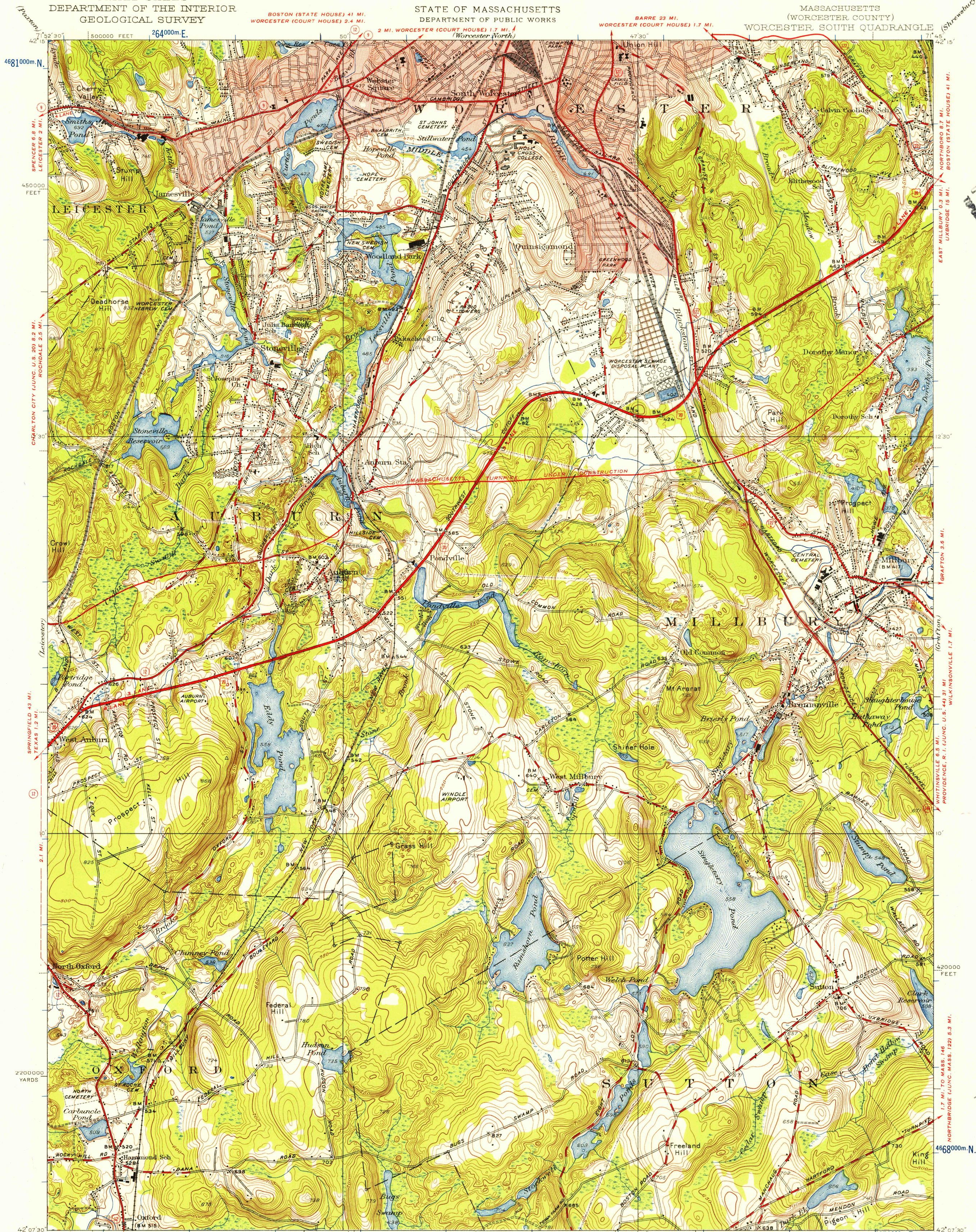


UNITED STATES
DEPARTMENT OF THE INTERIOR
GEOLOGICAL SURVEY

STATE OF MASSACHUSETTS
DEPARTMENT OF PUBLIC WORKS

MASSACHUSETTS
(WORCESTER COUNTY)
WORCESTER SOUTH QUADRANGLE



U.S.G.S.
FILE COPY
Topographic Division

U.S.G.S.
FILE COPY
Topographic Division

USGS
Historical File
Topographic Division

Topography by Crawford Dickey, David Landen,
E. M. Titus, G. D. Freeman, and E. L. Haynes
Culture and drainage in part compiled from aerial photographs
taken by Air Corps, U.S. Army
Surveyed in 1935, revised in 1948
WEBSTER 5.7 MI.
PUTNAM, CONN. (U.S. 44) 17 MI.

Red tint indicates areas in which
only landmark buildings are shown
All street railways shown on this
map are now abandoned

APPROXIMATE MEAN
DECLINATION, 1935

(Auburn)
SCALE 1:31680
1000 0 1000 2000 3000 4000 5000 6000 7000 FEET
1 KILOMETER
Contour interval 10 feet
Datum is mean sea level

ROAD CLASSIFICATION
Heavy-duty ——— Light-duty ———
Medium-duty - - - - - Unimproved dirt - - - - -
U.S. Route State Route

Interior-Geological Survey, Washington, D.C. 1966 530000 FEET 2720000 E.
Polyconic projection, 1927 North American datum
5000 yard grid based on U.S. zone system, A
10000 foot grid based on Massachusetts
rectangular coordinate system
1000 meter Universal Transverse Mercator Grid
ticks, zone 19, shown in blue
WORCESTER SOUTH, MASS.
N42075-W7145/75
1948

FOR SALE BY U. S. GEOLOGICAL SURVEY, WASHINGTON 25, D. C.
A FOLDER DESCRIBING TOPOGRAPHIC MAPS AND SYMBOLS IS AVAILABLE ON REQUEST