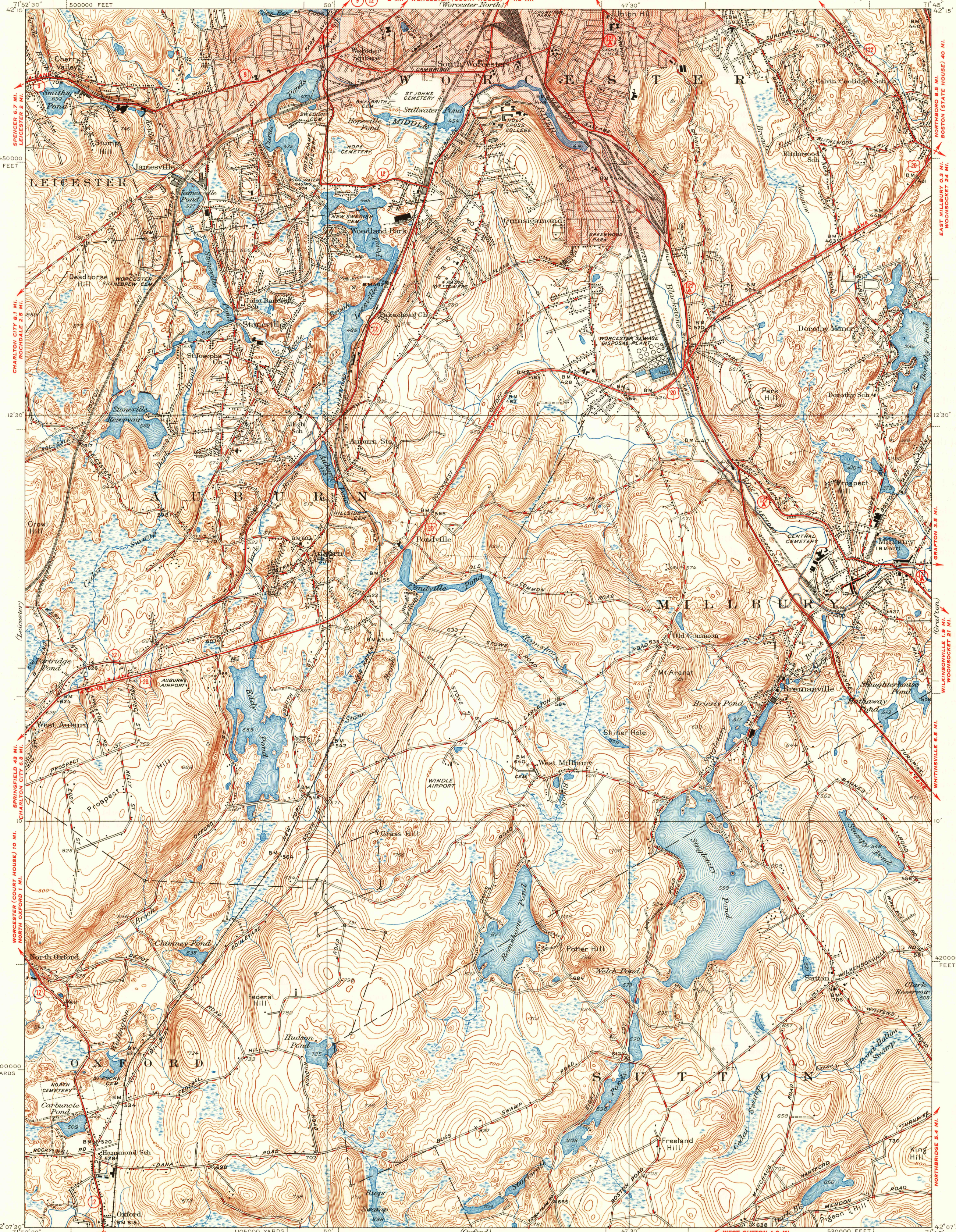


UNITED STATES  
DEPARTMENT OF THE INTERIOR  
GEOLOGICAL SURVEY

BOSTON (STATE HOUSE) 41 MI.  
WORCESTER (COURT HOUSE) 2.4 MI.

STATE OF MASSACHUSETTS  
DEPARTMENT OF PUBLIC WORKS  
WILLIAM H. BURACKER, COMMISSIONER  
2 MI. WORCESTER (COURT HOUSE) 1.5 MI.  
(Worcester North)

ATHOL 41 MI.  
WORCESTER (COURT HOUSE) 2.8 MI. MASSACHUSETTS  
(WORCESTER COUNTY)  
WORCESTER SOUTH QUADRANGLE



U.S.G.S.  
FILE COPY  
Inspection and Editing

U.S.G.S.  
FILE COPY  
Inspection and Editing

Topography by Crawford Dickey, David Landen,  
E.M. Titus, G.D. Freeman, and E.L. Haynes  
Culture and drainage in part compiled from aerial photographs  
taken by Air Corps, U.S. Army  
Surveyed in 1935, revised in 1948  
Red tint indicates areas in which  
only landmark buildings are shown  
All street railways shown on this  
map are now abandoned

Scale 31680  
1 Mile  
500 0 500 1000 1500 2000 2500 Yards  
1000 0 1000 2000 3000 4000 5000 6000 Feet  
1 Kilometer  
Contour interval 10 feet  
Datum is mean sea level

USCS  
Historical File  
Topographic Division  
ROAD CLASSIFICATION  
Hard-surface all weather roads DRY WEATHER ROADS  
Heavy-duty ———— Improved dirt ————  
Medium-duty ———— Unimproved dirt ————  
Loose-surface, graded, or narrow hard-surface ————  
U.S. Route State Route

WORCESTER SOUTH, MASS.  
Polyconic projection, 1927 North American datum  
5000 yard grid based on U.S. zone system, A  
10000 foot grid based on Massachusetts  
rectangular coordinate system  
Edition of 1939  
reprinted 1949  
with corrections  
N42075-W7145/75

U.S.G.S.  
FILE COPY  
Inspection and Editing