

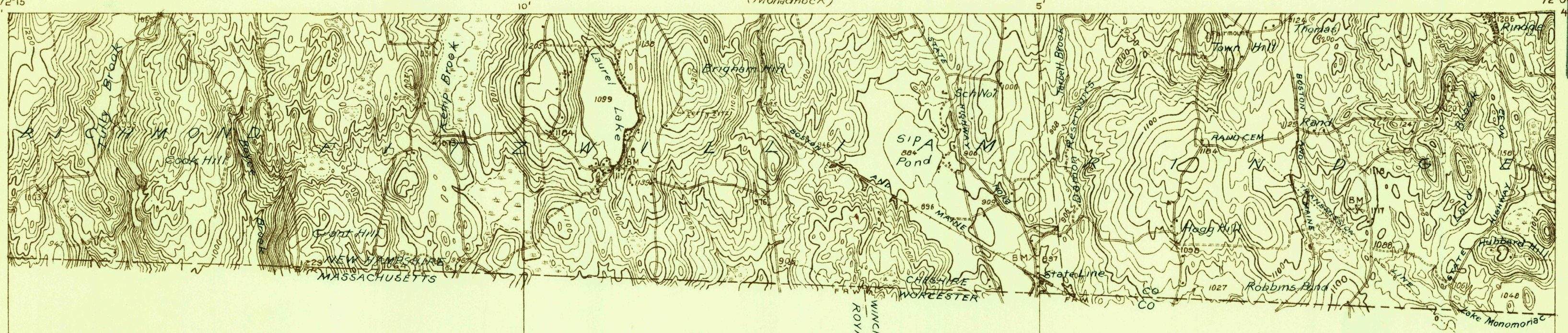
DEPARTMENT OF THE INTERIOR
U. S. GEOLOGICAL SURVEY

STATE OF NEW HAMPSHIRE
HIGHWAY DEPARTMENT
FREDERIC E. EVERETT, COMMISSIONER AND STATE ENGINEER

MASSACHUSETTS - NEW HAMPSHIRE
WINCHENDON QUADRANGLE
(CHESHIRE COUNTY)

Advance sheet.
Subject to correction.

U.S.G.S.
FILE COPY
Inspection and Editing

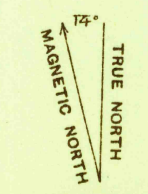


THIS AREA IS SHOWN ON THE MAP OF WINCHENDON
QUADRANGLE, SURVEYED IN 1887, SCALE 1:62,500

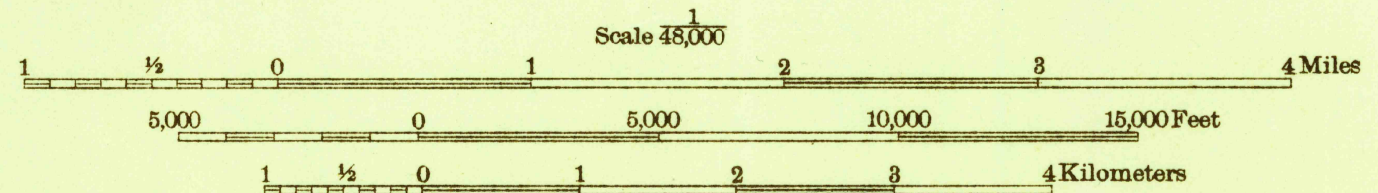
USGS
Historical File
Topographic Division

U.S.G.S.
FILE COPY
Inspection and Editing

Albert Pike, Division Engineer
Topography by R.M. Wilson
Culture and drainage in part compiled from aerial photographs
taken by Air Corps, U. S. Army
Control by U. S. Geological Survey and Massachusetts
Harbor and Land Commission
Surveyed in 1932



APPROXIMATE MEAN
DECLINATION, 1932



Contour interval 20 feet
Datum is mean sea level

Polyconic projection. North American datum

WINCHENDON - MASS-NH

N.H.