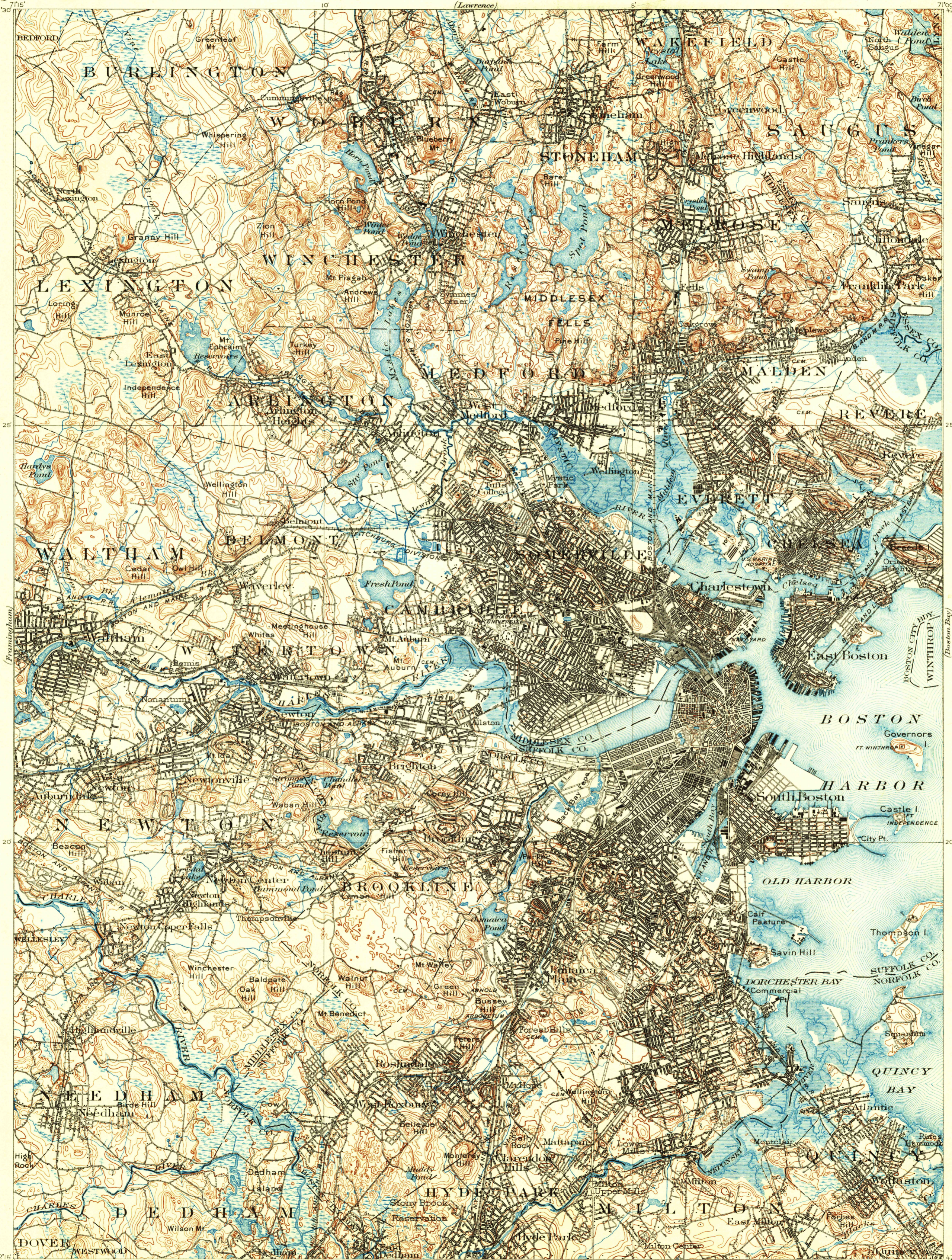


U. S. G. S.  
FILE COPY  
Inspection and Editing.



(Lowell)  
42°30'  
71°15'  
10'  
5'  
71°00'  
42°30'

15 Miles  
14  
13  
12  
11  
10  
9  
8  
7  
6  
5  
4  
3  
2  
1  
0  
1  
2  
3  
4  
5  
6  
7  
8  
9  
10  
11  
12  
13  
14  
15 Miles

H.M. Wilson, Geographer in charge.  
Triangulation by Mass. Topo. Survey Comm. and U.S. Coast and Geodetic Survey.  
Shore line topography by U.S. Coast and Geodetic Survey.  
Topography by Frank Sutton, J.H. Wheat, A.C. Roberts,  
J.H. Jennings, J.W. Thom, Robert Muldrow, E.B. Clark, A.H. Bumstead,  
T.G. Basinger and C.L. Hoopes and from various city, town,  
and park surveys.  
Surveyed in 1898-1900.

Scale 62500  
1 2 3 4 5 Miles  
1 2 3 4 5 Kilometers

Contour interval 20 feet.  
Datum is mean sea level.

U.S.G.S.  
Historical File  
Topographic Division  
Edition of July 1903, reprinted 1931  
Polyconic projection, North American datum  
MAY 8 - 1931 (4020)  
BOSTON, MASS.