

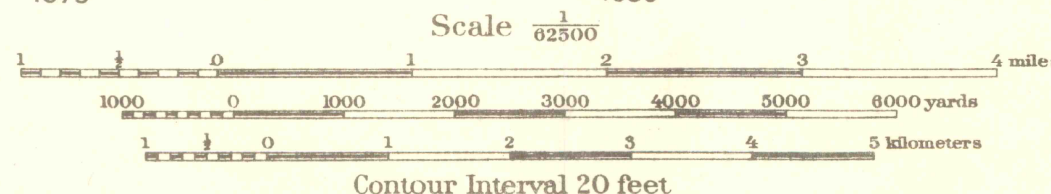
Reproduction by U.S. Lake Survey Office, Detroit, Mich.

Base map from U.S.G.S. engravings.

Corrections and additions by Dept. Engineer, Eastern Department.

Additional field work and compilation under the direction of Colonel H. Taylor, Corps of Engineers, U.S.A., Department Engineer, Eastern Department.

Additional field work by Troop E, U.S. Cavalry, Nov. 1915. 1st Lieut. J. F. Taubee, 2nd Cav., U.S.A.; 2nd Lieut. H. H. McGee, 2nd Cav., U.S.A., and 1st Lieut. C. D. Hartman, 3rd Inf., U.S.A., in charge of party.



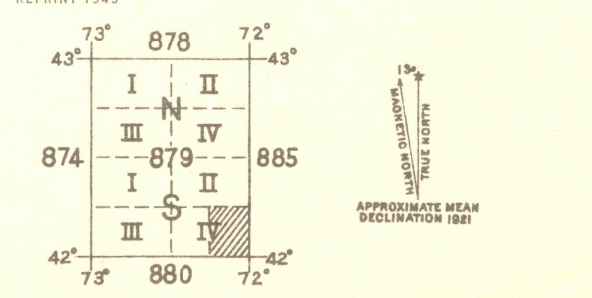
Contour Interval 20 feet

Datum is mean sea level

FIVE THOUSAND YARD GRID COMPUTED FROM "GRID SYSTEM FOR PROGRESSIVE MAPS IN THE U.S." ZONE A, U.S.C. & G.S. SPECIAL PUBLICATION NO. 59. (THE LAST THREE DIGITS OF THE GRID NUMBERS ARE OMITTED)

NOTE: OFFICERS USING THIS MAP WILL MARK HERSON CORRECTIONS AND ADDITIONS WHICH COME TO THEIR ATTENTION AND MAIL DIRECT TO "THE CHIEF OF ENGINEERS, WASHINGTON, D.C."

ARMY MAP SERVICE, U.S. ARMY, WASHINGTON, D.C. 100494
REPRINT 1943



BROOKFIELD

MASSACHUSETTS - 286