

MAPPED BY U.S.G.S. IN

CORPS OF ENGINEERS, U. S. ARMY  
TACTICAL MAP

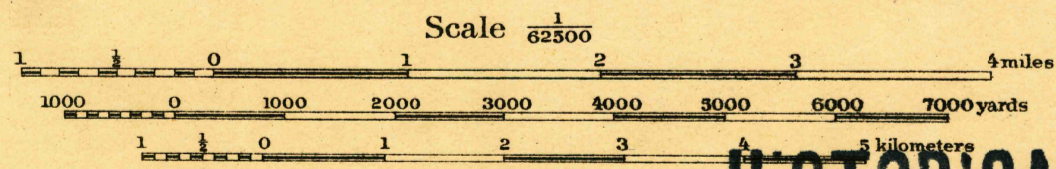
885-N-IV-W/2

MASSACHUSETTS - NEW HAMPSHIRE  
LOWELL QUADRANGLE  
GRID ZONE "A"



Base map from U. S. G. S. engravings.  
Surveyed in 1886.  
Additional field work and compilation under  
the direction of Col. W. M. Black, Corps of Engineers,  
U. S. A., Department Engineer, Eastern Department.  
Additional field work by Capt. V. L. Peterson,  
Corps of Engineers, U. S. A., Nov. 1915.

Reprint E. R. P. 1921

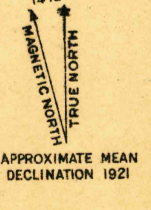
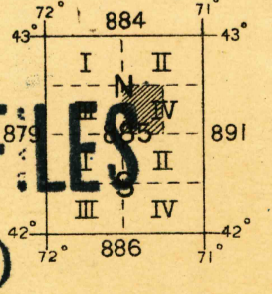


Contour Interval 20 feet  
Datum is mean sea level

FIVE THOUSAND YARD GRID COMPUTED FROM "GRID SYSTEM FOR PROGRESSIVE MAPS  
IN THE U. S." ZONE A, U. S. C. & G. S. SPECIAL PUBLICATION NO. 59.  
(THE LAST THREE DIGITS OF THE GRID NUMBERS ARE OMITTED)

NOTE: OFFICERS USING THIS MAP WILL MARK HEREON CORRECTIONS AND ADDITIONS WHICH COME  
TO THEIR ATTENTION AND MAIL DIRECT TO "THE CHIEF OF ENGINEERS, WASHINGTON, D. C."

**HISTORICAL FILES**  
(DO NOT REMOVE)



Central Map Reproduction Plant, Engineer School, Washington Barracks, D. C.  
May 1918

LOWELL