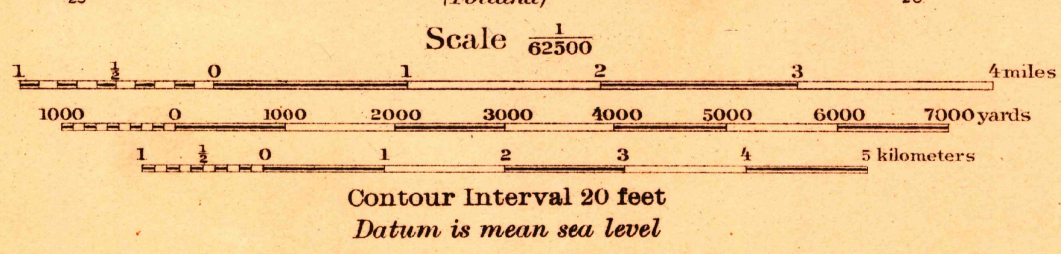


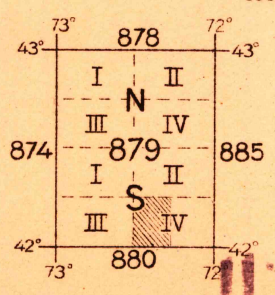


Field work and compilation under the direction of Col. H. Taylor, Corps of Engineers, U. S. A. Department Engineer, Eastern Department. Nov. 1915  
Field work under the immediate supervision of 2nd. Lieut. M. O. French, 3rd Infantry, U. S. A.  
Base map from U. S. G. S. engravings. Corrections and additions by Department Engineer, Eastern Department.



NOTE: OFFICERS USING THIS MAP WILL MARK HEREON CORRECTIONS AND ADDITIONS WHICH COME TO THEIR ATTENTION AND MAIL DIRECT TO 'THE CHIEF OF ENGINEERS, WASHINGTON, D. C.'

Engineer Reproduction Plant, U. S. Army, Washington Barracks, D. C. 1919



FILE COPY  
RETURN TO CENTRAL FILE

HISTORICAL FILE  
(DO NOT REMOVE)